

NasAircraft diagram

Class diagram in package 'NasAircraft'

NasAircraft



(from NasFlightData)

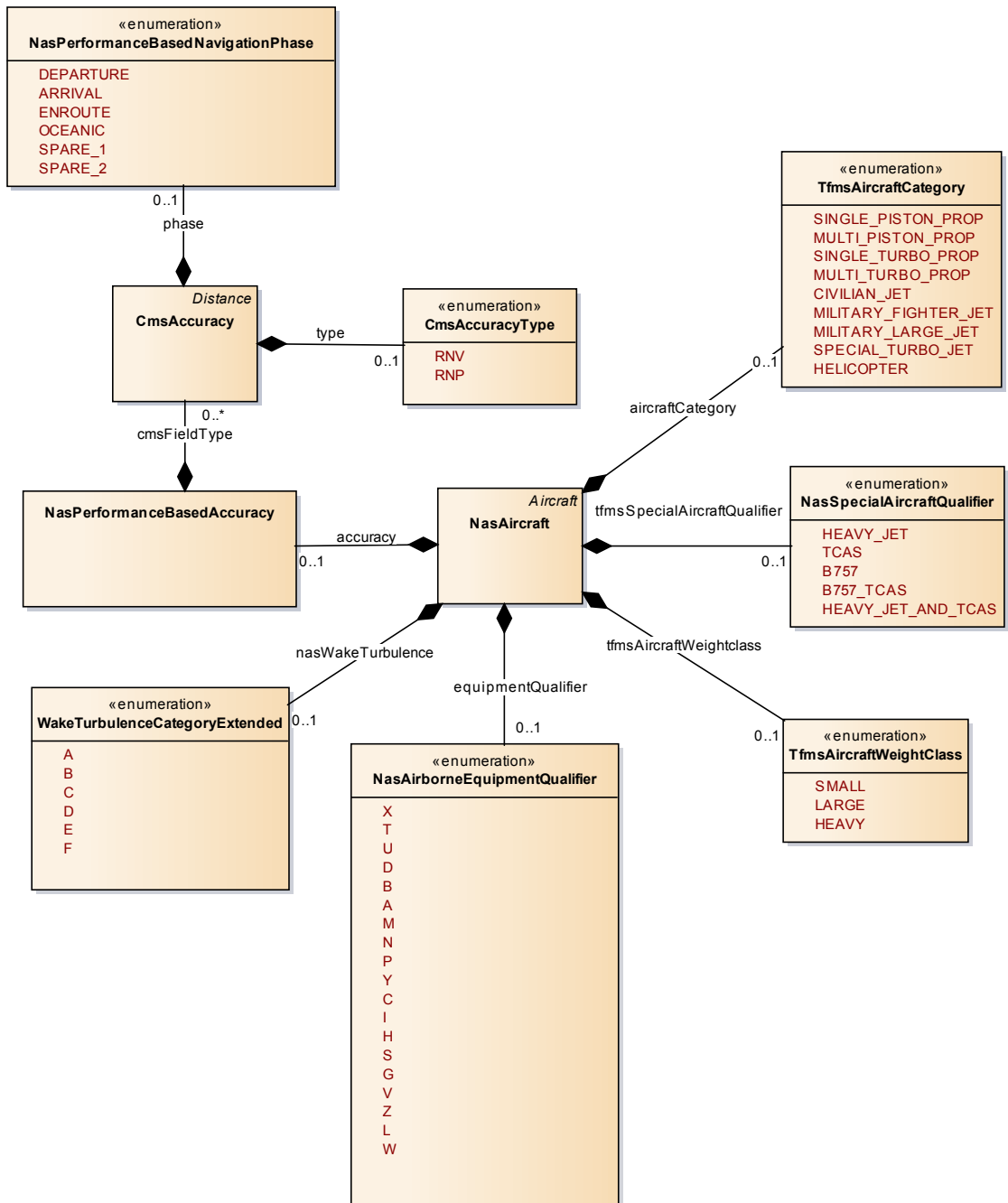


Figure 1: NasAircraft

NasAirspace diagram

Class diagram in package 'NasAirspace'

NasAirspace



(from NasFlightData)

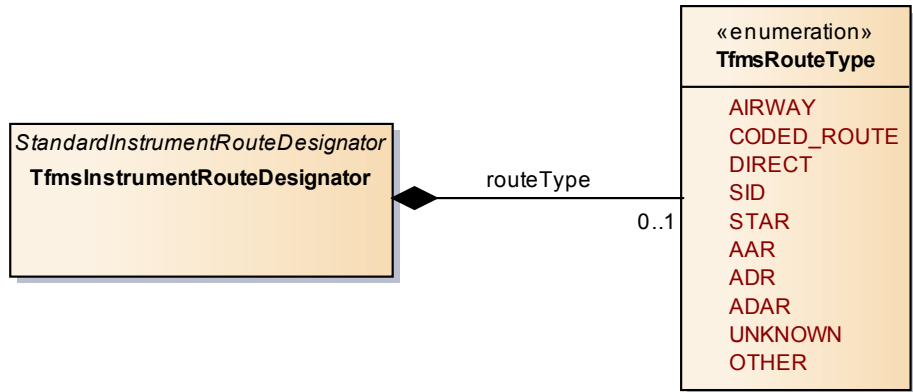


Figure 2: NasAirspace

NasAltitude diagram

Class diagram in package 'NasAltitude'

NasAltitude

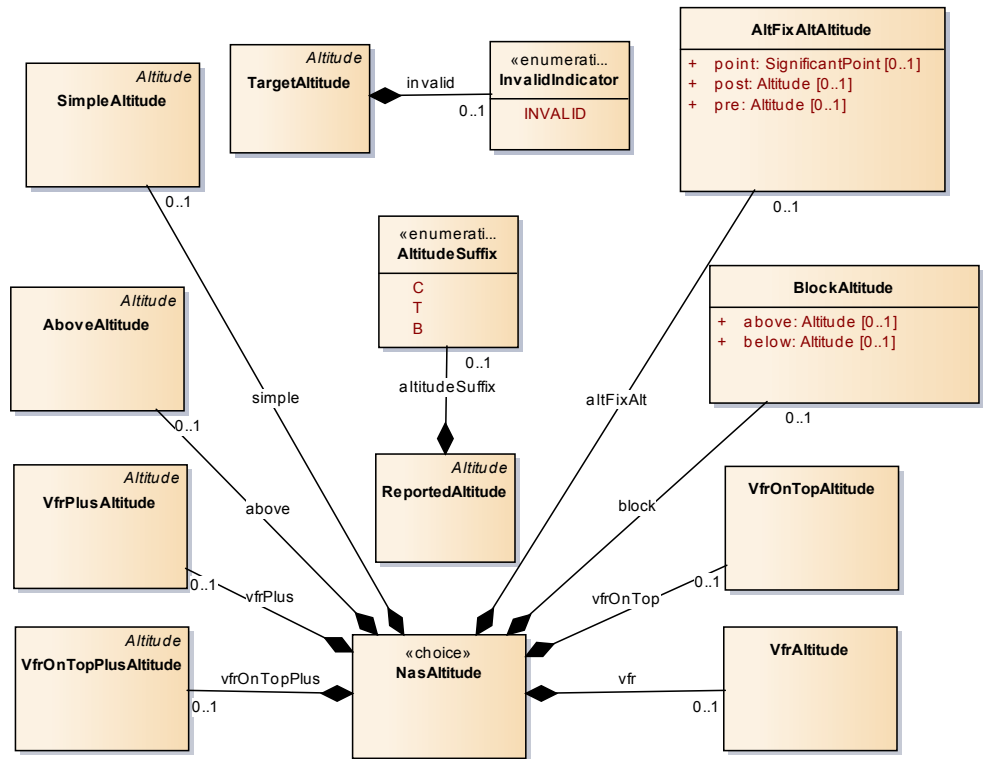


Figure 3: NasAltitude

NasArrival diagram

Class diagram in package 'NasArrival'

NasArrival

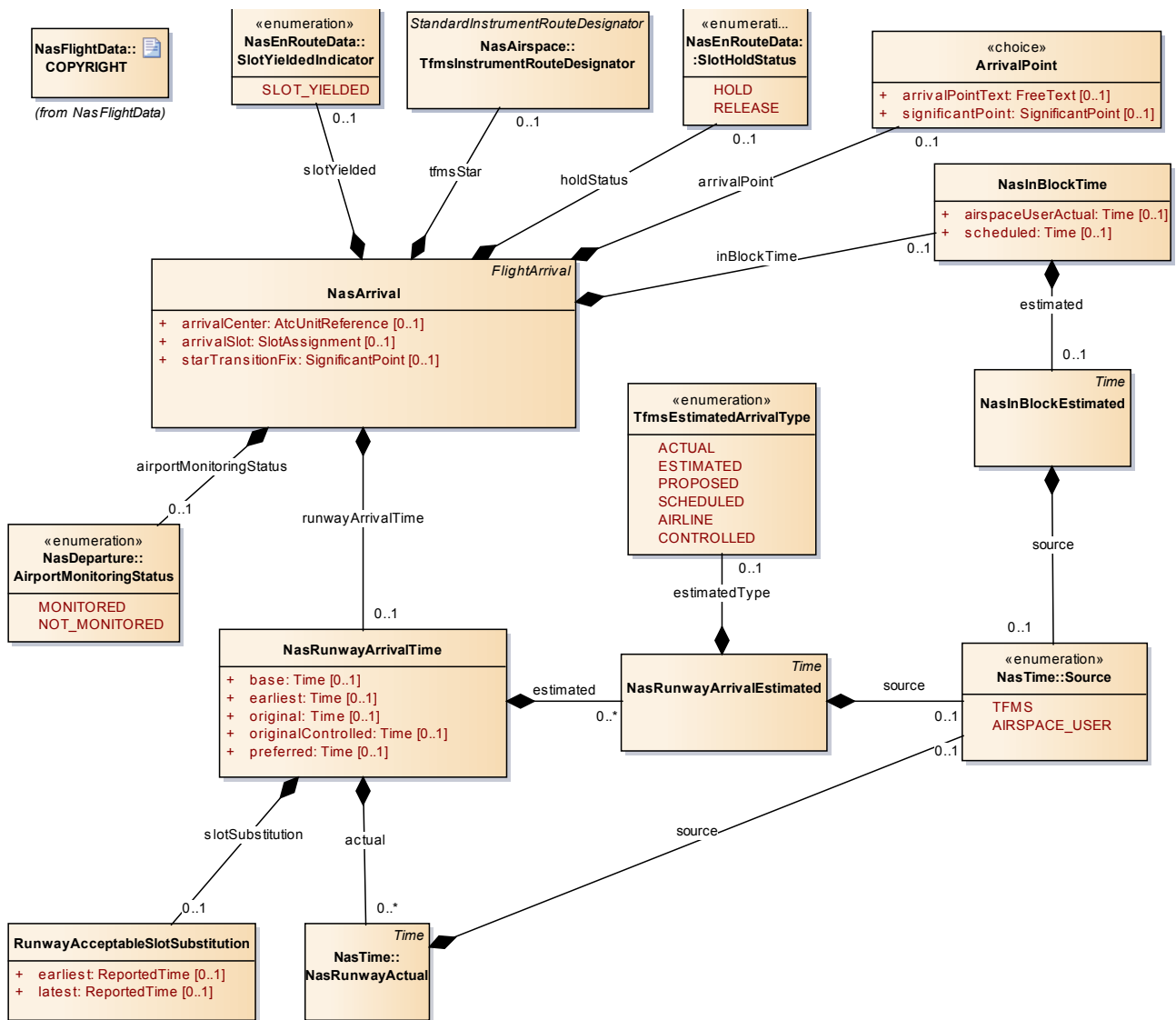


Figure 4: NasArrival

NasCoordination diagram

Class diagram in package 'NasCoordination'

NasCoordination

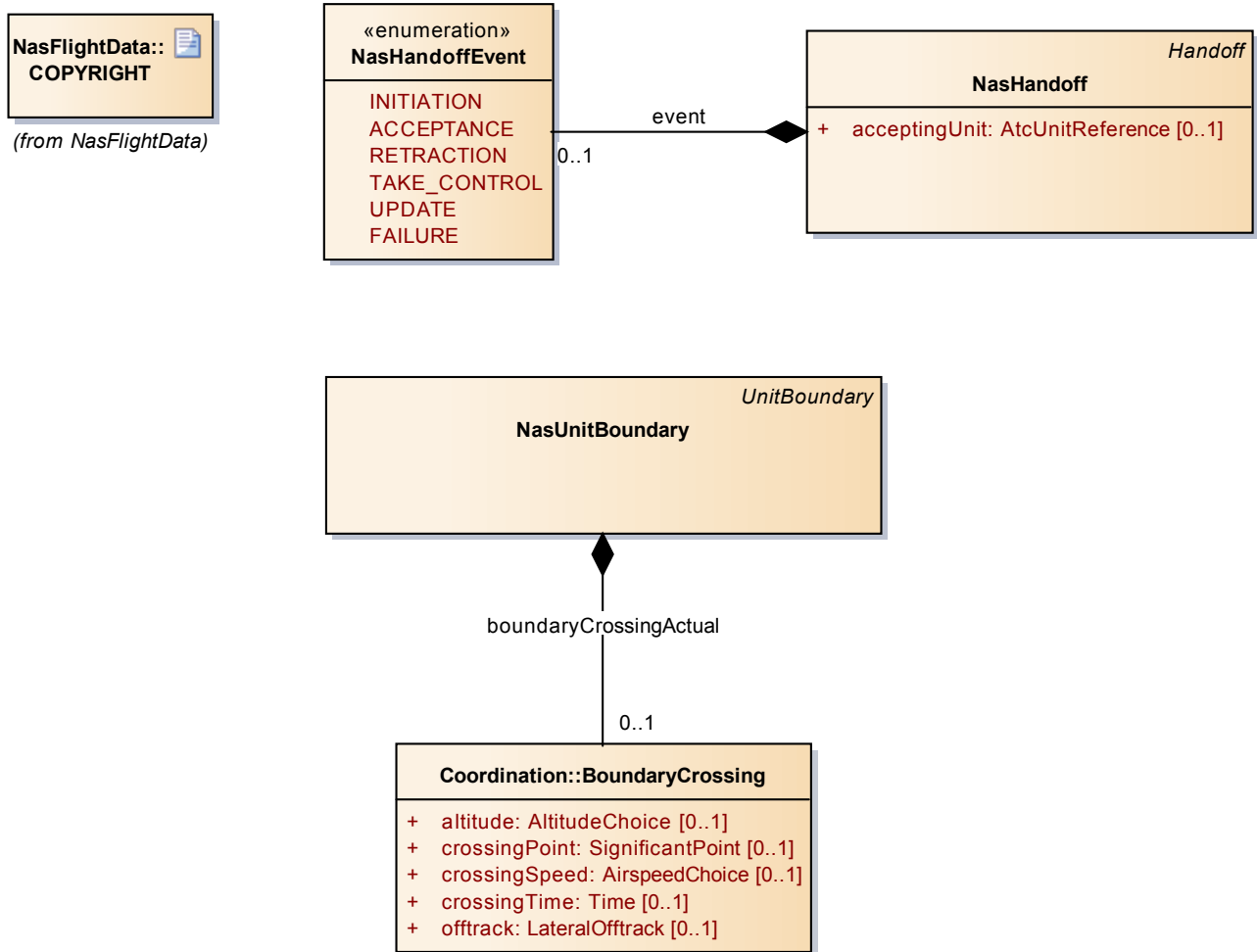


Figure 5: NasCoordination

NasDeparture diagram

Class diagram in package 'NasDeparture'

NasDeparture

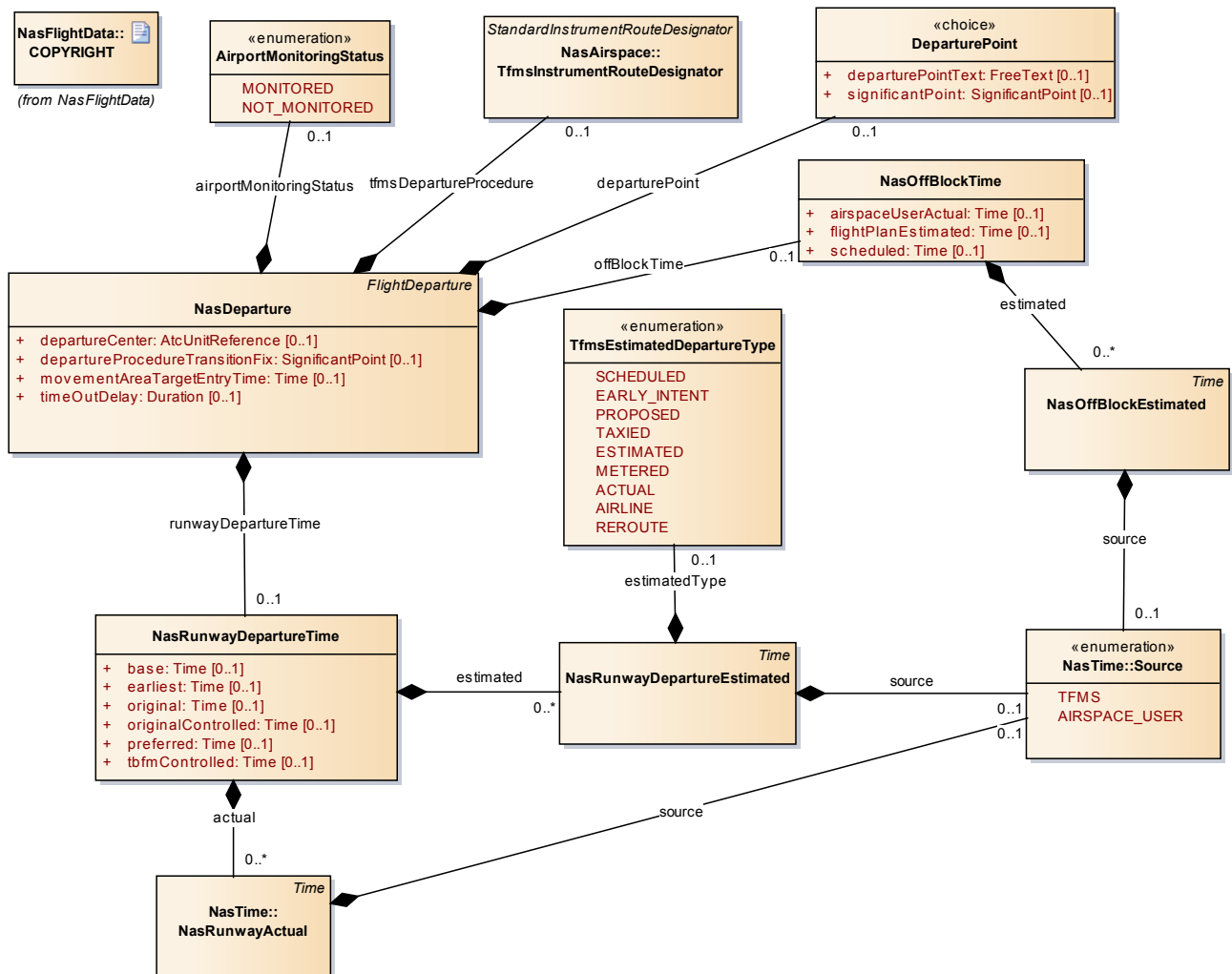


Figure 6: NasDeparture

NasEnRouteData diagram

Class diagram in package 'NasEnRouteData'

NasEnRouteData

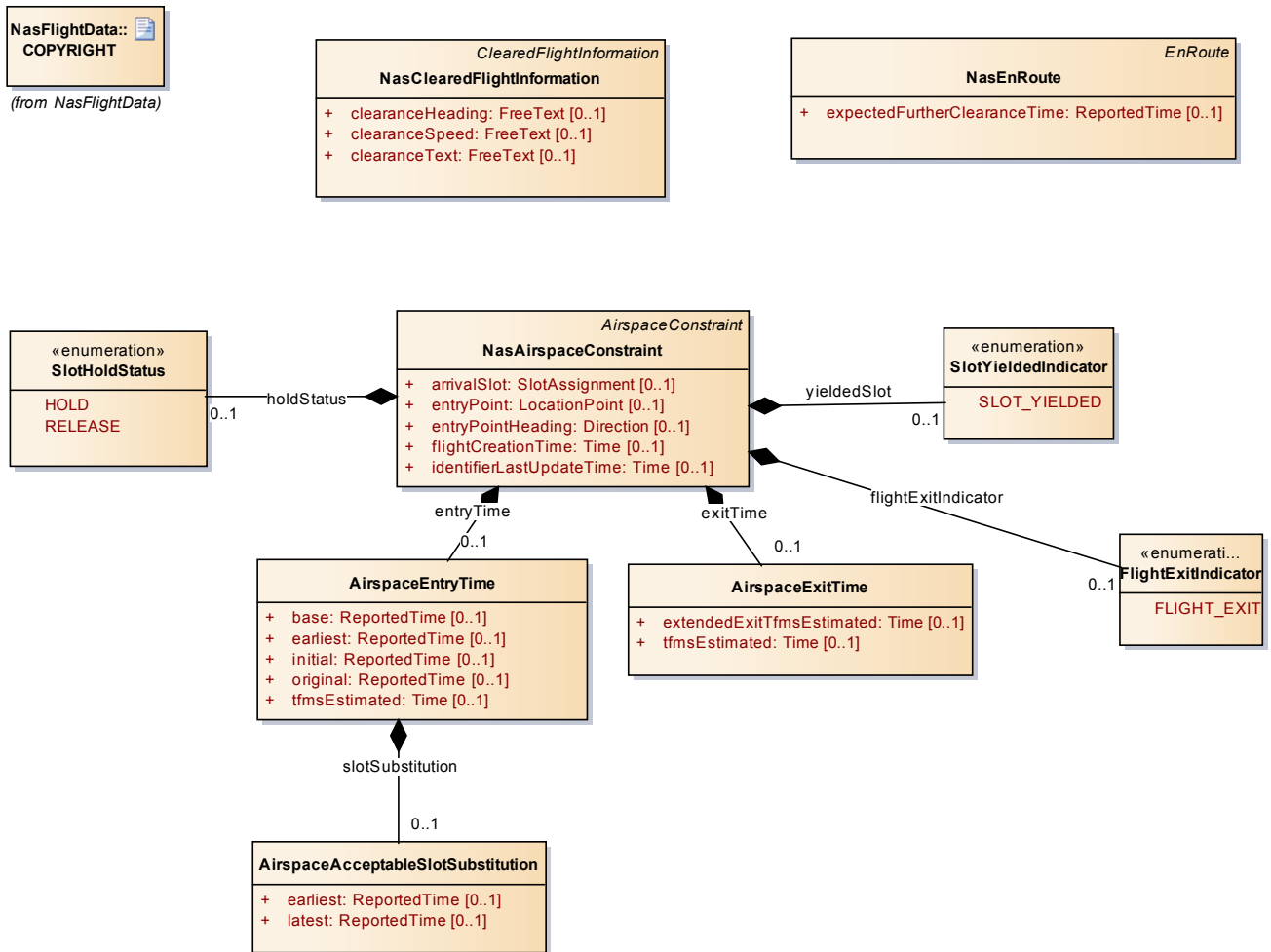


Figure 7: NasEnRouteData

NasFlightData diagram

Class diagram in package 'NasFlightData'

NasFlightData

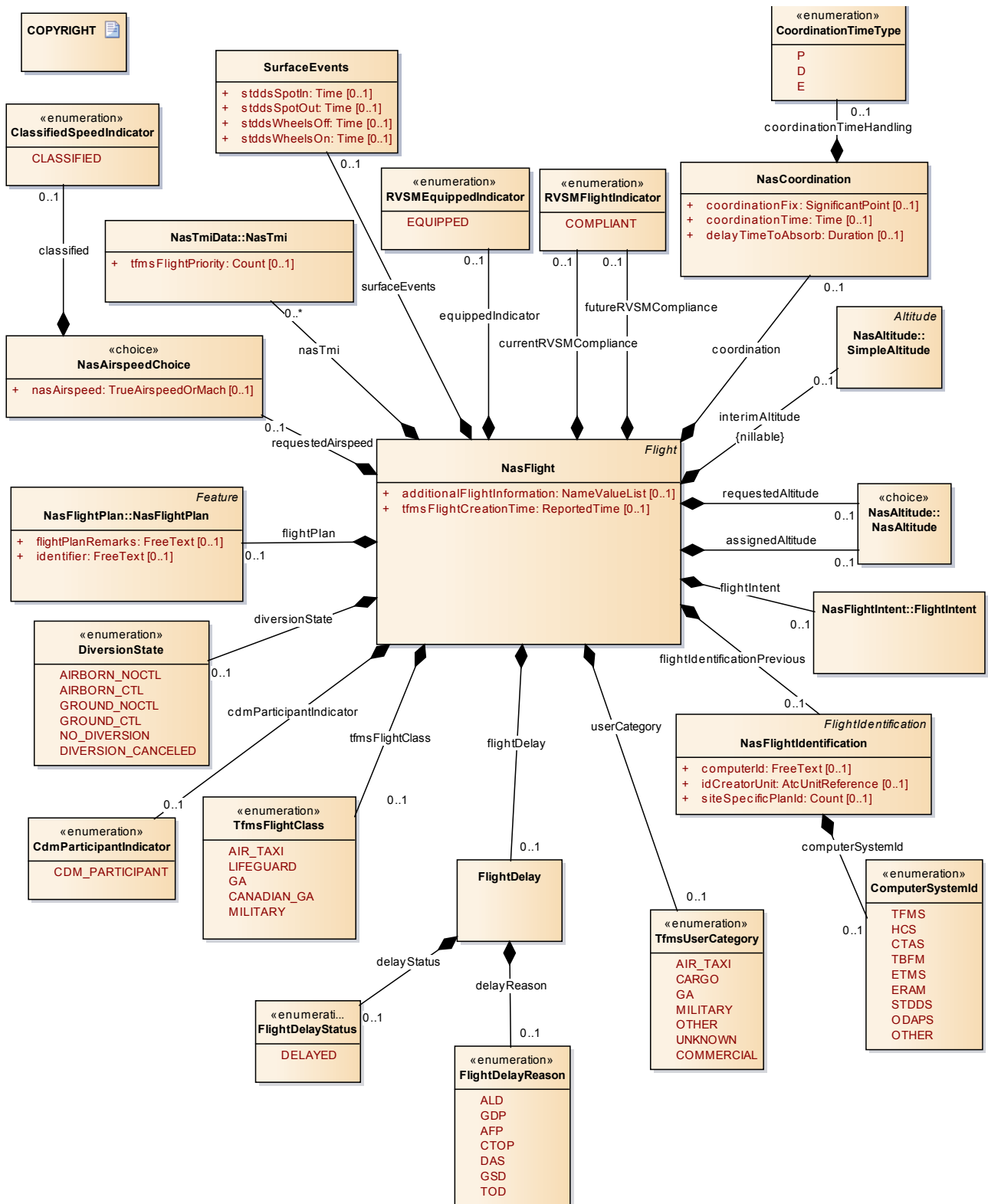


Figure 8: NasFlightData

NasFlightIntent diagram

Class diagram in package 'NasFlightIntent'

NasFlightIntent



(from NasFlightData)

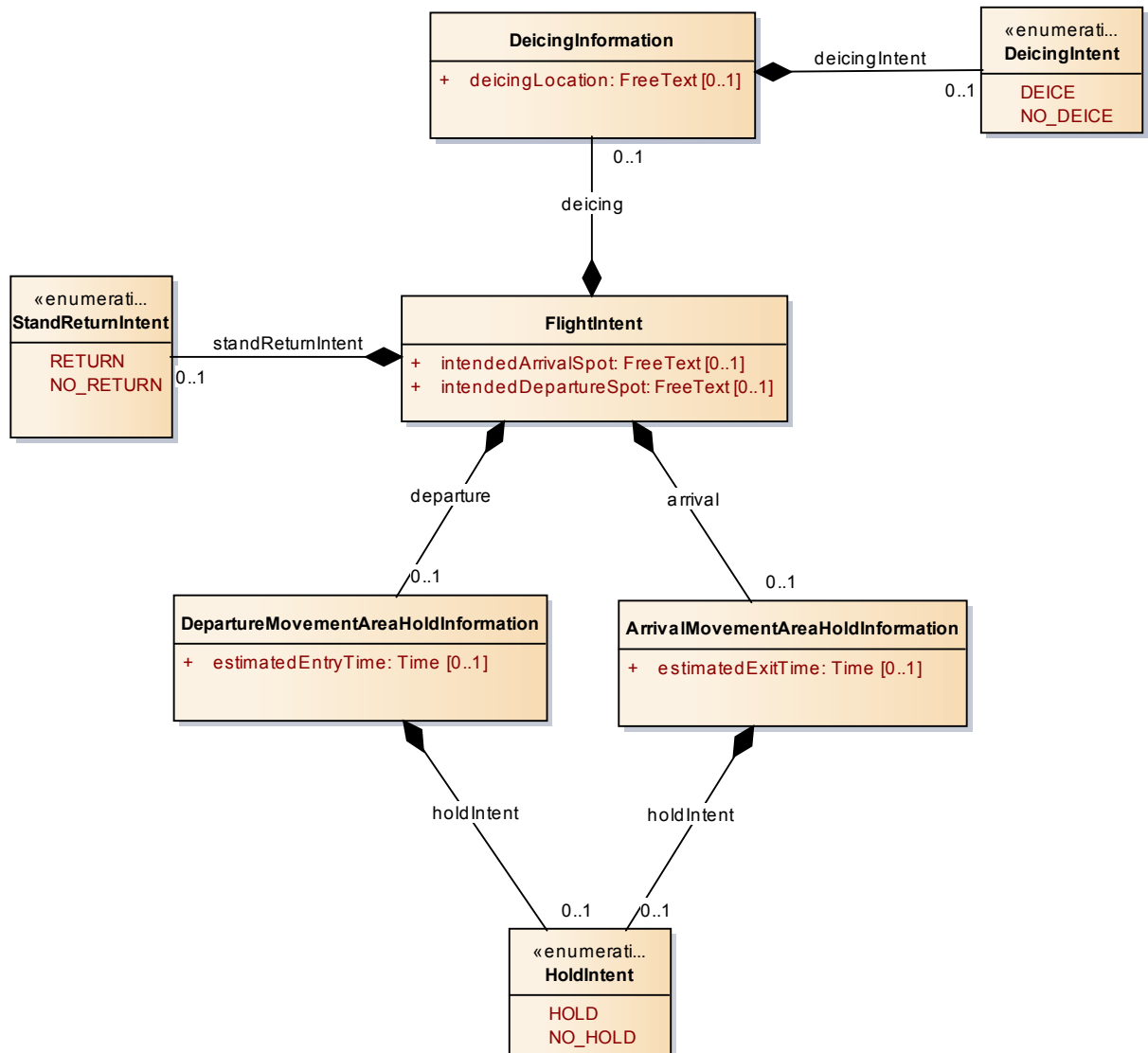


Figure 9: NasFlightIntent

NasFlightPlan diagram

Class diagram in package 'NasFlightPlan'

NasFlightPlan



(from NasFlightData)

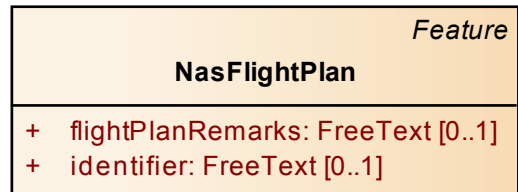


Figure 10: NasFlightPlan

NasMessage diagram

Class diagram in package 'NasMessage'

NasMessage

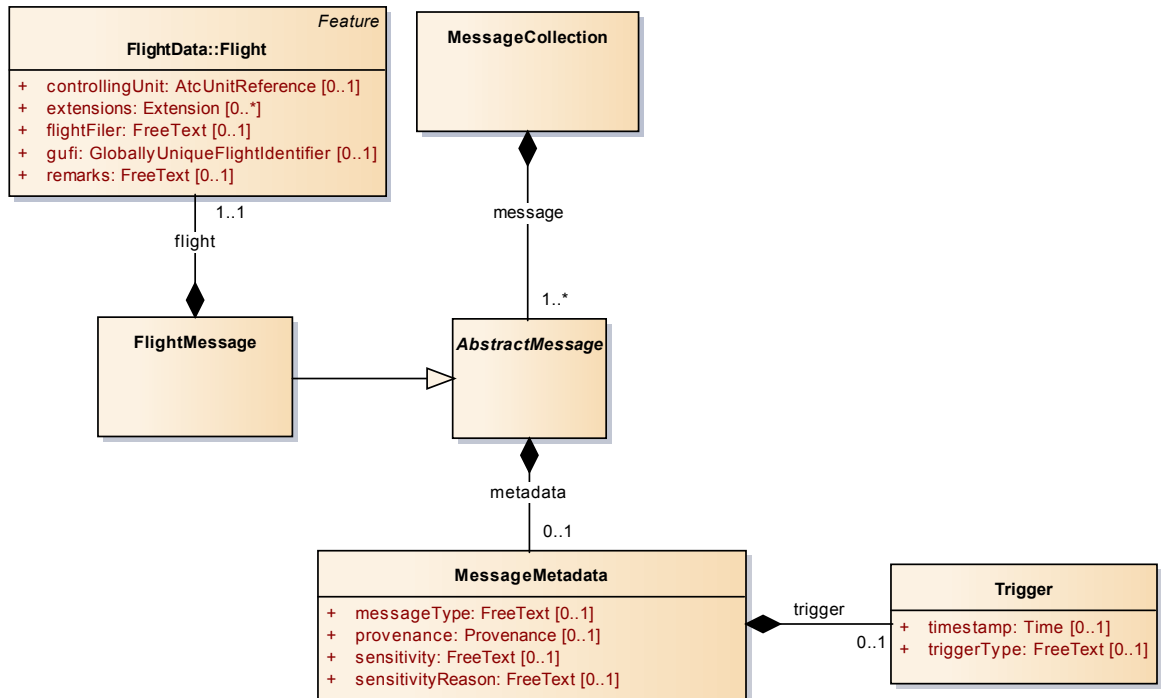


Figure 11: NasMessage

NasPosition diagram

Class diagram in package 'NasPosition'

NasPosition

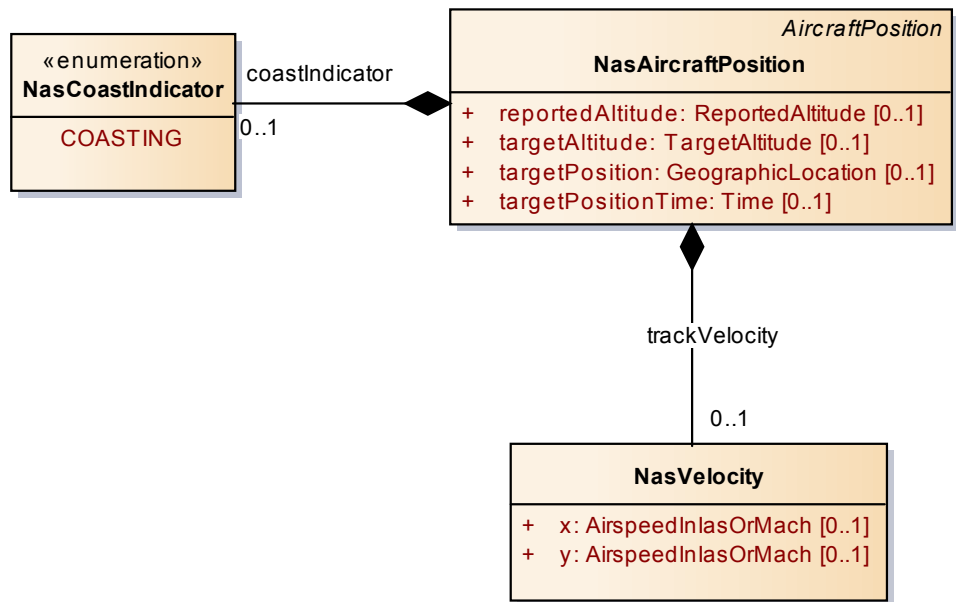


Figure 12: NasPosition

NasStatus diagram

Class diagram in package 'NasStatus'

NasStatus

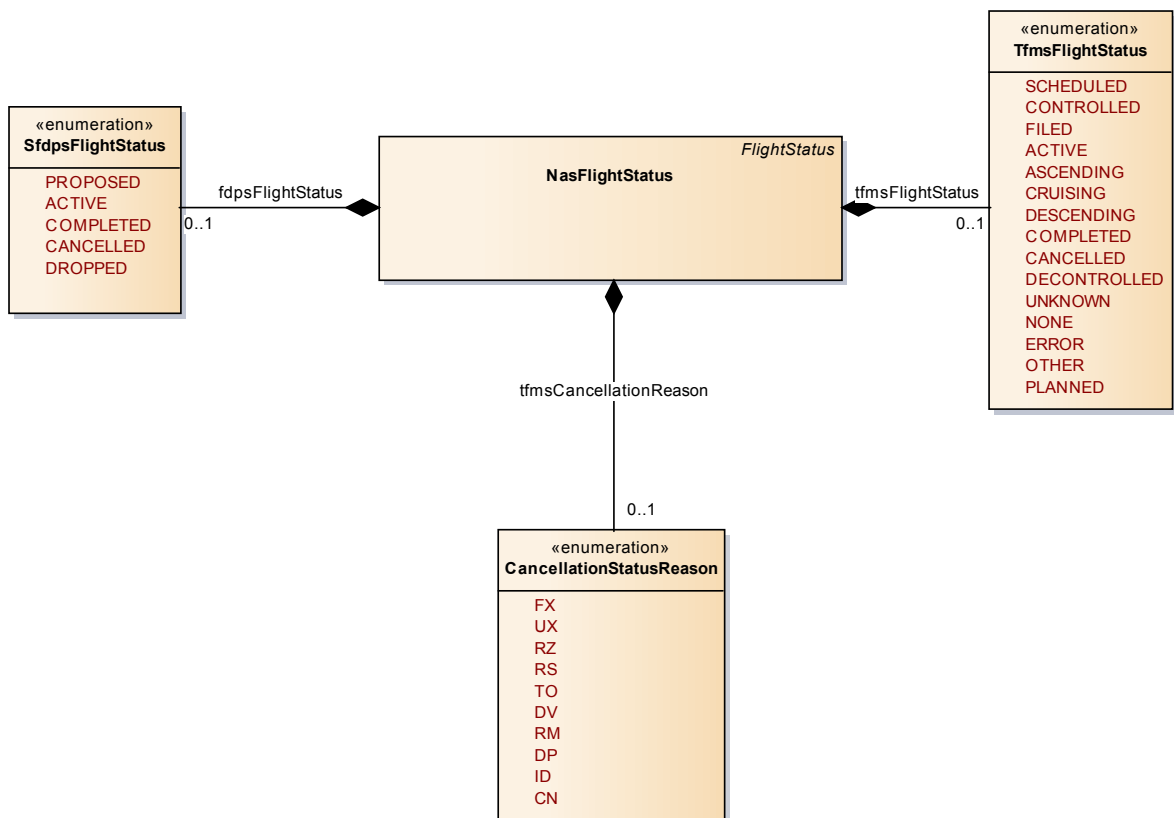


Figure 14: NasStatus

NasTime diagram

Class diagram in package 'NasTime'

NasTime

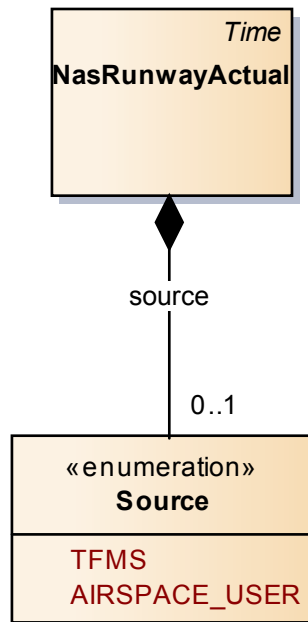


Figure 15: NasTime

NasTmiCompliance diagram

Class diagram in package 'NasTmiCompliance'

NasTmiCompliance

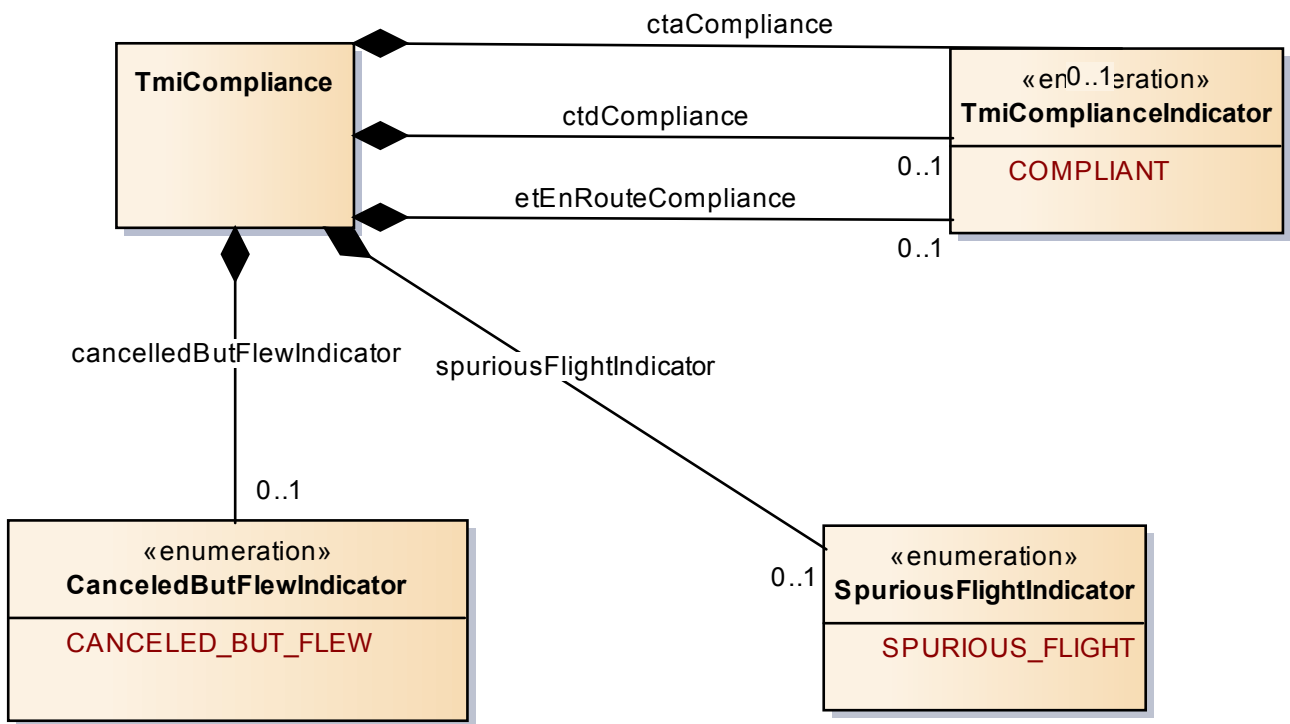


Figure 16: NasTmiCompliance

NasTmiData diagram

Class diagram in package 'NasTmiData'

NasTmiData

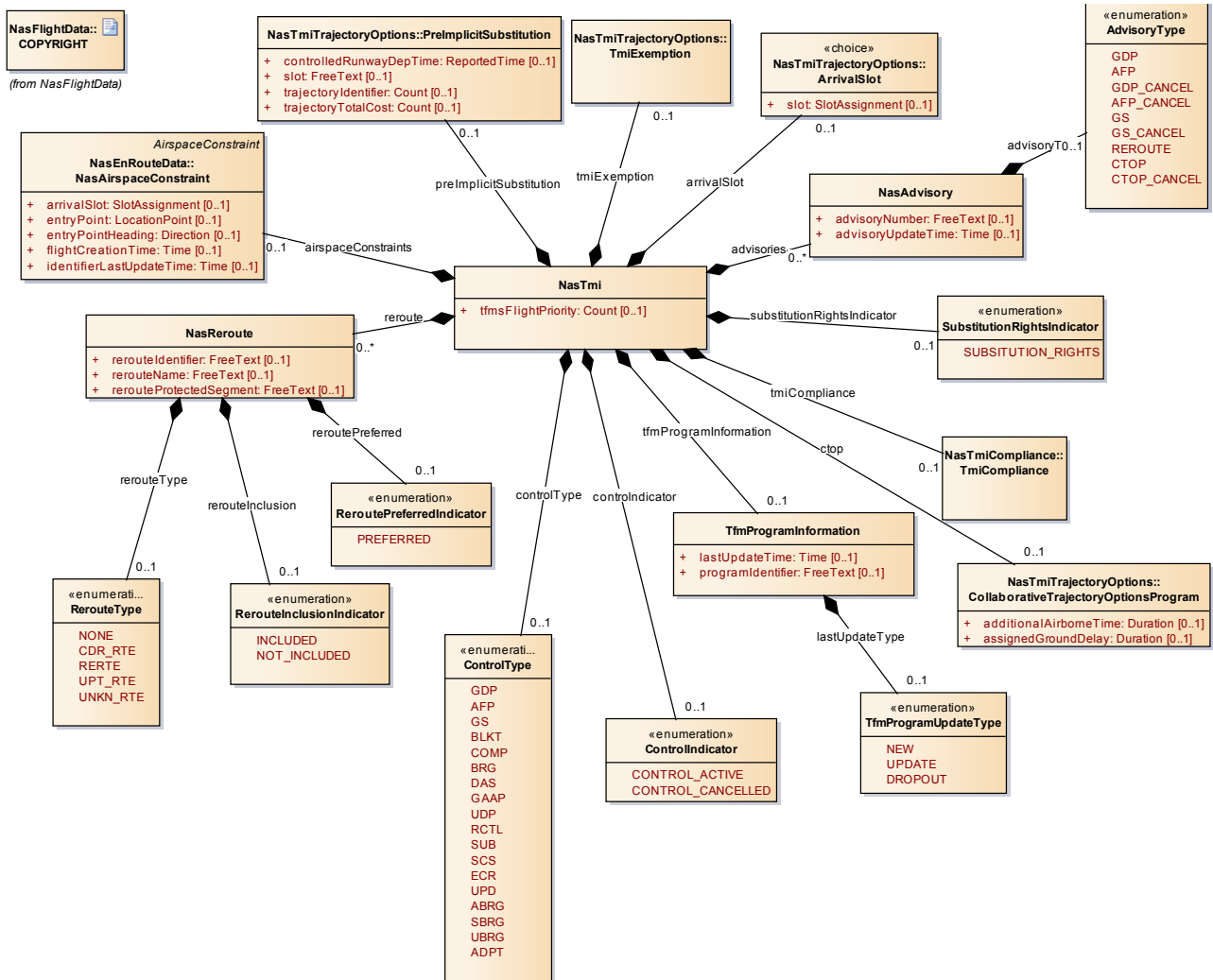


Figure 17: NasTmiData

NasTrajectoryOptions diagram

Class diagram in package 'NasTmiTrajectoryOptions'

NasTrajectoryOptions

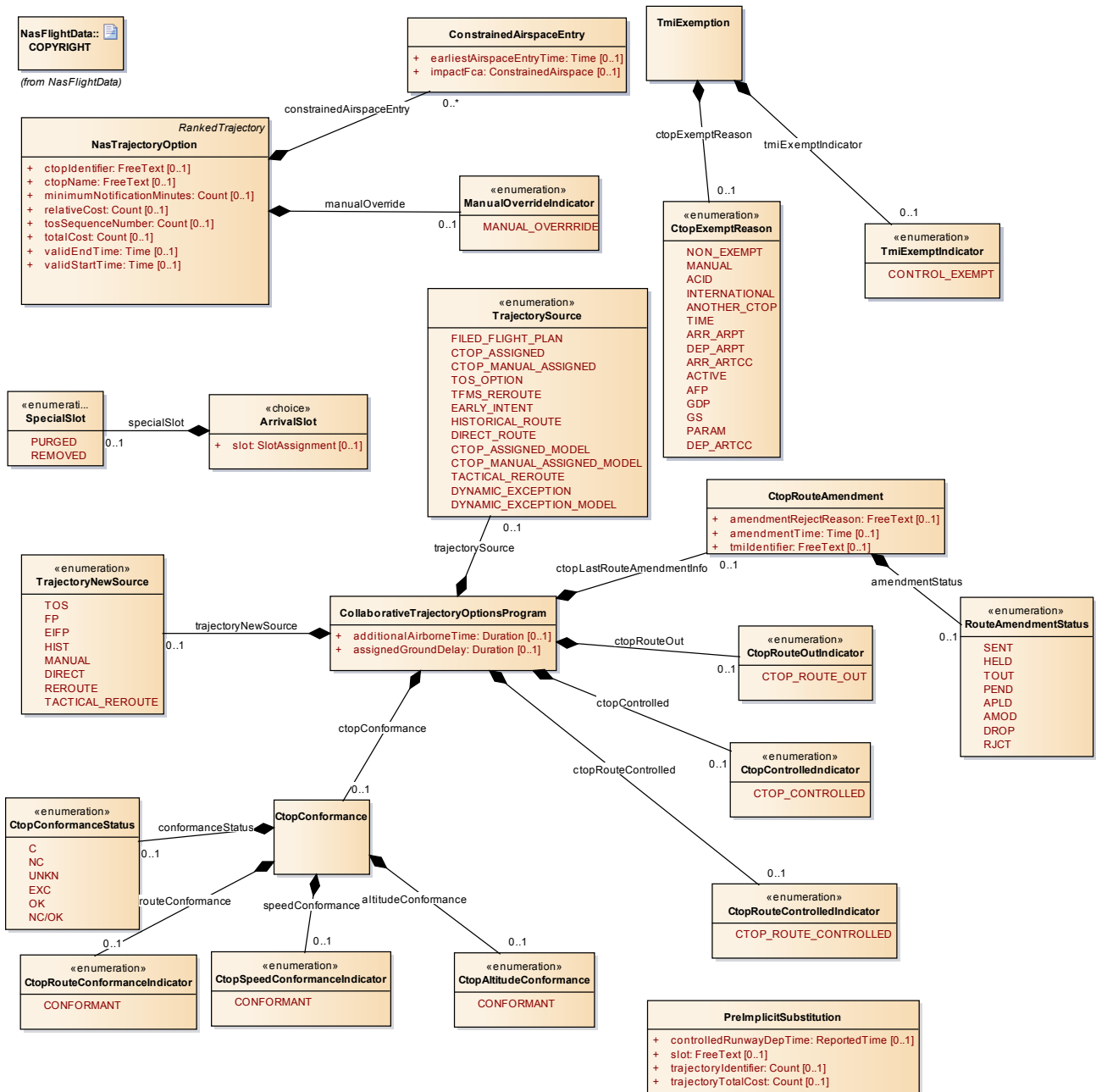


Figure 18: NasTrajectoryOptions

