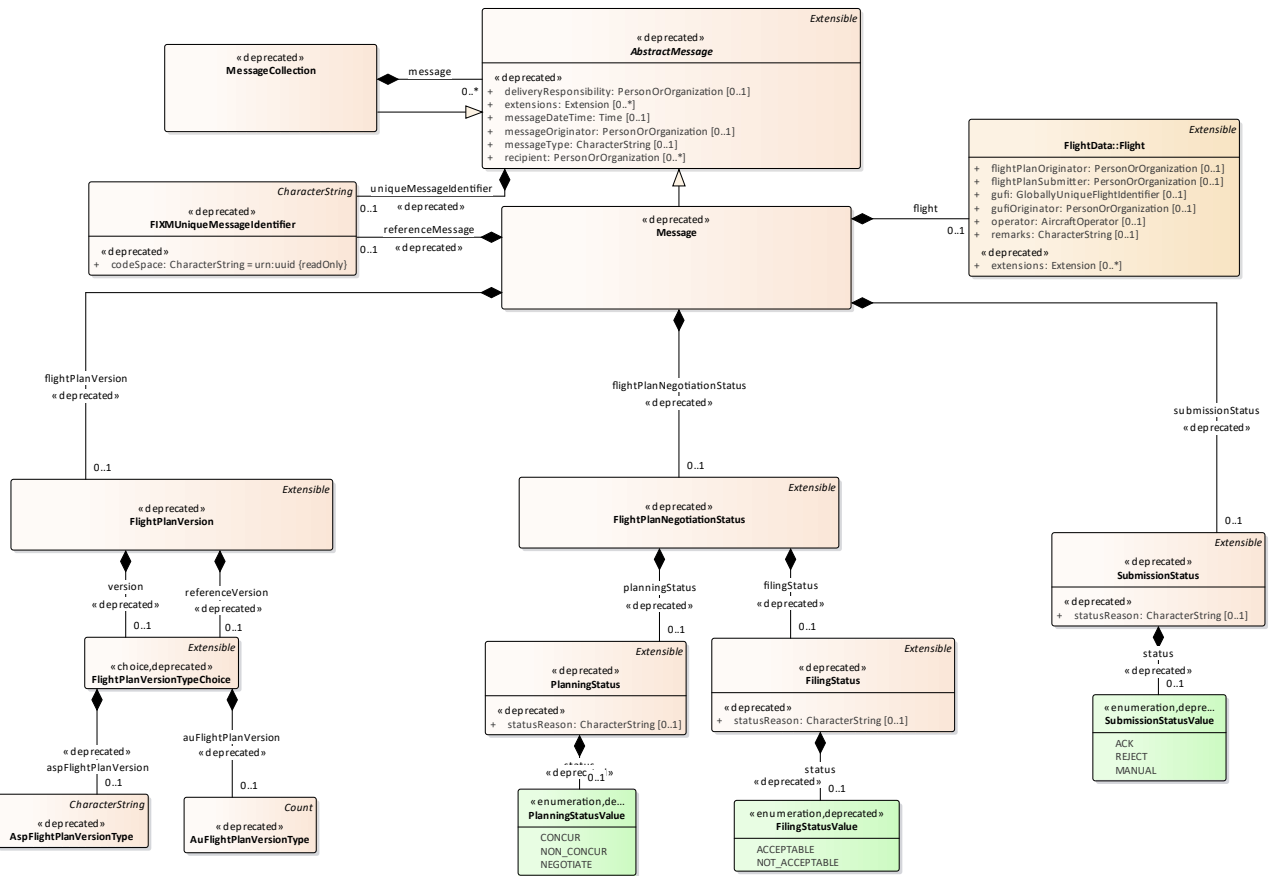


# Messaging diagram

Class diagram in package 'Messaging'

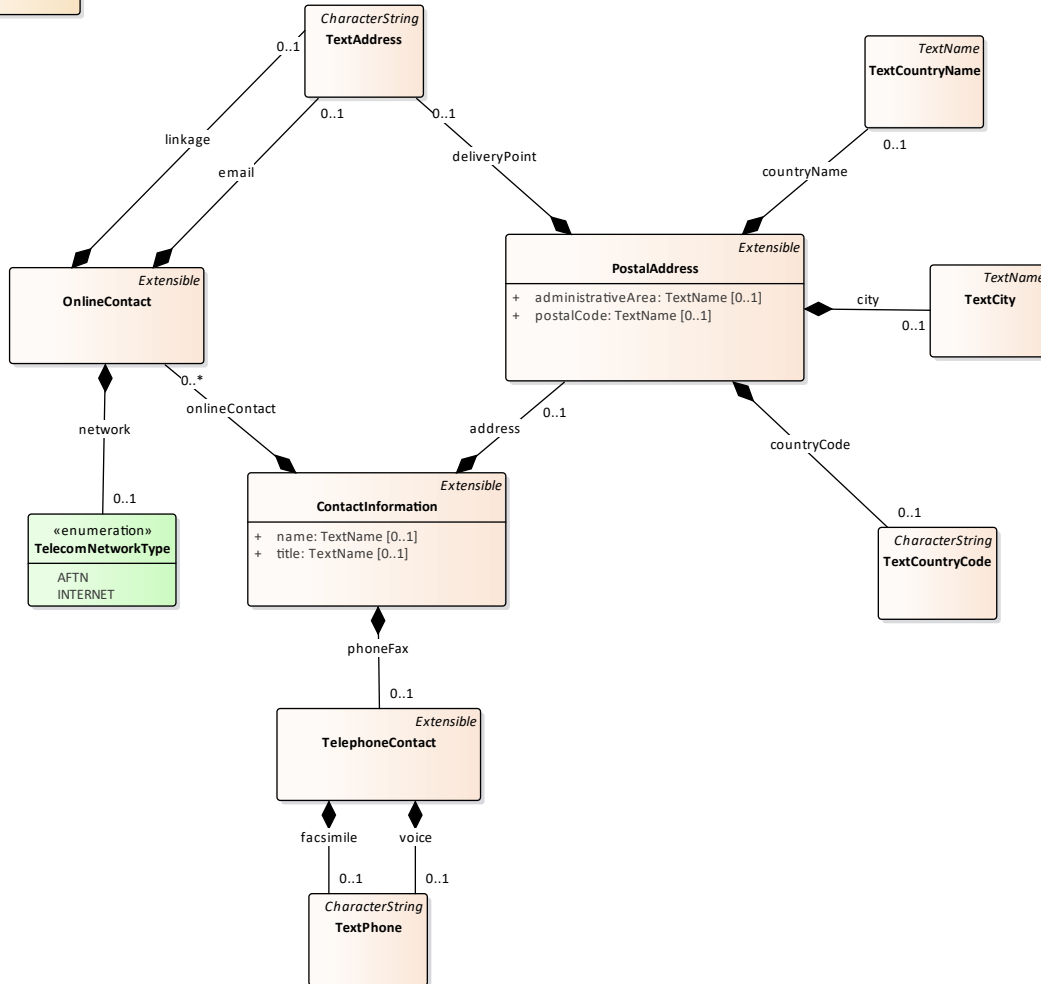
Messaging



# Address diagram

Class diagram in package 'Address'

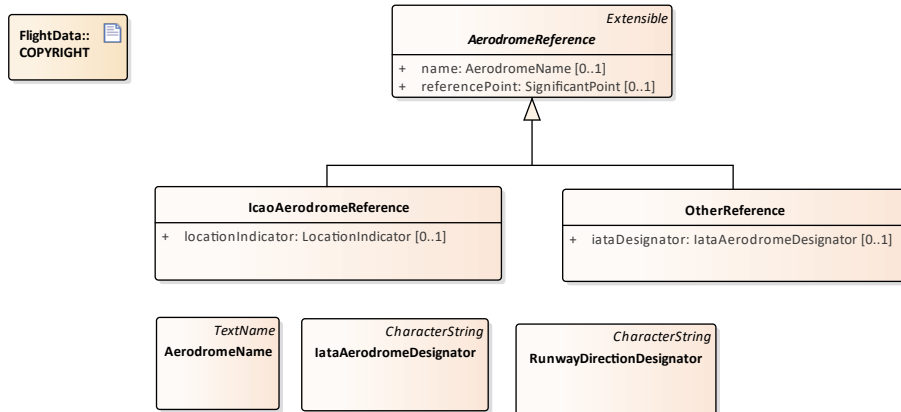
Address



## Aerodrome diagram

Class diagram in package 'Aerodrome'

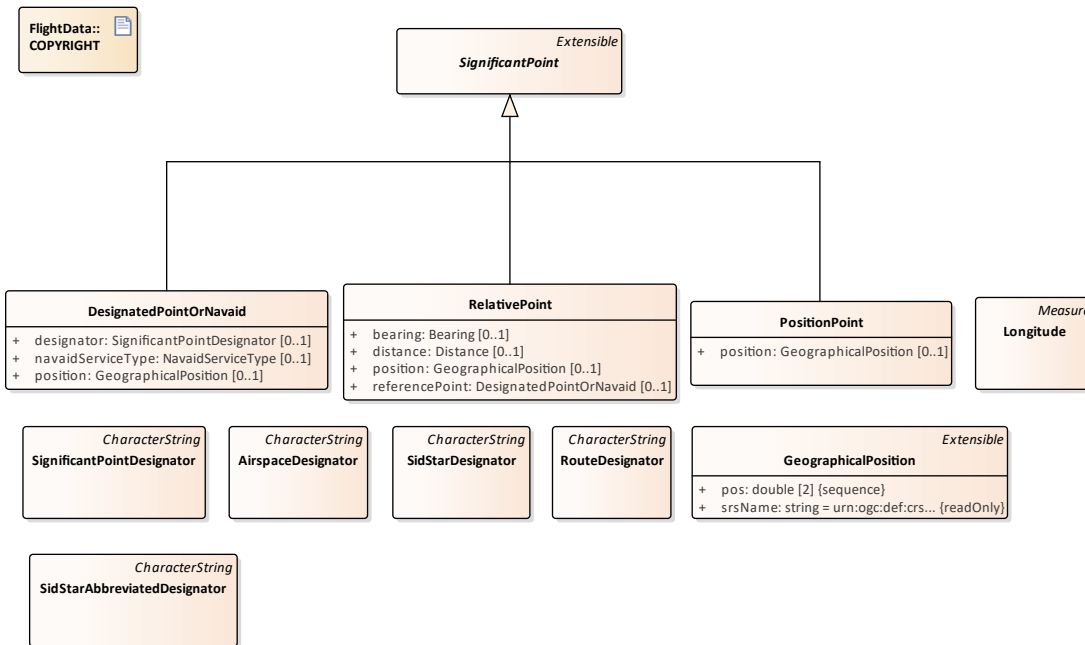
Aerodrome



## Airspace diagram

Class diagram in package 'Airspace'

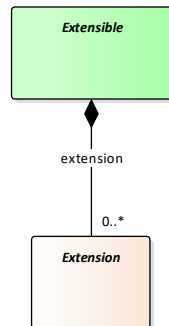
Airspace



## Extension diagram

Class diagram in package 'Extension'

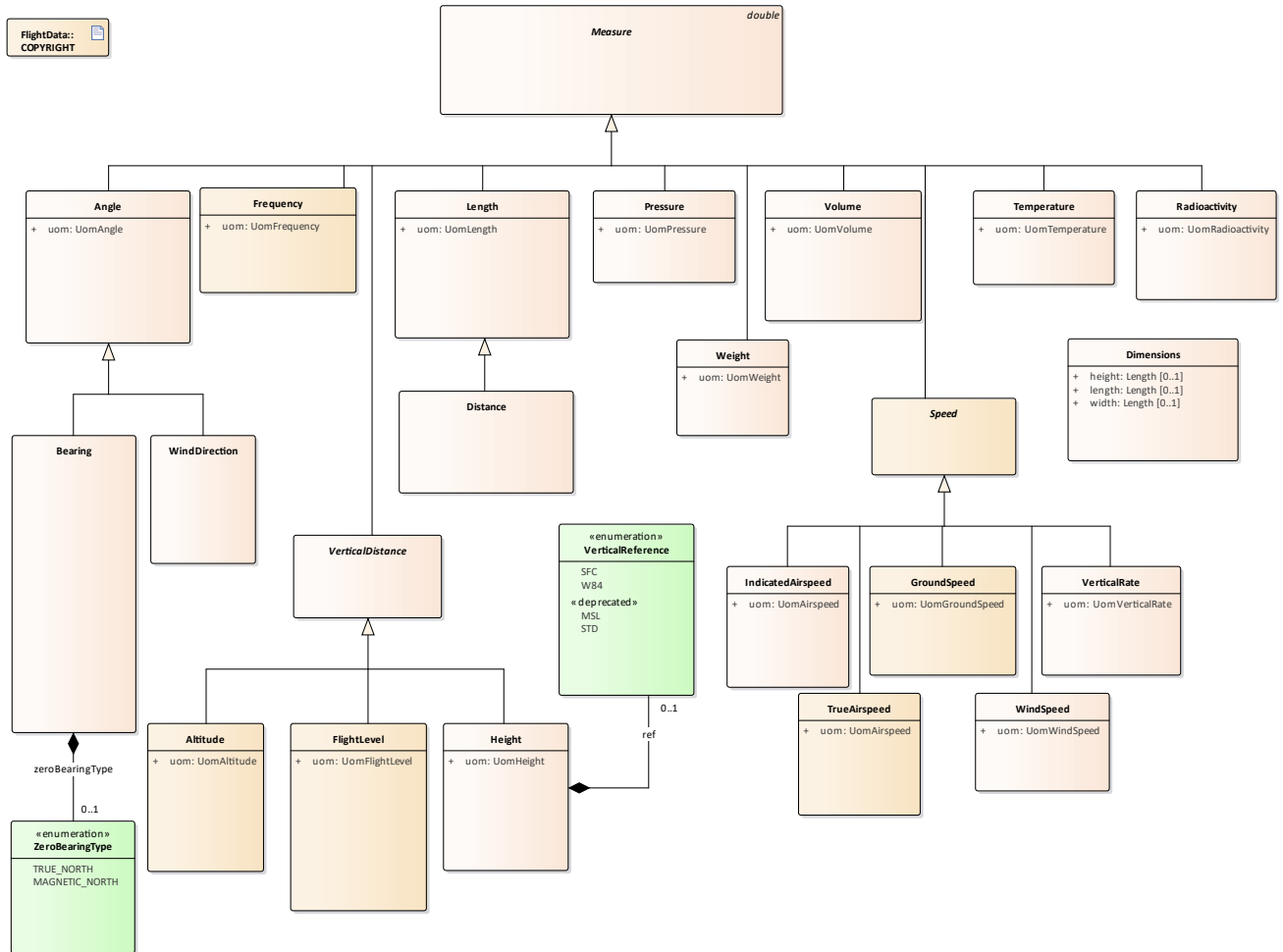
Extension



# Measures diagram

Class diagram in package 'Measures'

Measures



## UnitsOfMeasure diagram

Class diagram in package 'UnitsOfMeasure'

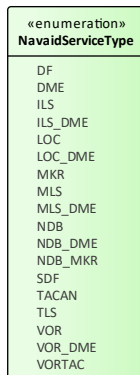
UnitsOfMeasure



## Navaid diagram

Class diagram in package 'Navaid'

Navaid

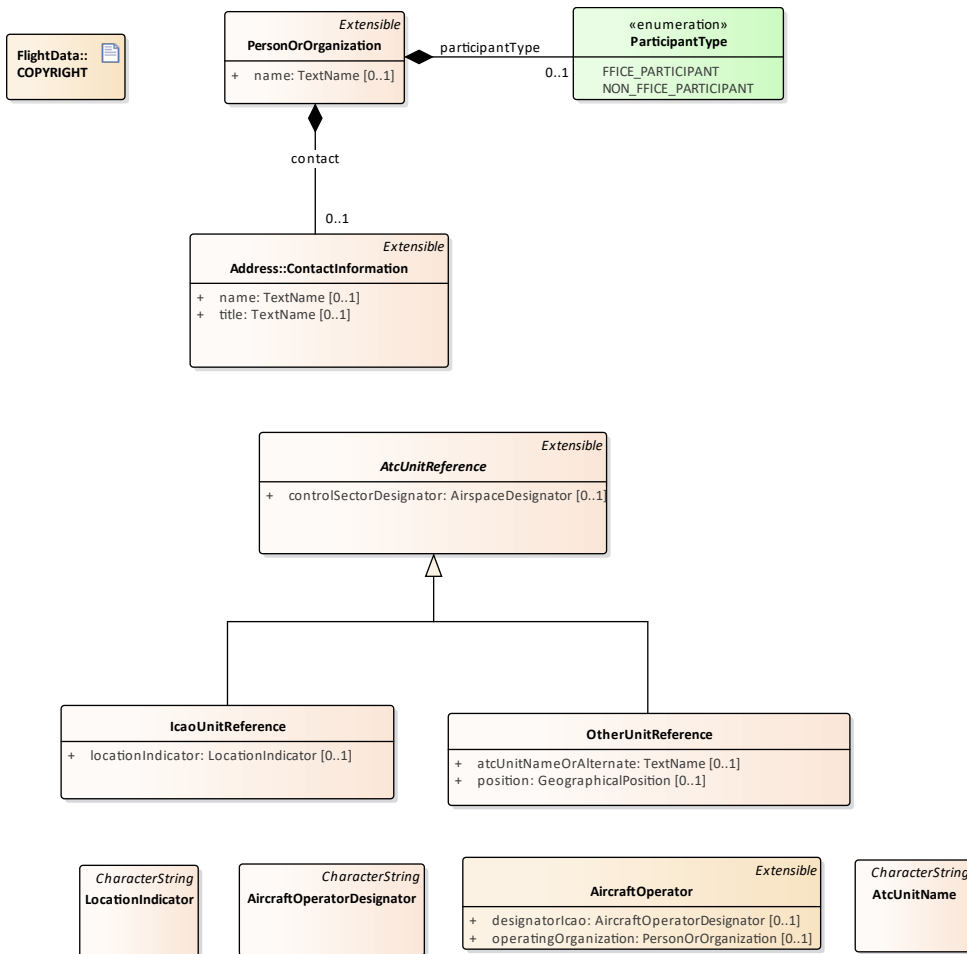




## Organization diagram

Class diagram in package 'Organization'

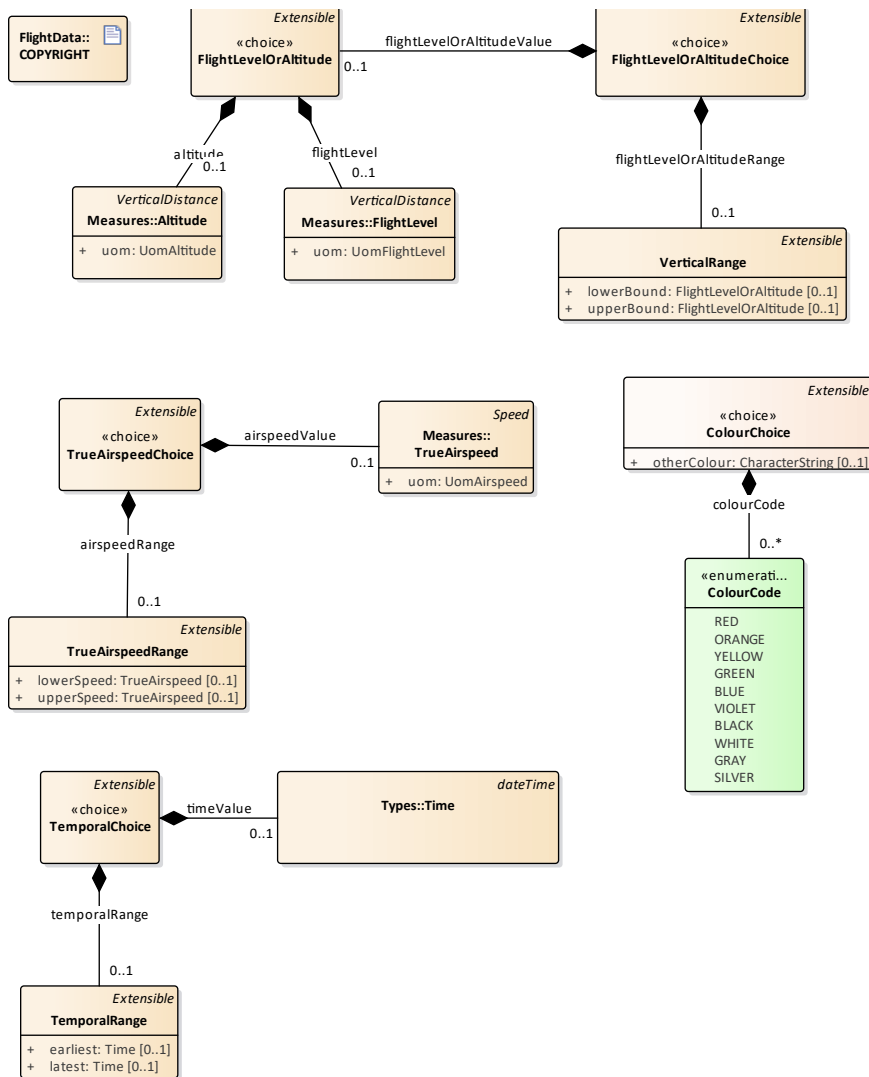
Organization



## RangesAndChoices diagram

Class diagram in package 'RangesAndChoices'

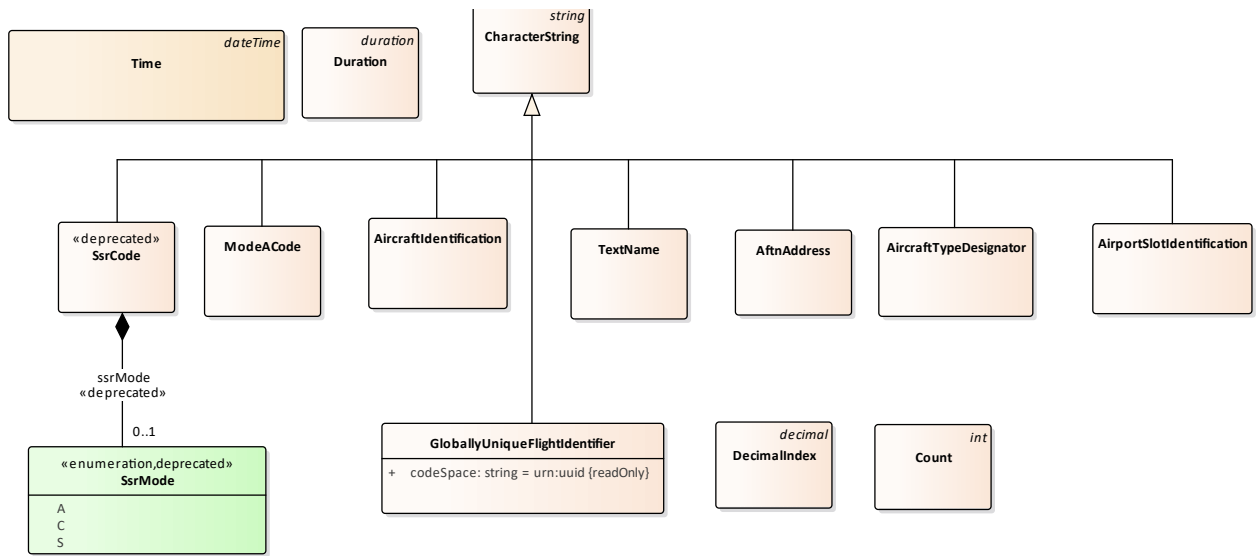
RangesAndChoices



## Types diagram

Class diagram in package 'Types'

Types



## Time diagram

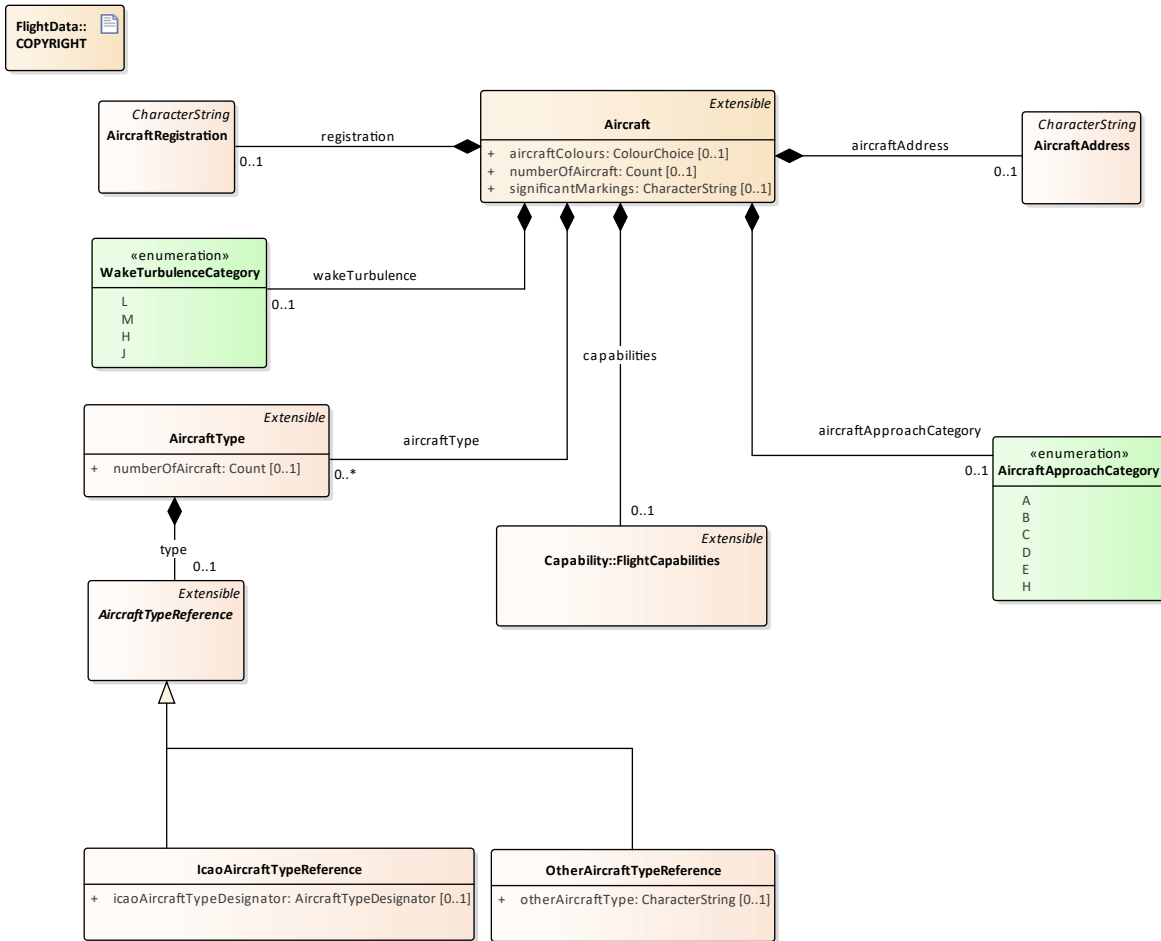
*CompositeStructure diagram in package 'Types'*

Time

# Aircraft diagram

Class diagram in package 'Aircraft'

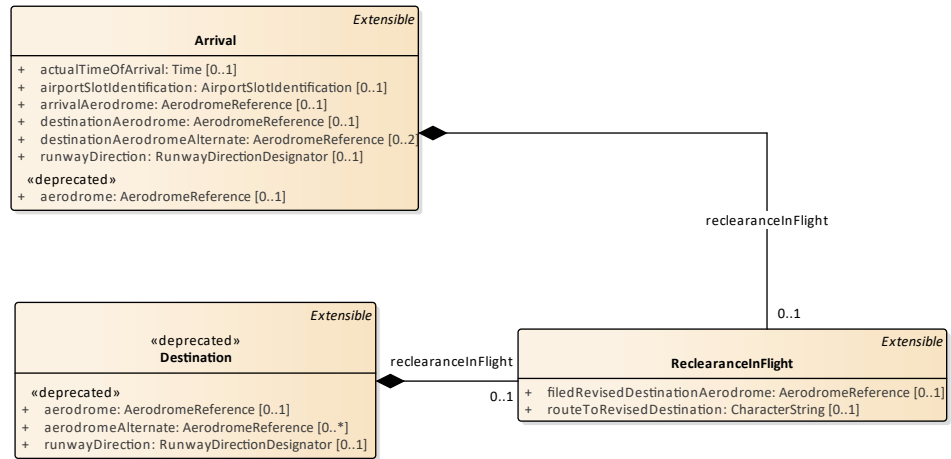
Aircraft



## Arrival diagram

Class diagram in package 'Arrival'

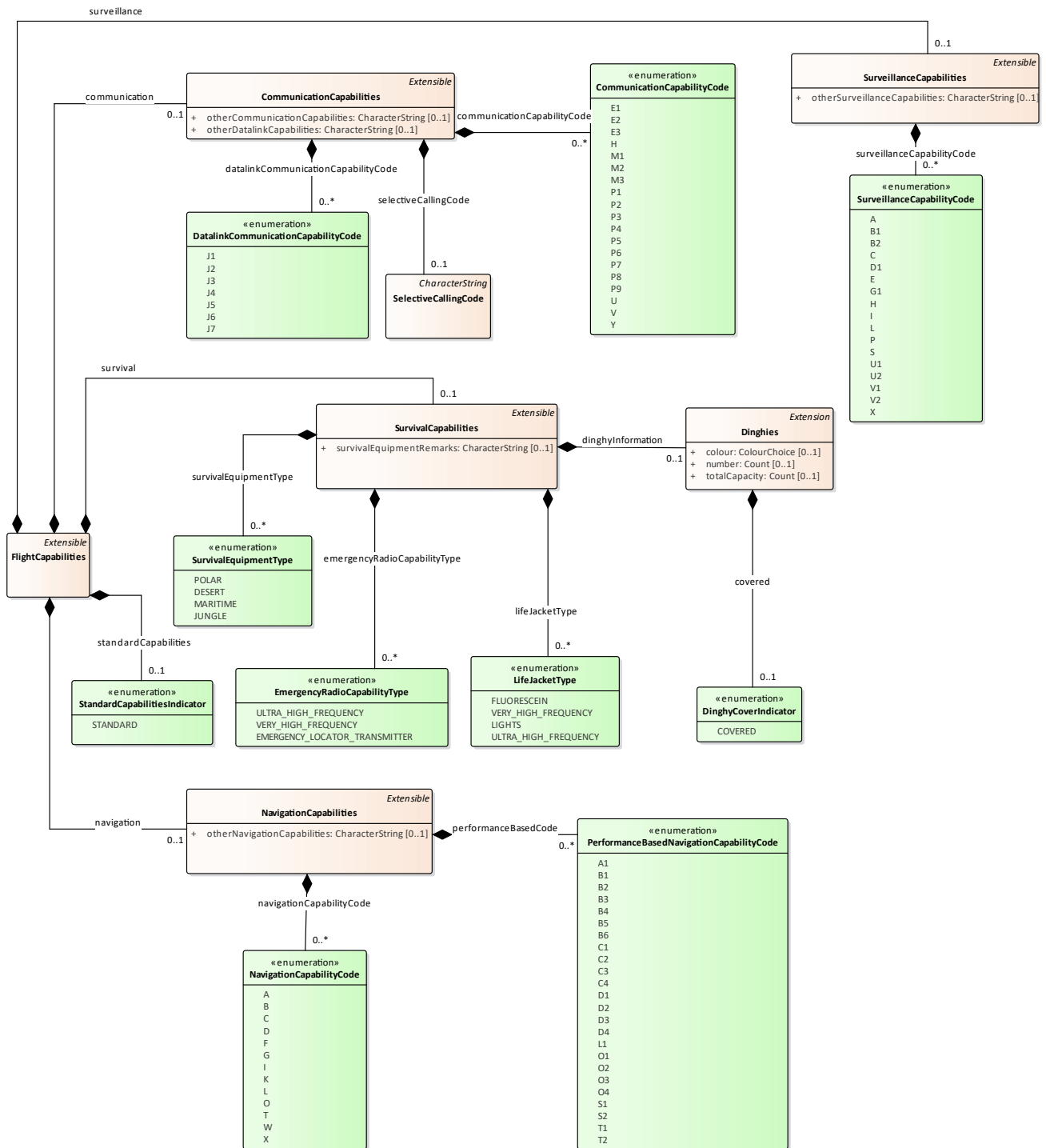
Arrival



# Capability diagram

Class diagram in package 'Capability'

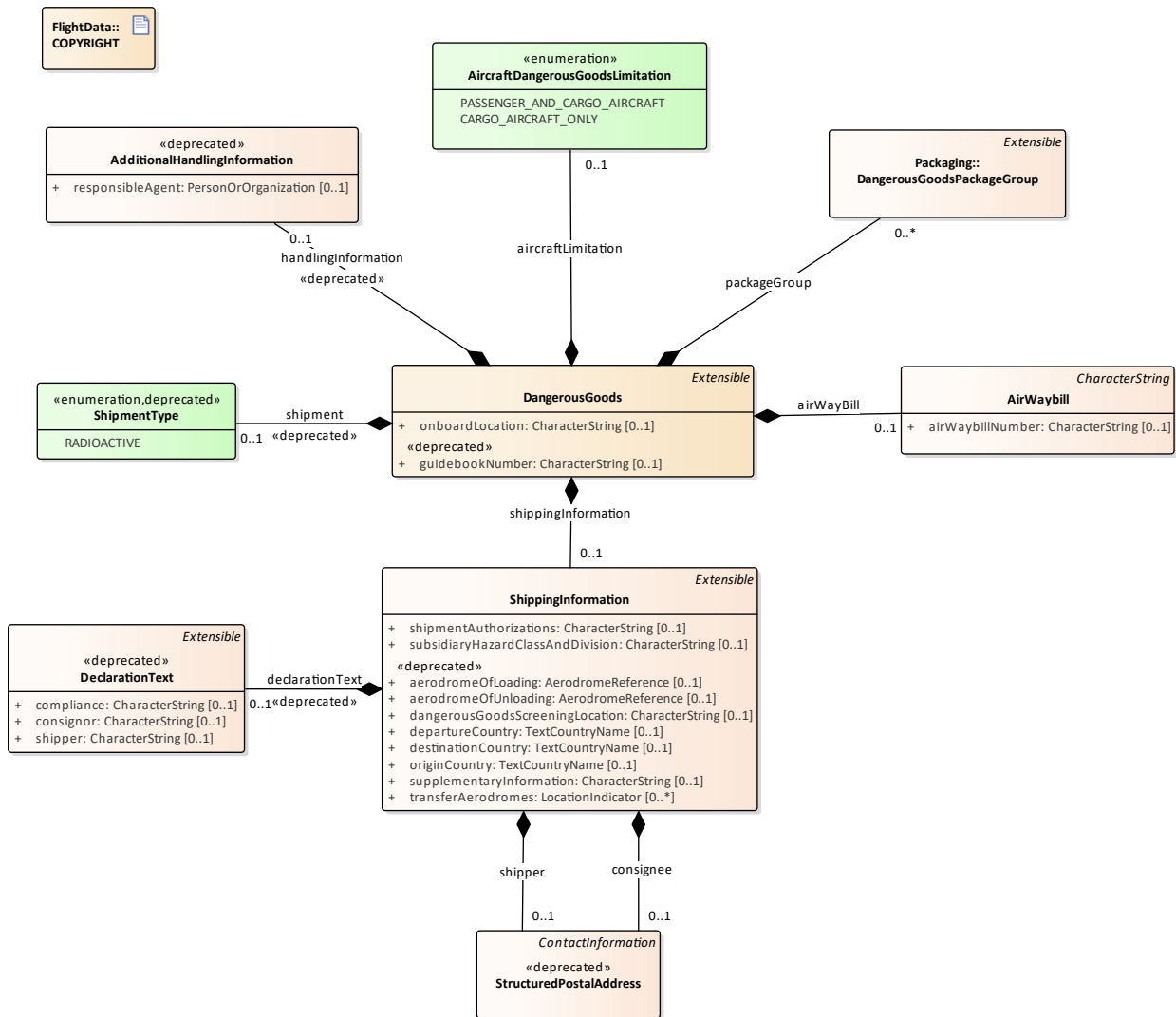
Capability



# DangerousGoods diagram

Class diagram in package 'DangerousGoods'

DangerousGoods

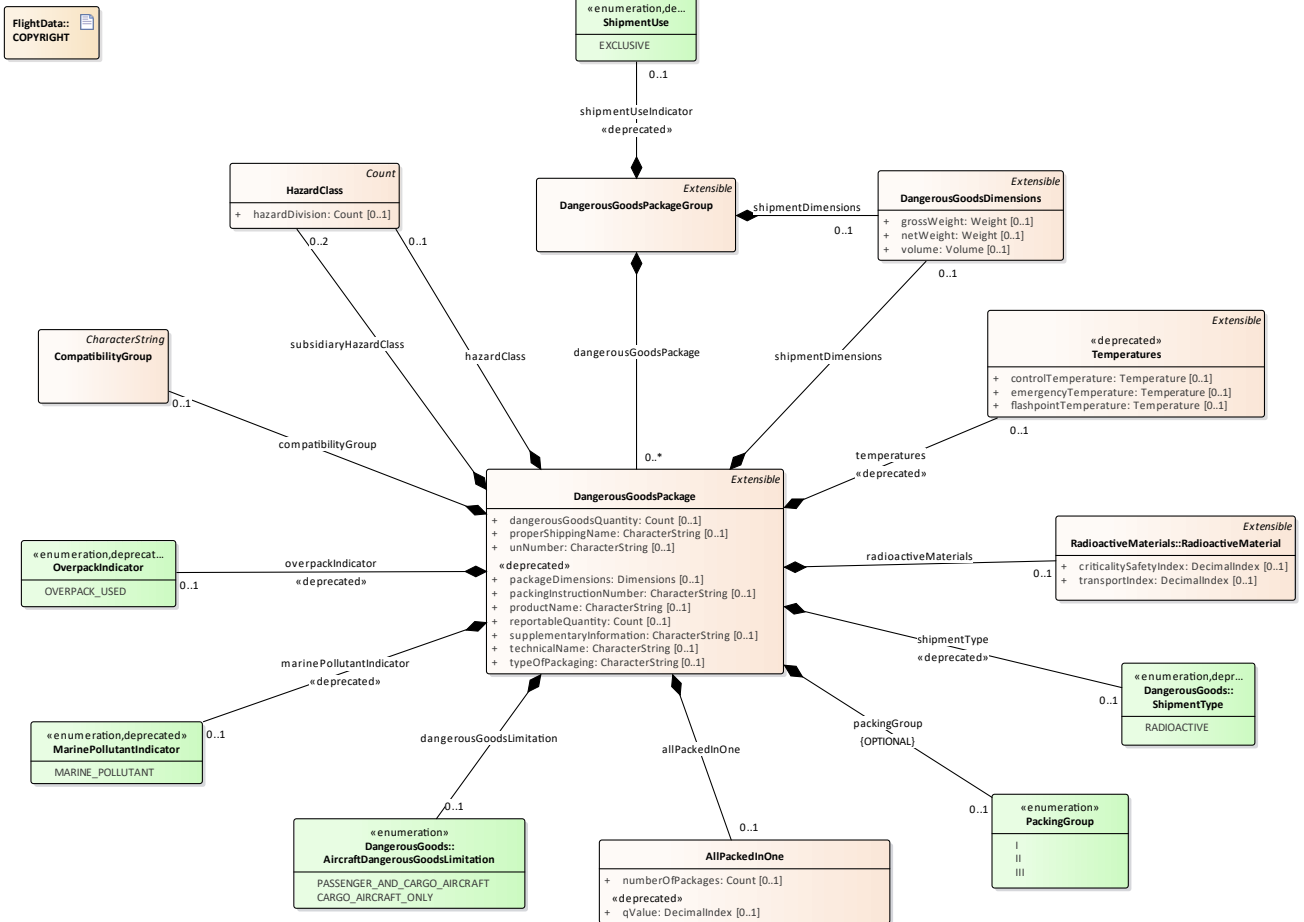




# Packaging diagram

Class diagram in package 'Packaging'

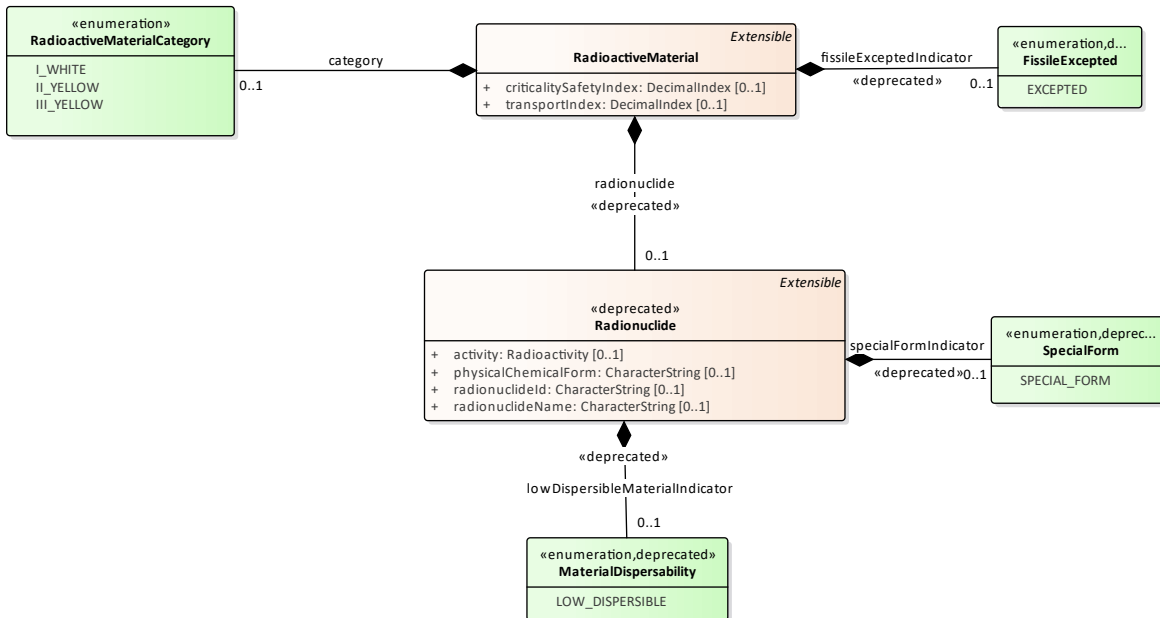
Packaging



## RadioactiveMaterials diagram

Class diagram in package 'RadioactiveMaterials'

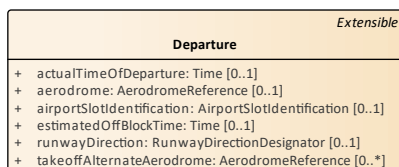
RadioactiveMaterials



## Departure diagram

Class diagram in package 'Departure'

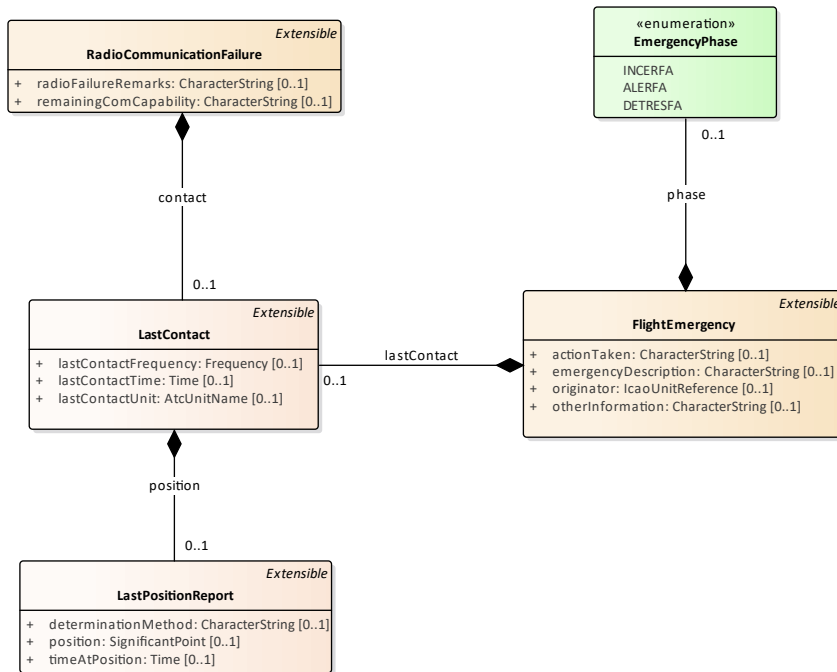
Departure



## Emergency diagram

Class diagram in package 'Emergency'

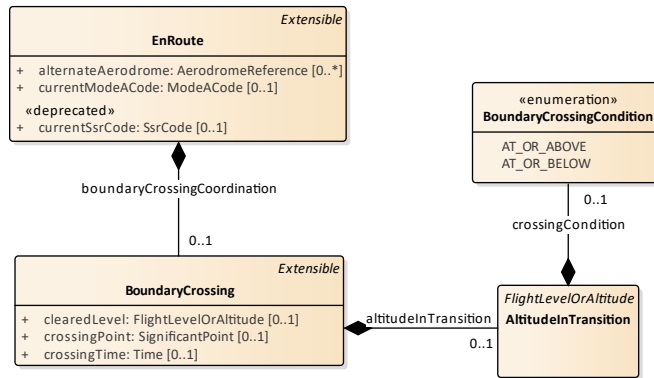
Emergency



## EnRoute diagram

Class diagram in package 'EnRoute'

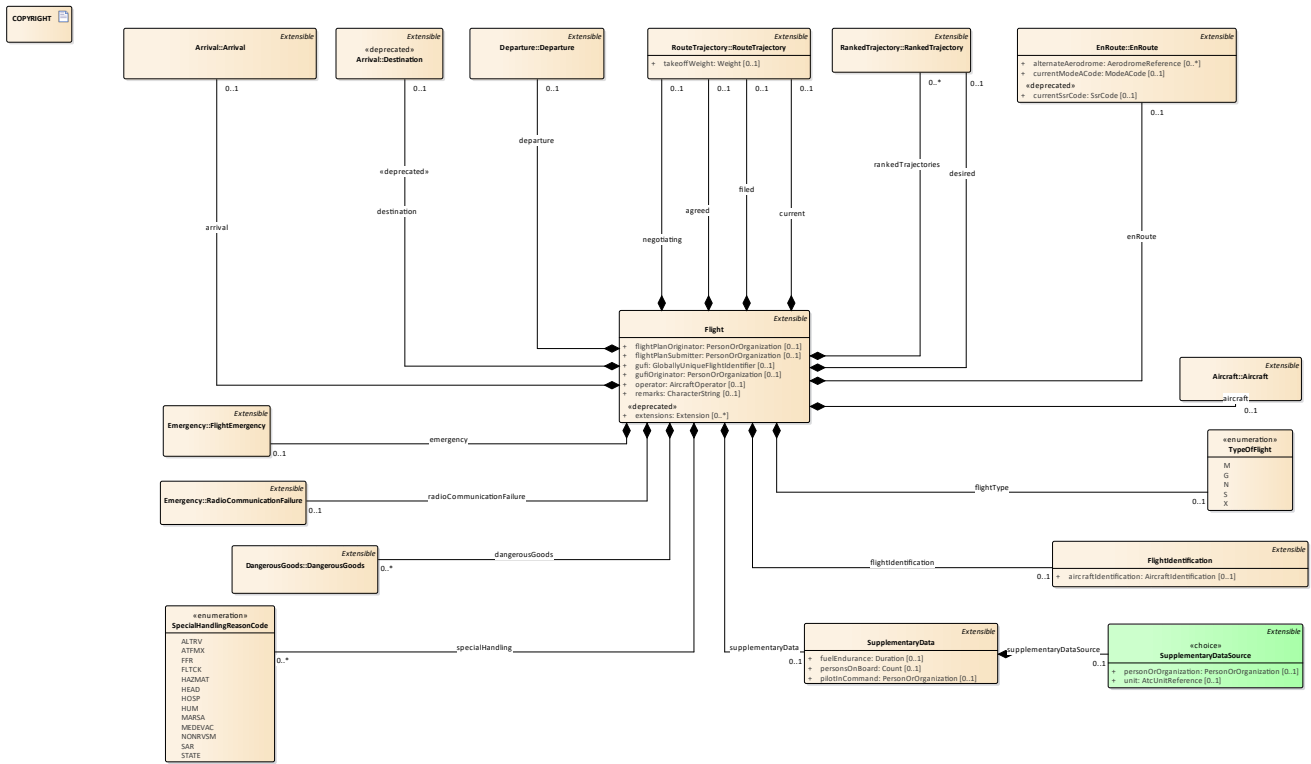
EnRoute



# FlightData diagram

Class diagram in package 'FlightData'

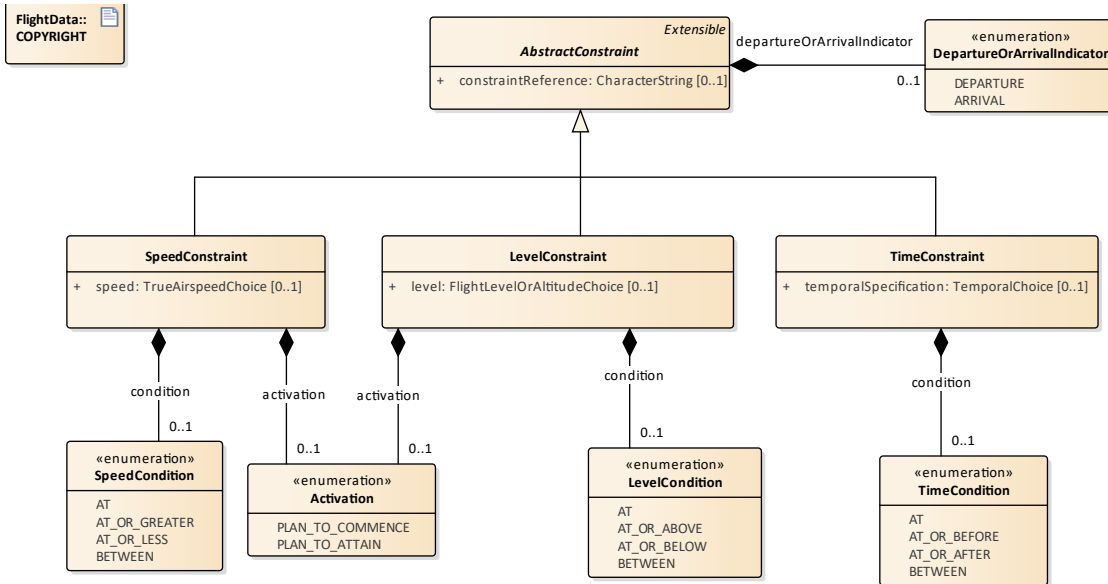
FlightData



# Constraints diagram

Class diagram in package 'Constraints'

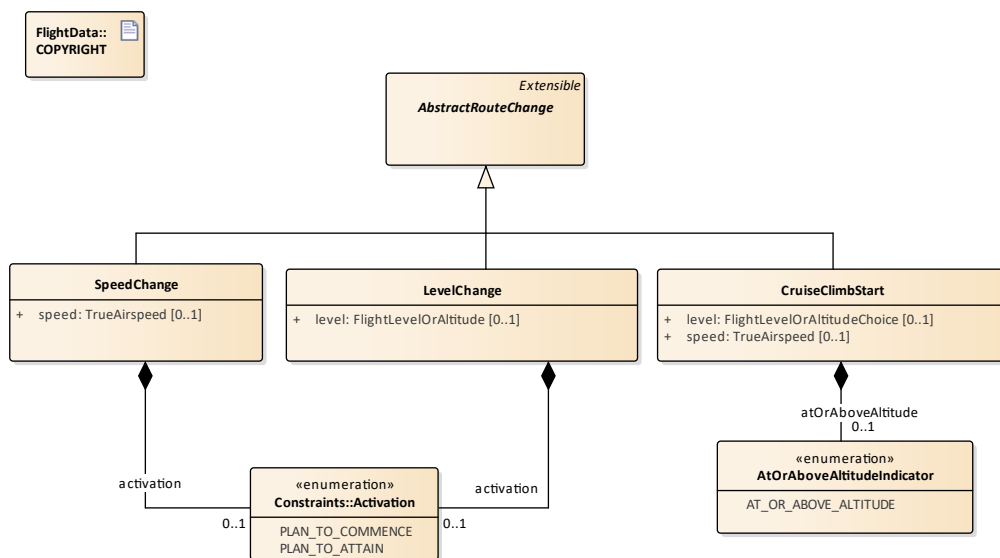
Constraints



## RouteChanges diagram

Class diagram in package 'RouteChanges'

RouteChanges

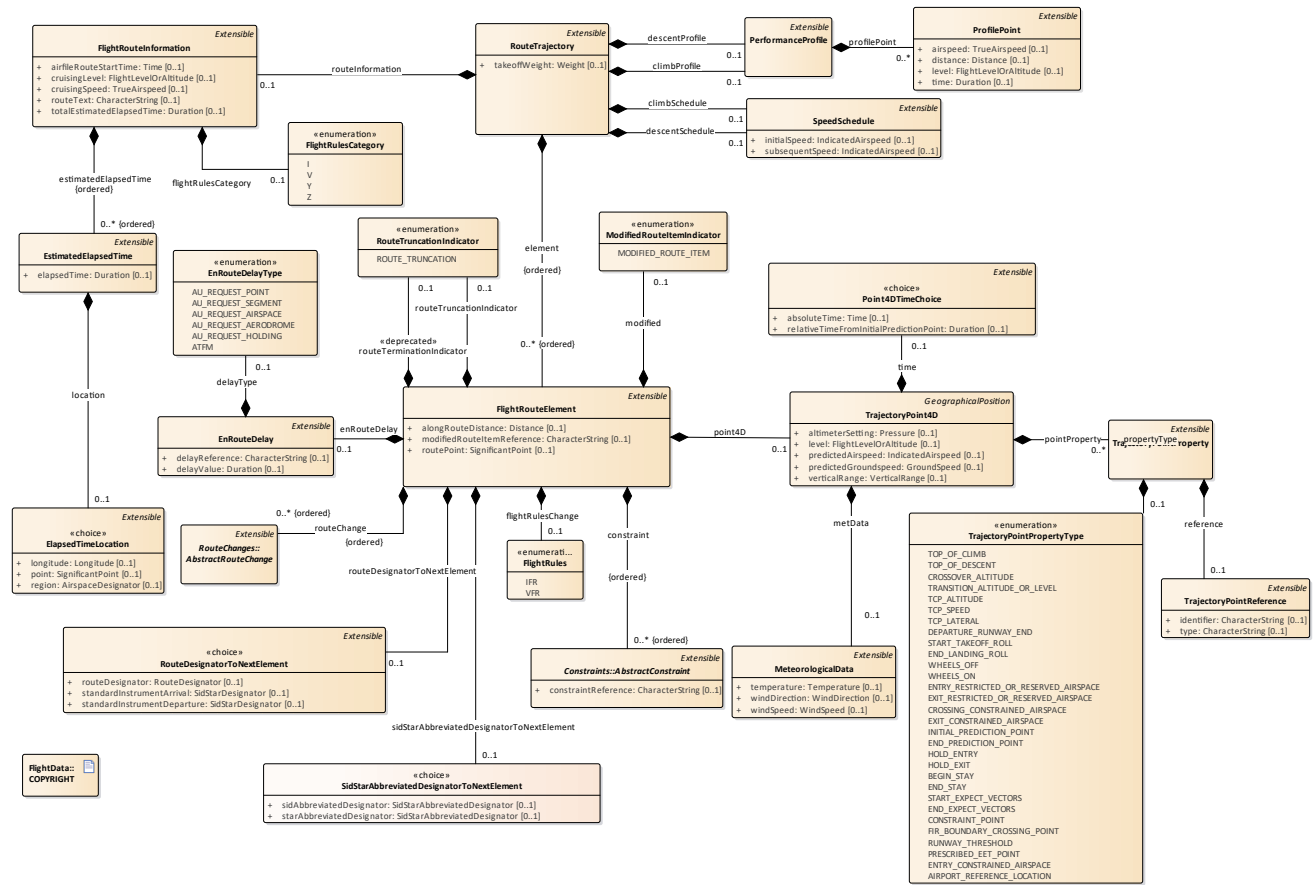




# RouteTrajectory diagram

Class diagram in package 'RouteTrajectory'

RouteTrajectory



## RankedTrajectory diagram

Class diagram in package 'RankedTrajectory'

RankedTrajectory

