

Messaging diagram

Class diagram in package 'Messaging'

Messaging

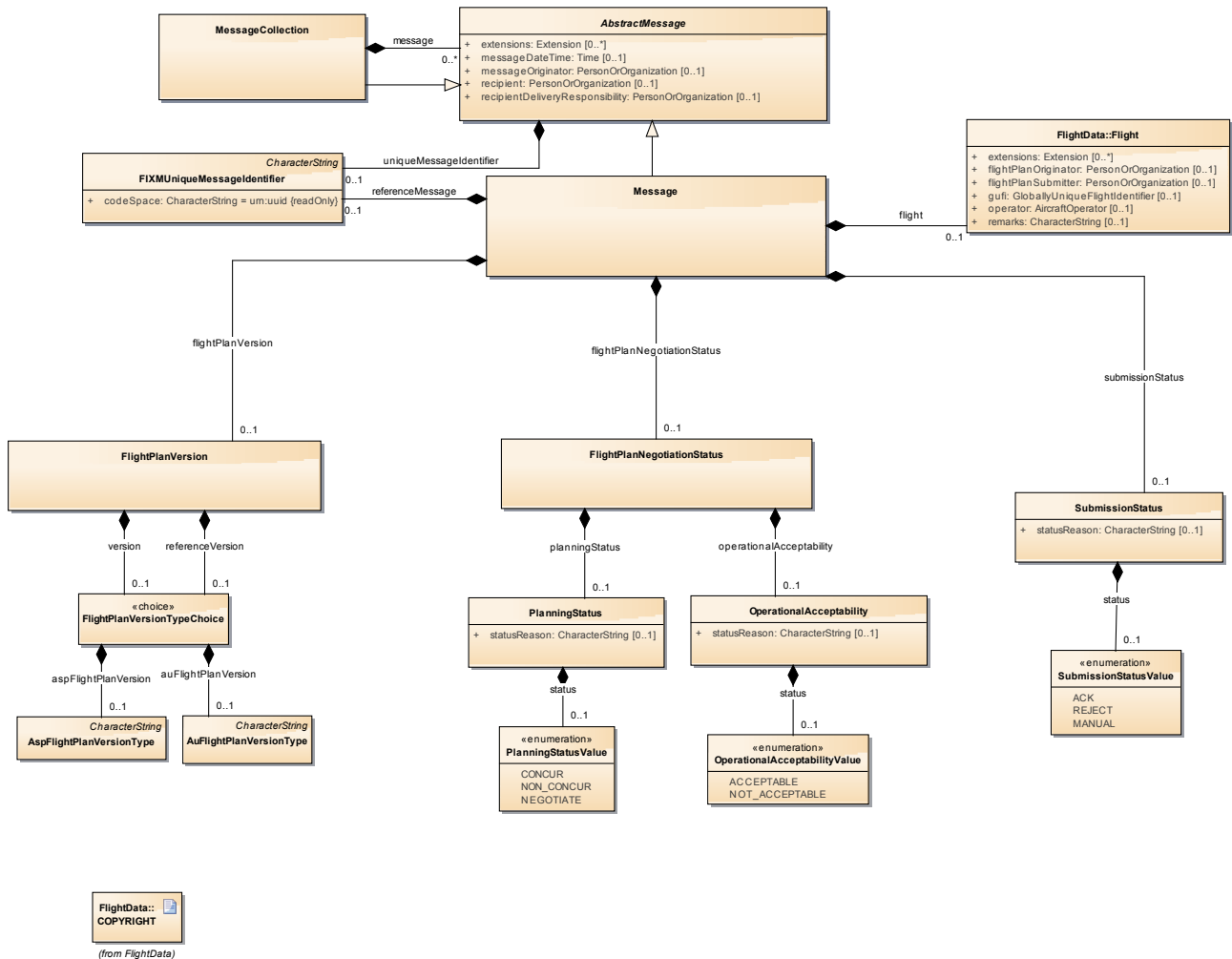


Figure 1: Messaging

Address diagram

Class diagram in package 'Address'

Address

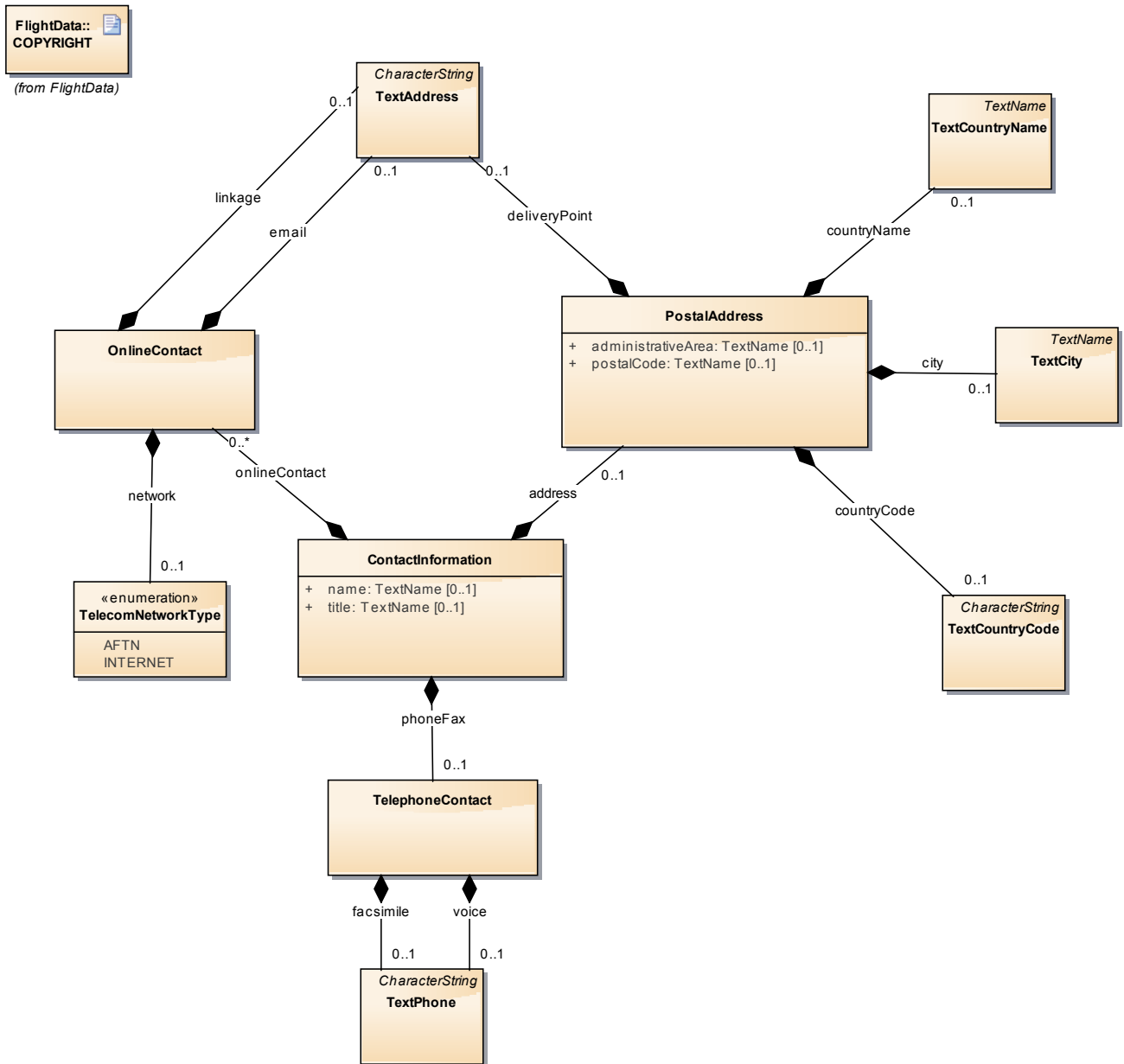


Figure 2: Address

Aerodrome diagram

Class diagram in package 'Aerodrome'

Time associated with the runway

Aerodrome

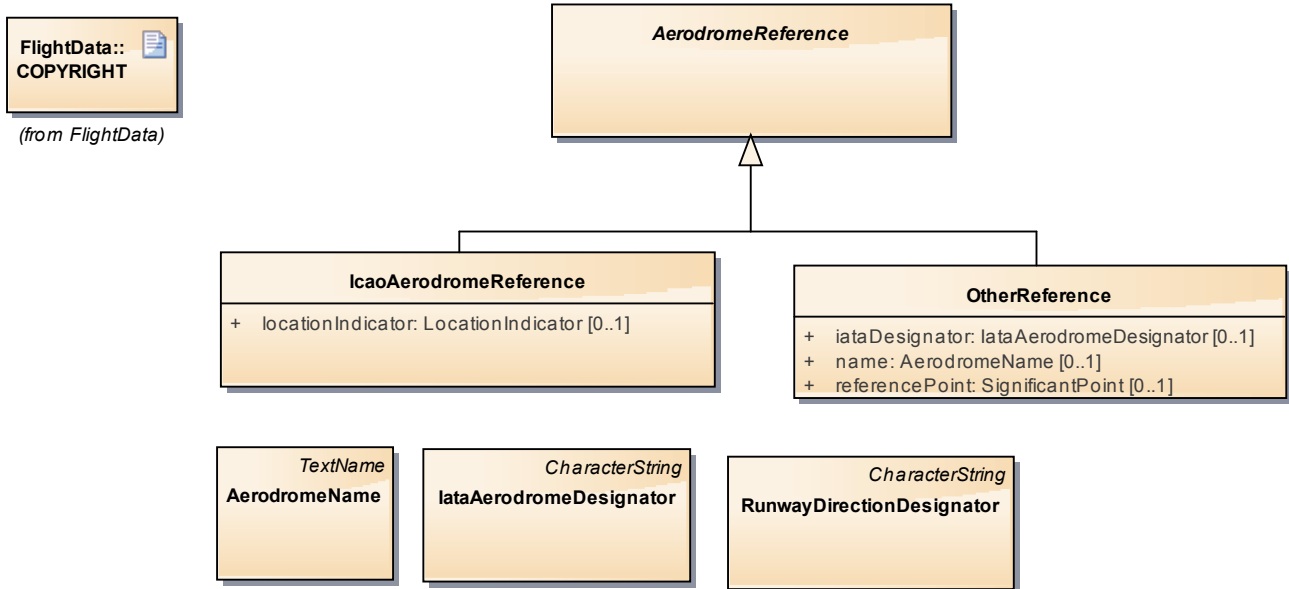


Figure 3: Aerodrome

Airspace diagram

Class diagram in package 'Airspace'

Airspace

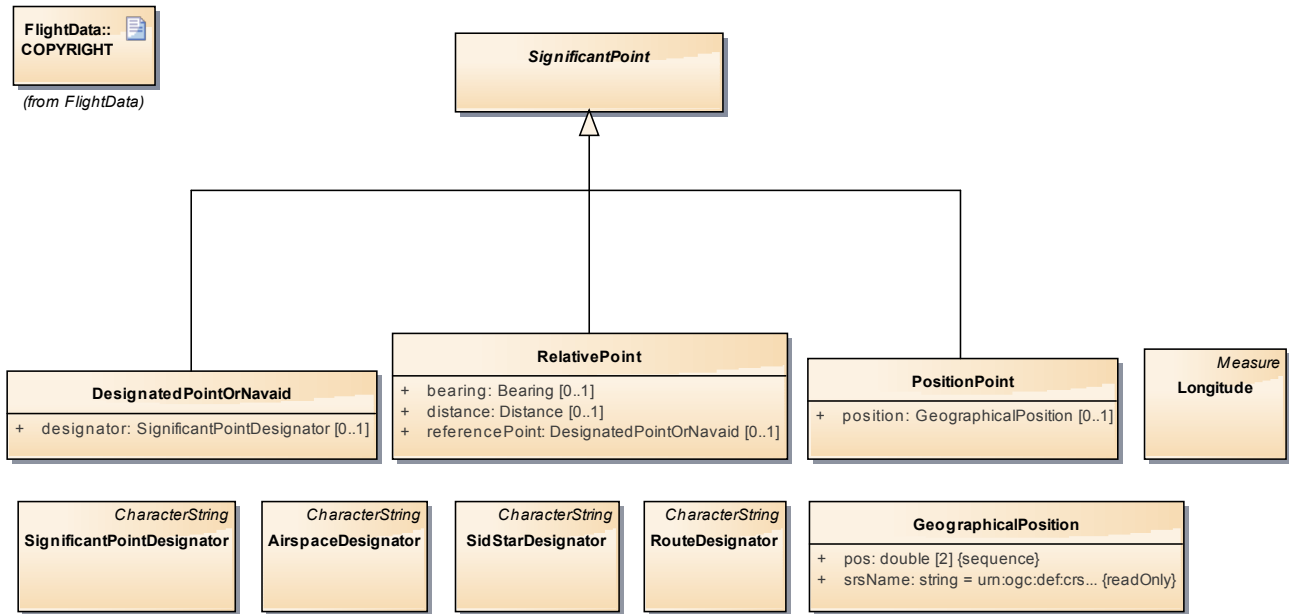


Figure 4: Airspace

Extension diagram

Class diagram in package 'Extension'

Extension

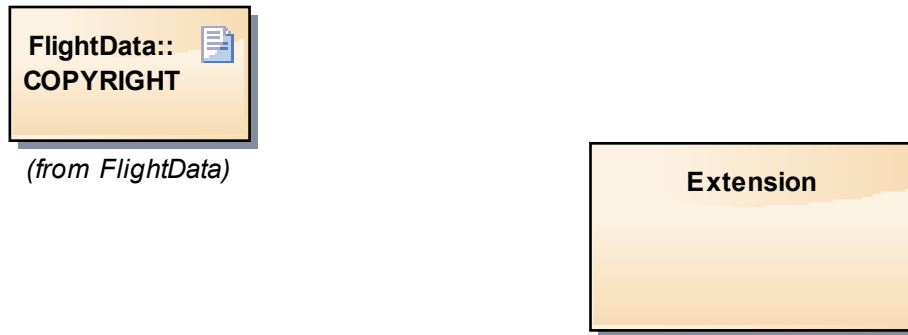


Figure 5: Extension

Measures diagram

Class diagram in package 'Measures'

Measures

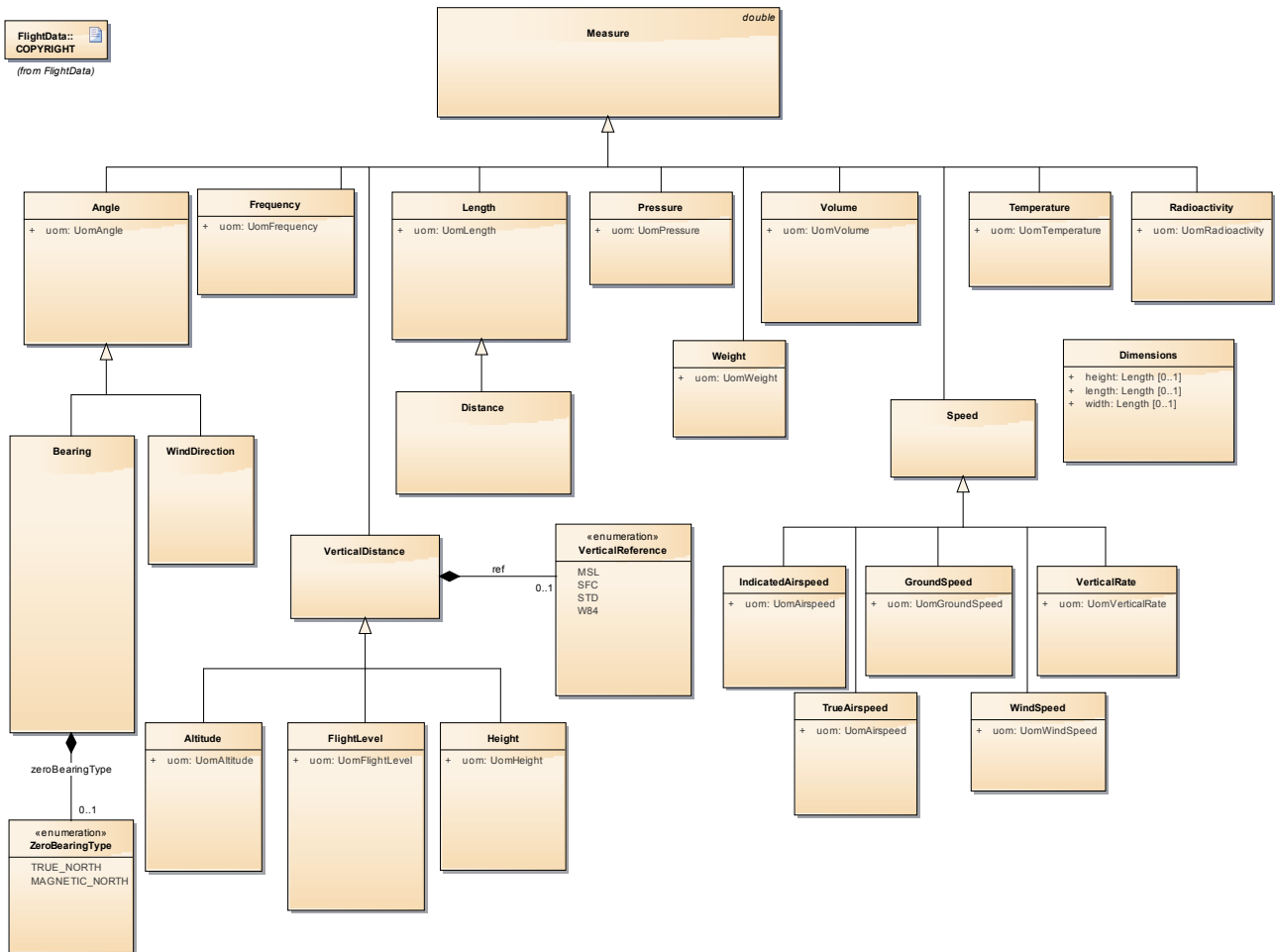


Figure 6: Measures

UnitsOfMeasure diagram

Class diagram in package 'UnitsOfMeasure'

UnitsOfMeasure



(from FlightData)

Figure 7: UnitsOfMeasure

Organization diagram

Class diagram in package 'Organization'

Organization

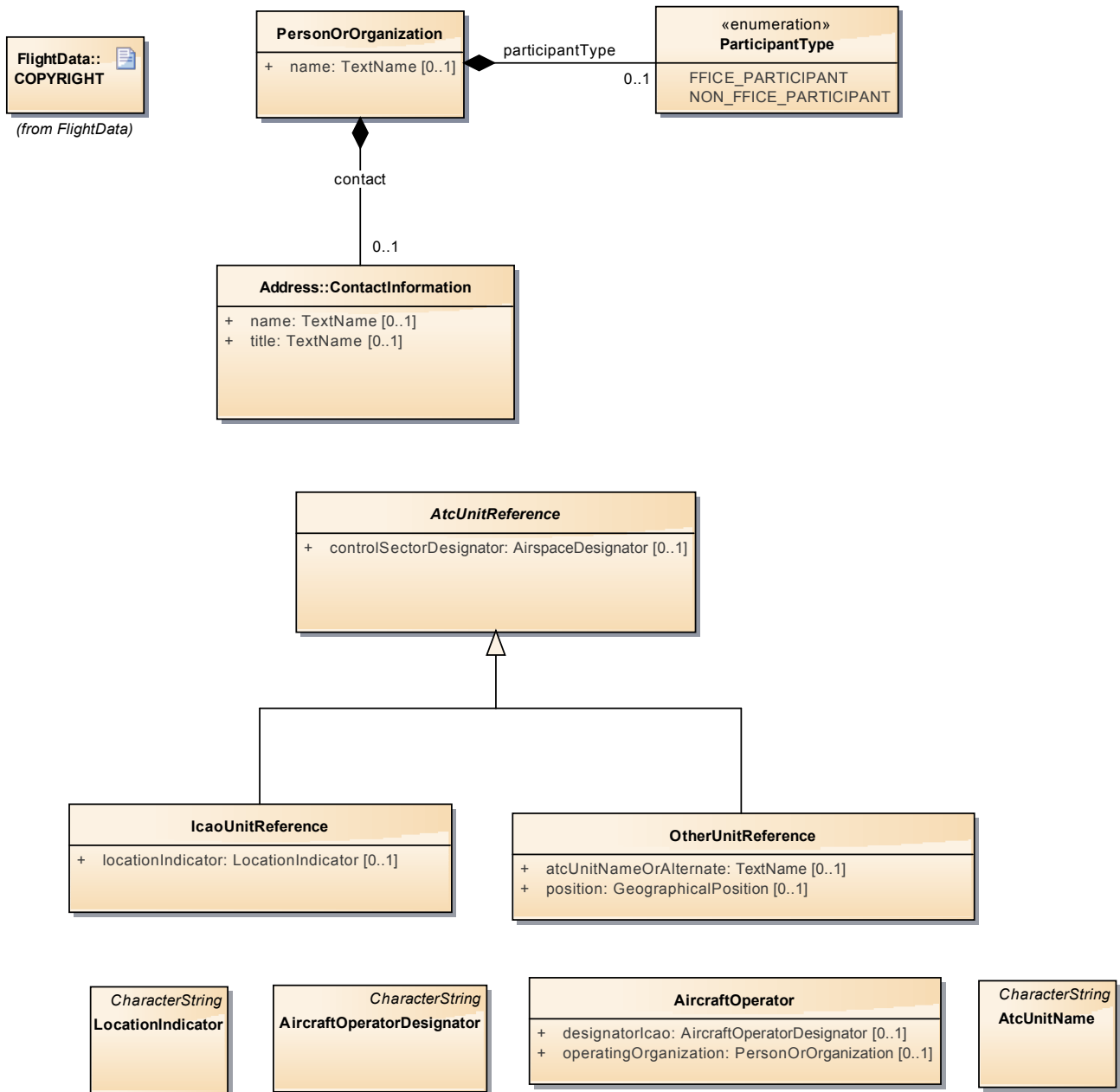


Figure 8: Organization

RangesAndChoices diagram

Class diagram in package 'RangesAndChoices'

RangesAndChoices

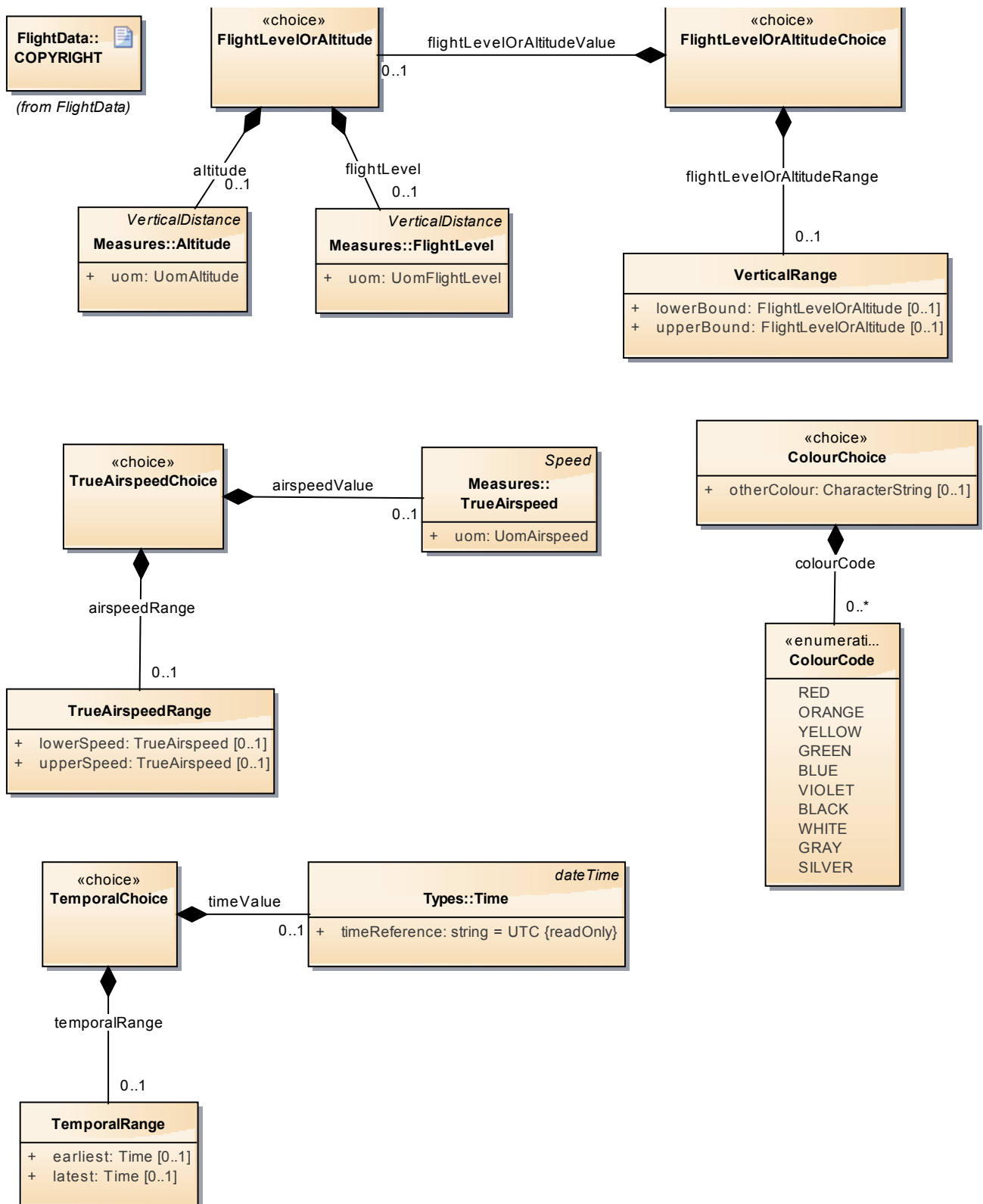
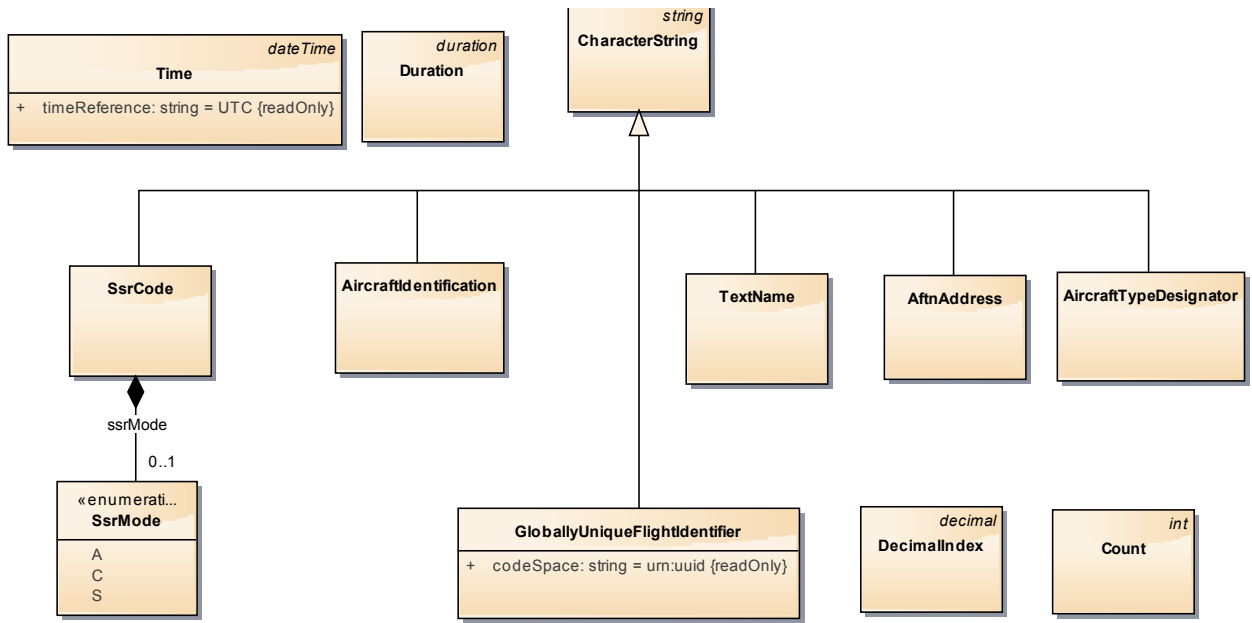


Figure 9: RangesAndChoices

Types diagram

Class diagram in package 'Types'

Types



(from FlightData)

Figure 10: Types

Time diagram

CompositeStructure diagram in package 'Types'

Time

Figure 11: Time

Aircraft diagram

Class diagram in package 'Aircraft'

Aircraft

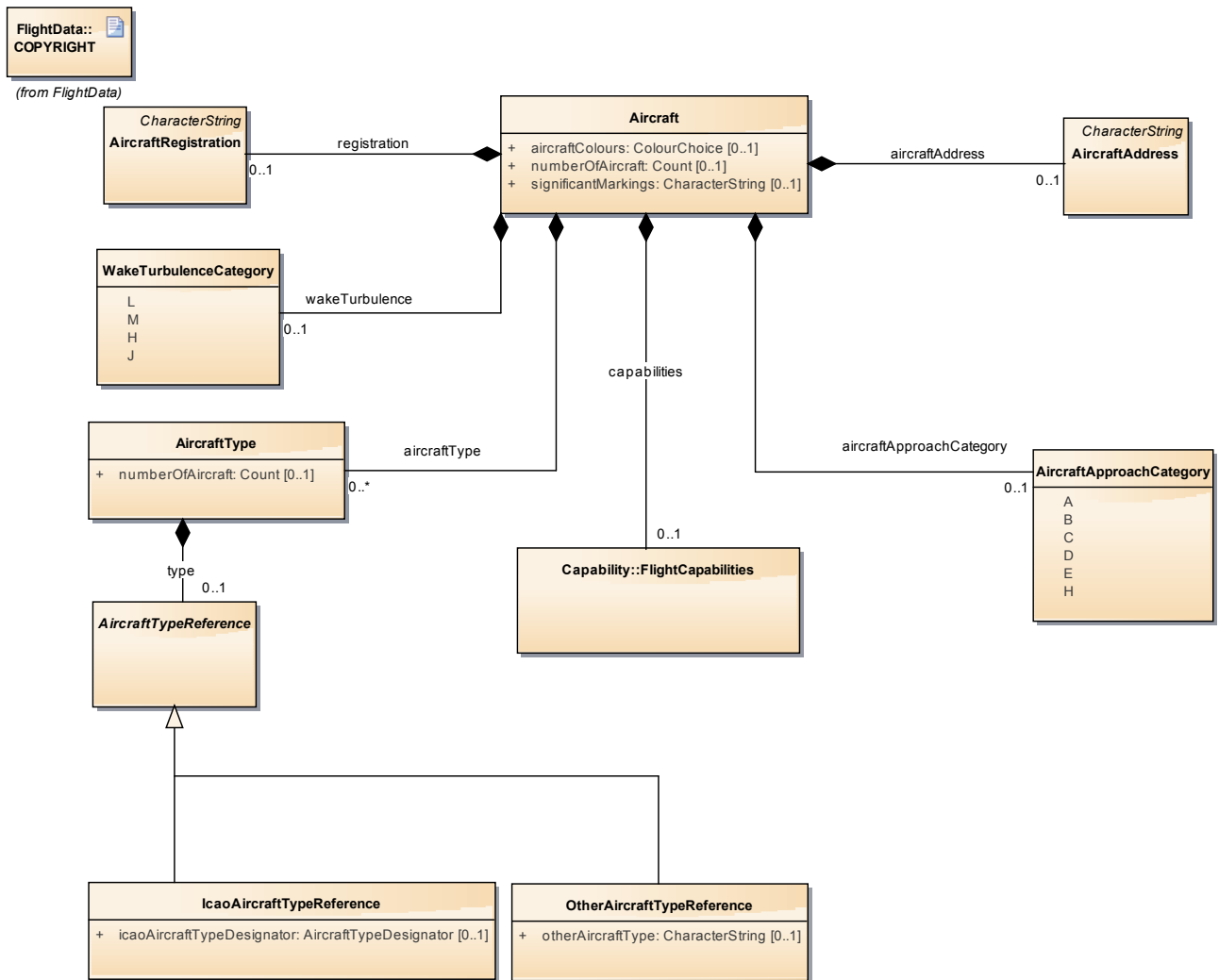


Figure 12: Aircraft

Arrival diagram

Class diagram in package 'Arrival'

Arrival

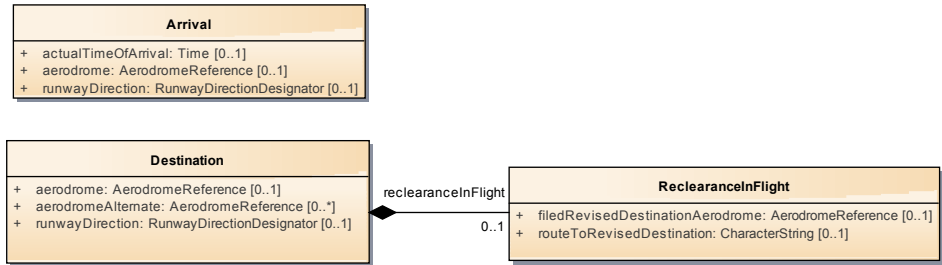
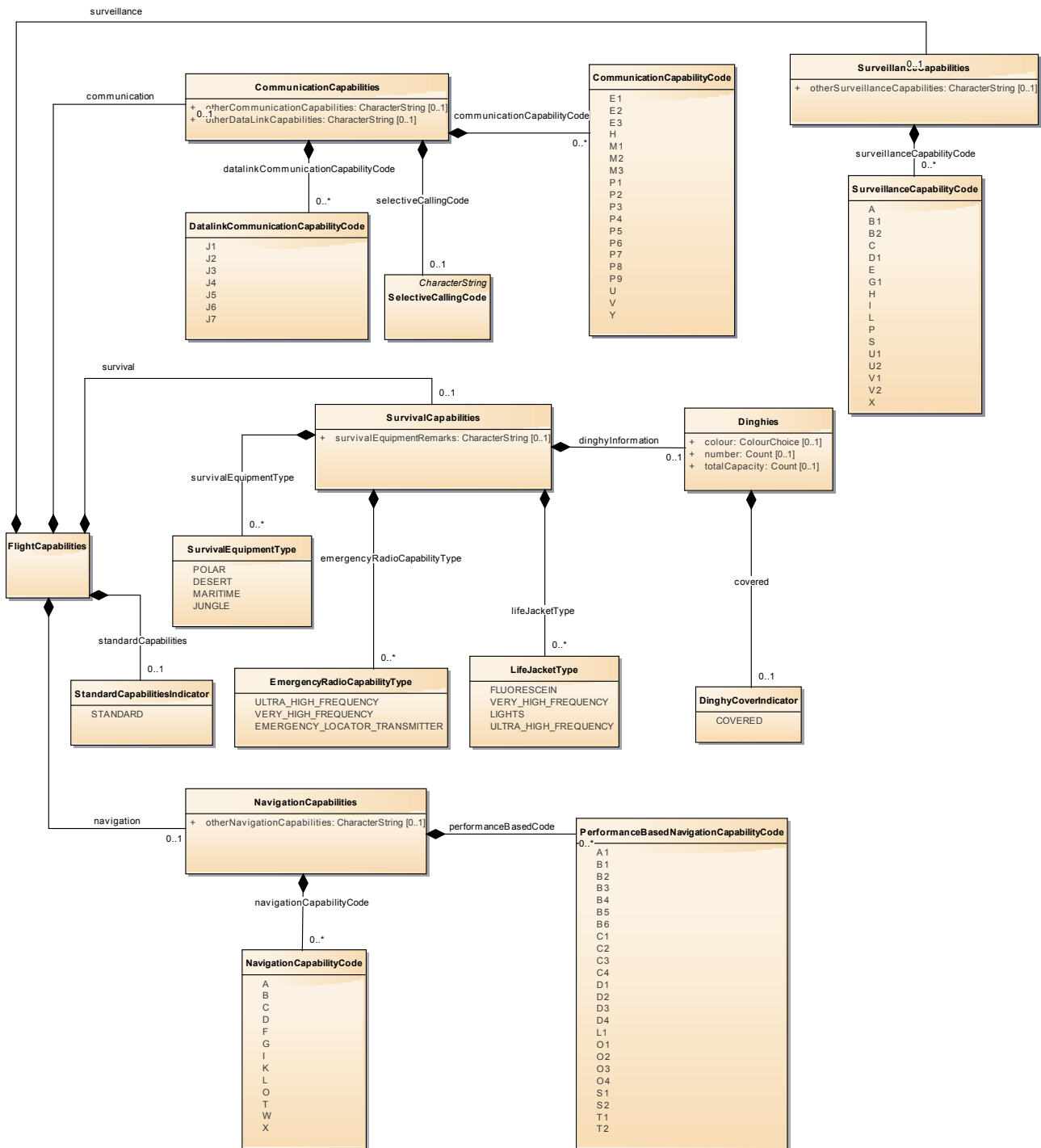


Figure 13: Arrival

Capability diagram

Class diagram in package 'Capability'

Capability



(from FlightData)

Figure 14: Capability

DangerousGoods diagram

Class diagram in package 'DangerousGoods'

DangerousGoods

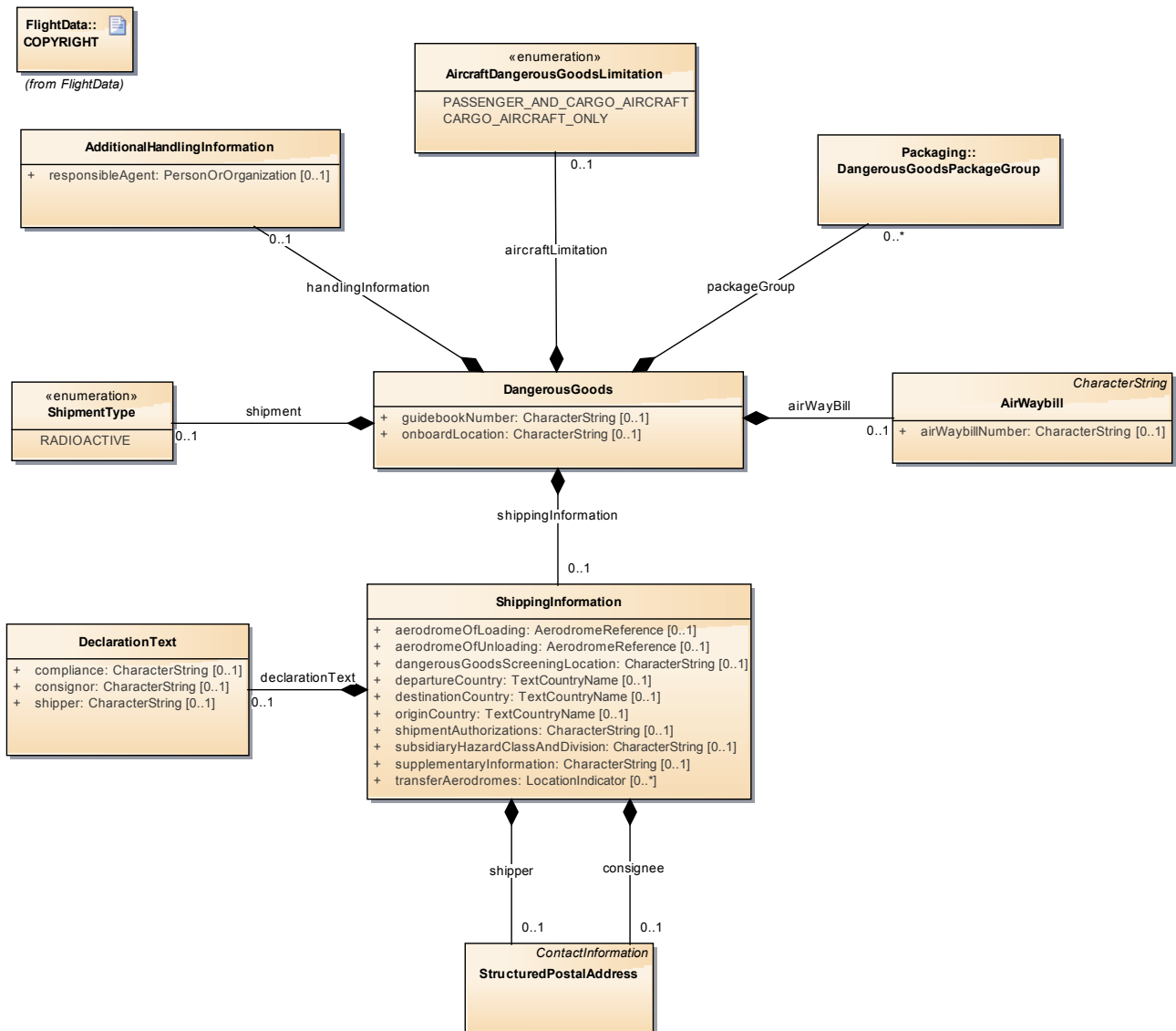


Figure 15: DangerousGoods

Packaging diagram

Class diagram in package 'Packaging'

Packaging

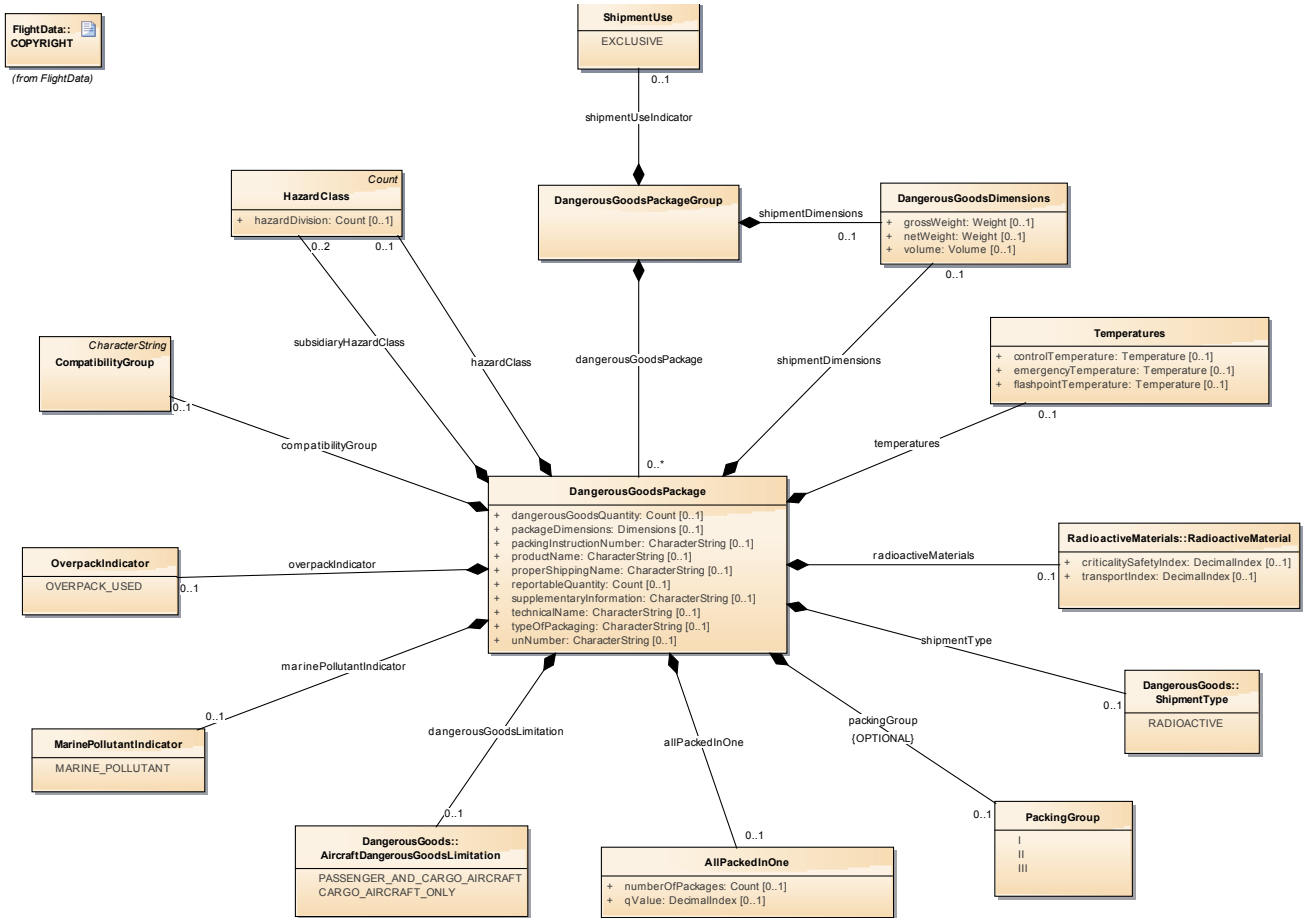


Figure 16: Packaging

RadioactiveMaterials diagram

Class diagram in package 'RadioactiveMaterials'

RadioactiveMaterials

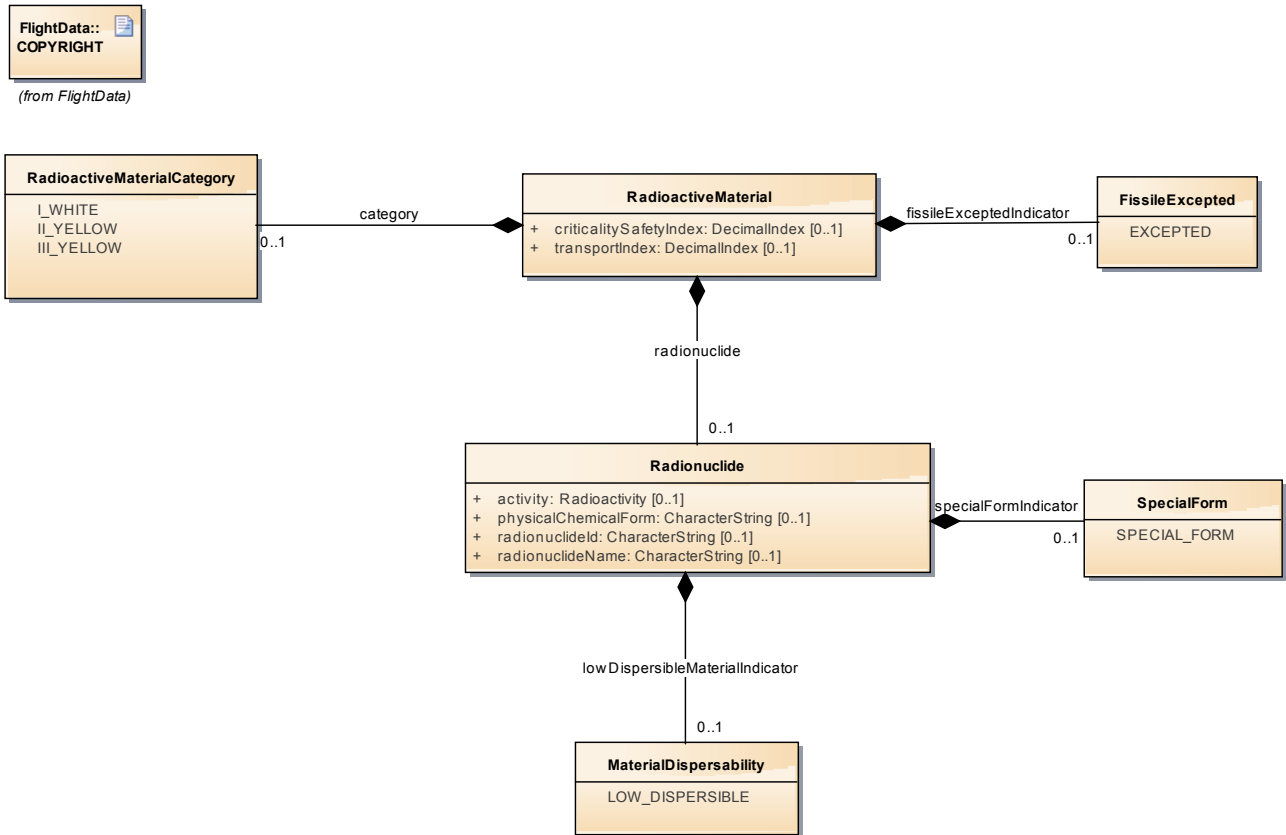


Figure 17: RadioactiveMaterials

Departure diagram

Class diagram in package 'Departure'

Departure



(from FlightData)

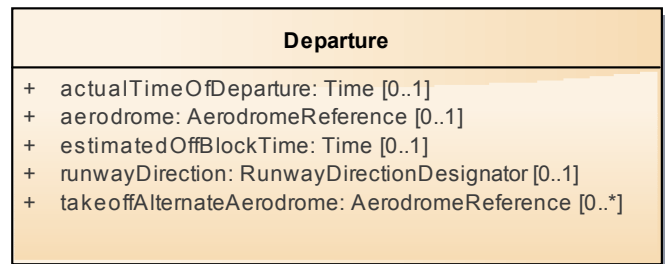


Figure 18: Departure

Emergency diagram

Class diagram in package 'Emergency'

Emergency



(from FlightData)

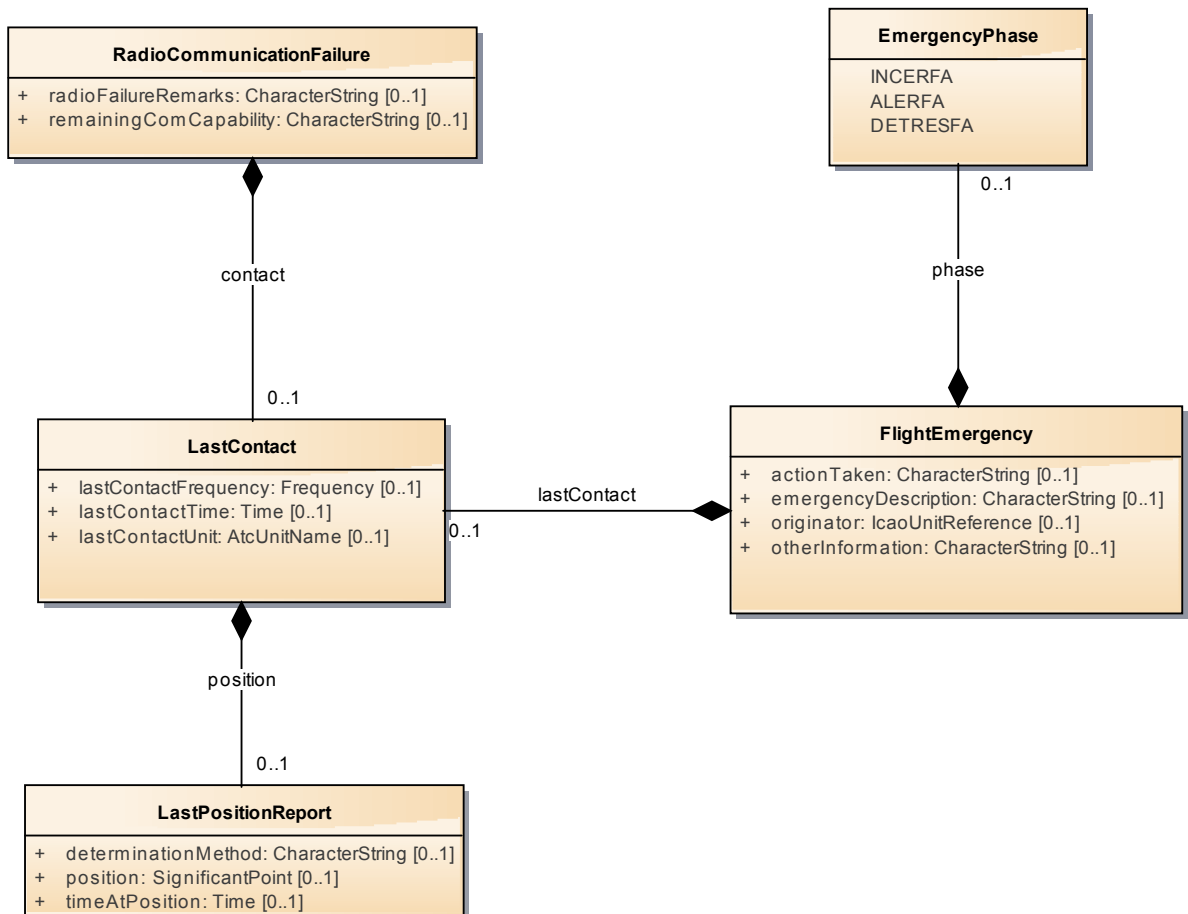


Figure 19: Emergency

EnRoute diagram

Class diagram in package 'EnRoute'

EnRoute



(from FlightData)

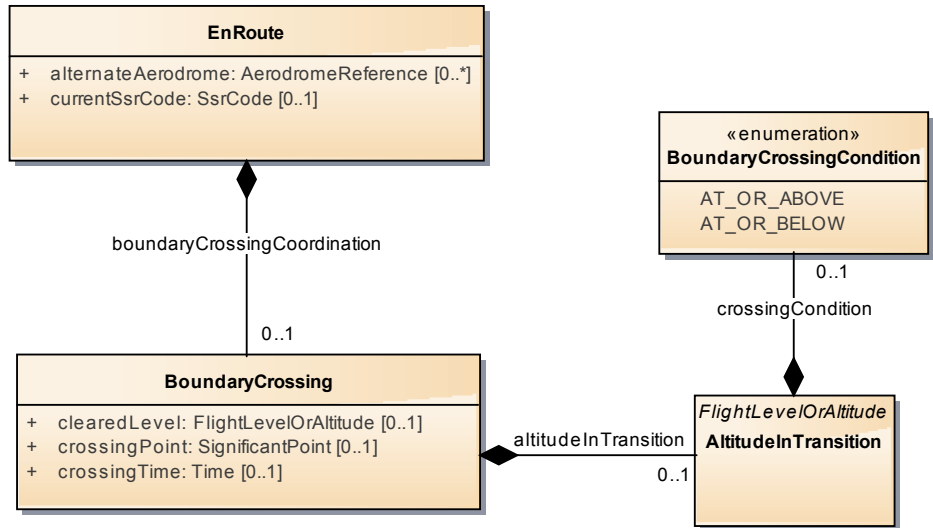


Figure 20: EnRoute

FlightData diagram

Class diagram in package 'FlightData'

Originator of the Flight Plan, can be FF-ICE Participant or a non-upgraded ASP. [adapted from ICAO Draft FF-ICE Implementation Guidance] Equivalent to ATS 18 ORGN/.

FlightData

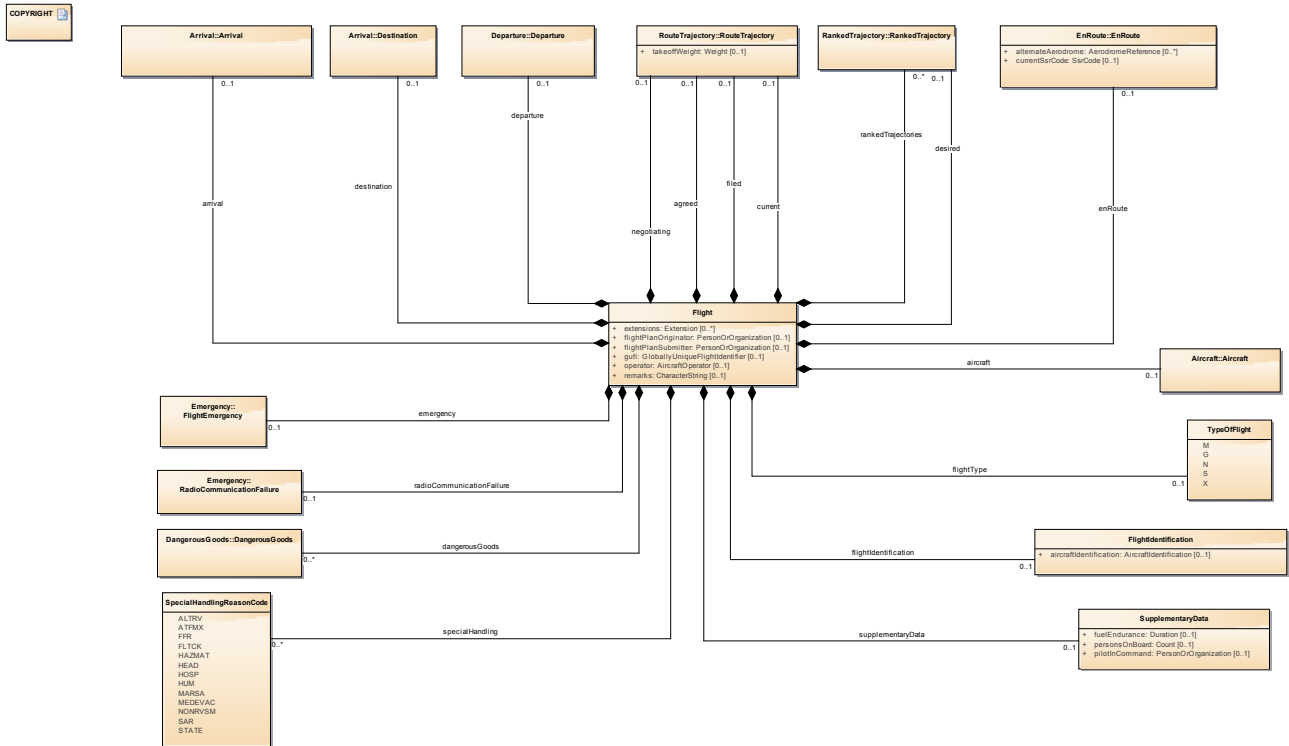


Figure 21 : FlightData

Constraints diagram

Class diagram in package 'Constraints'

Constraints

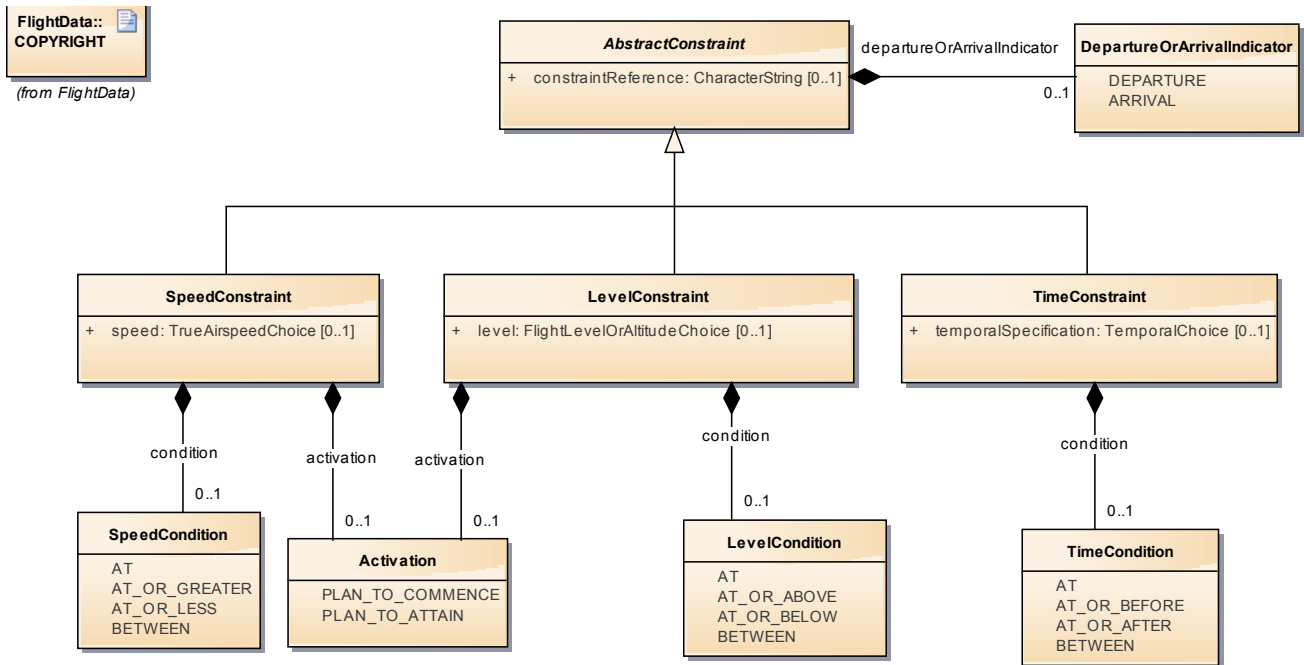


Figure 22: Constraints

RouteChanges diagram

Class diagram in package 'RouteChanges'

RouteChanges

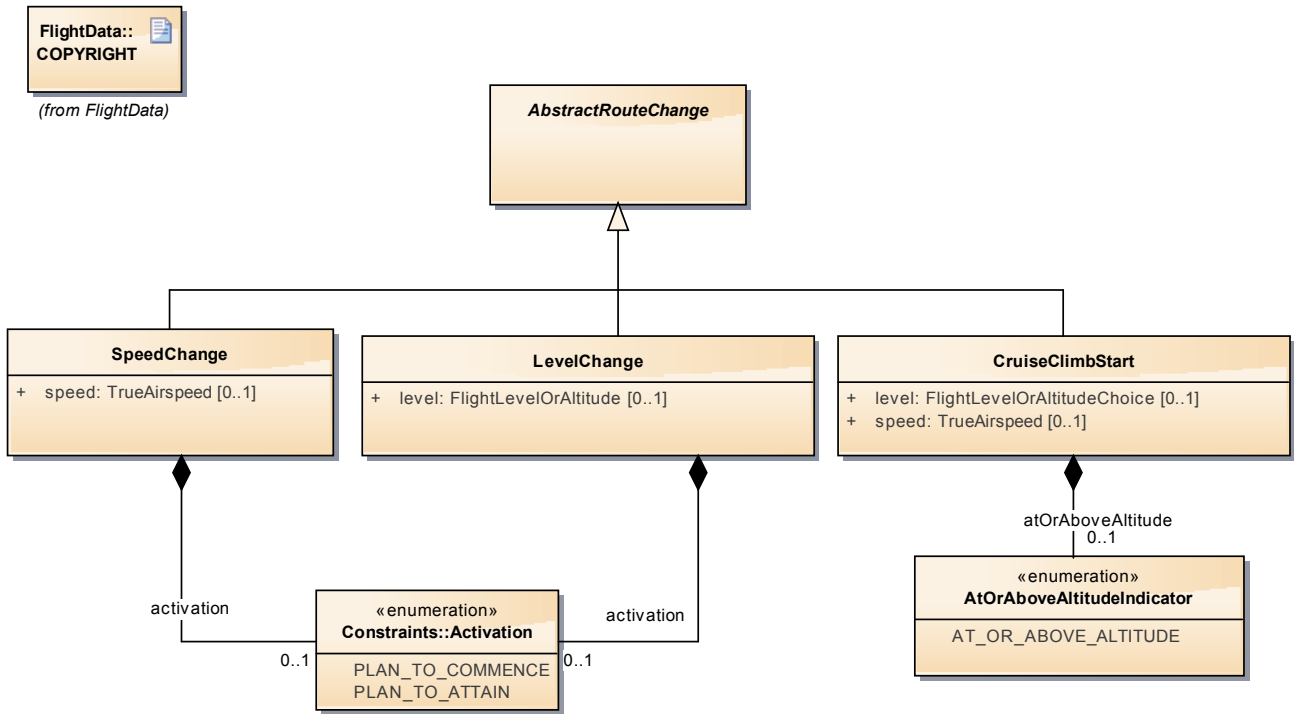


Figure 23: RouteChanges

RouteTrajectory diagram

Class diagram in package 'RouteTrajectory'

RouteTrajectory

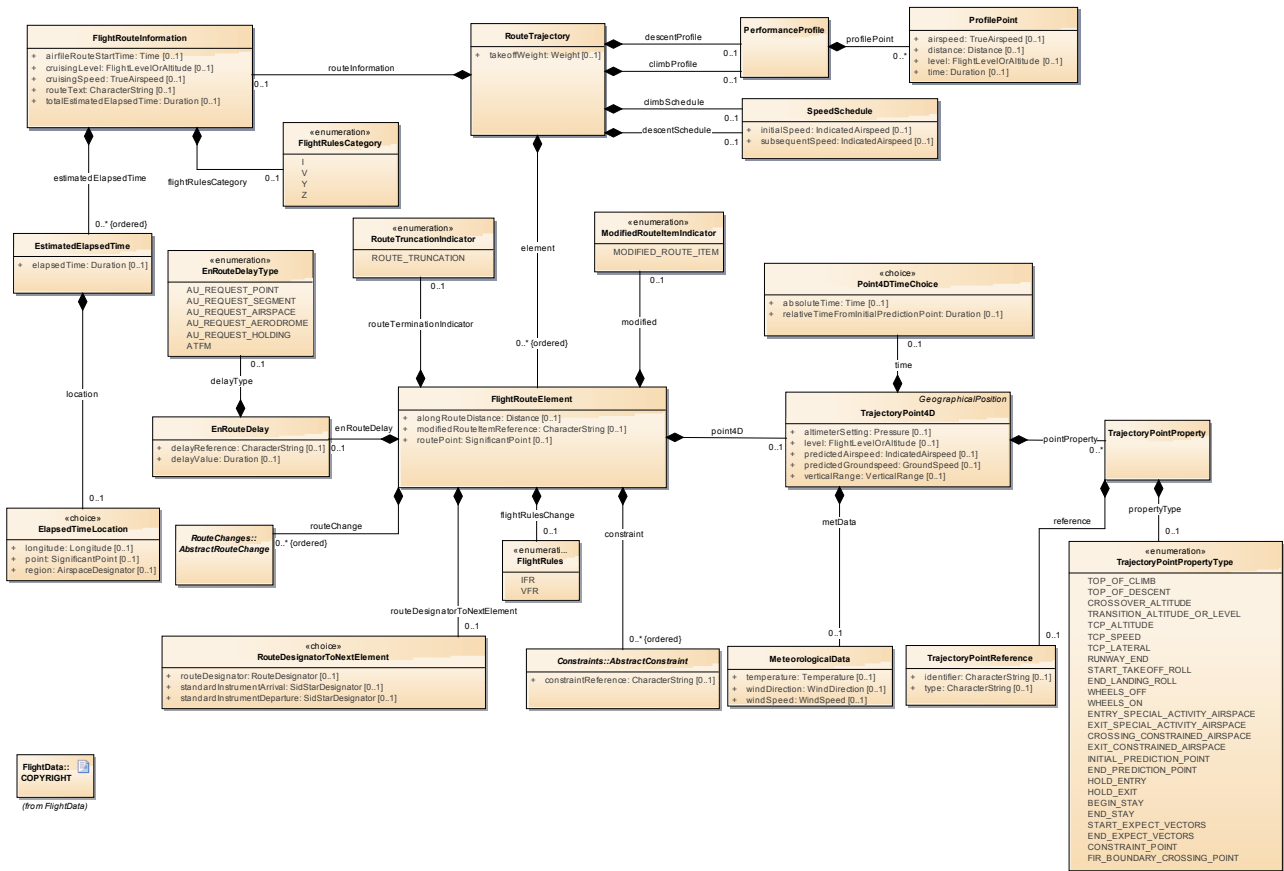


Figure 24: RouteTrajectory

RankedTrajectory diagram

Class diagram in package 'RankedTrajectory'

RankedTrajectory

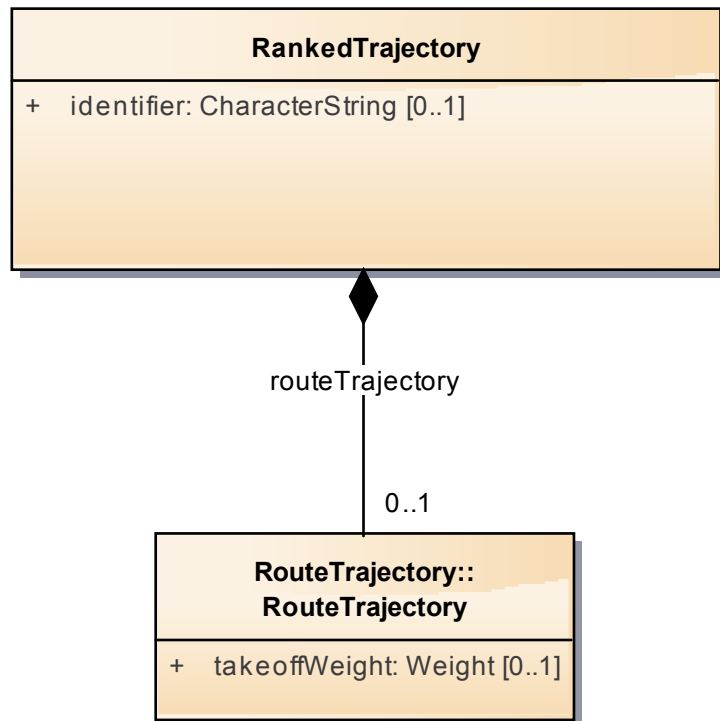


Figure 25: RankedTrajectory

