



## Europe A-CDM FIXM Extension v1.0

### Conceptual Model – Reference Material

The Flight Information Exchange Model (FIXM) is an exchange model capturing Flight and Flow information that is globally standardised. It supports, like AIXM and WXXM, a “core + extension” mechanism: the core part contains the pieces of flight information that are globally recognised and which are endorsed by the FIXM CCB, while extensions supplement the core FIXM model in order to support additional requirements from particular communities of interest. *[adapted from the [FIXM Strategy v1.0](#)]* This document describes the Logical Model of the Europe Airport Collaborative Decision Making (A-CDM) Extension v1.0. It provides guidance material of the extension classes and properties. It also provides information related to the derivation classes from the FIXM core and other relationships between entities.

This document provides reference material extracted from the Europe A-CDM Extension v1.0 Conceptual Model. It contains all diagrams, organised in sections according the model packages.

The **Europe A-CDM FIXM Extension v1.0** is still a **research extension** which **shall not be used for any operational purposes**. It is delivered officially to the FIXM CCB and made publicly available on [www.FIXM.aero](http://www.FIXM.aero), so that its content can be considered for inclusion in future core FIXM versions, in accordance with the rules for governing the FIXM content described in the FIXM CCB Charter v1.0.

08-August-2014  
Version: 1.0

**Copyright (c) 2014 EUROCONTROL**

=====  
**All rights reserved.**

**Redistribution and use in source and binary forms, with or without modification, are permitted provided that the following conditions are met:**

**\* Redistributions of source code must retain the above copyright notice, this list of conditions and the disclaimer.**

**\* Redistributions in binary form must reproduce the above copyright notice, this list of conditions and the disclaimer in the documentation and/or other materials provided with the distribution.**

**\* Neither the names of EUROCONTROL nor the names of their contributors may be used to endorse or promote products derived from this specification without specific prior written permission.**

**DISCLAIMER**

**THIS SPECIFICATION IS PROVIDED BY THE COPYRIGHT HOLDERS AND CONTRIBUTORS "AS IS" AND ANY EXPRESS OR IMPLIED WARRANTIES, INCLUDING, BUT NOT LIMITED TO, THE IMPLIED WARRANTIES OF MERCHANTABILITY AND FITNESS FOR A PARTICULAR PURPOSE ARE DISCLAIMED. IN NO EVENT SHALL THE COPYRIGHT OWNER OR CONTRIBUTORS BE LIABLE FOR ANY DIRECT, INDIRECT, INCIDENTAL, SPECIAL, EXEMPLARY, OR CONSEQUENTIAL DAMAGES (INCLUDING, BUT NOT LIMITED TO, PROCUREMENT OF SUBSTITUTE GOODS OR SERVICES; LOSS OF USE, DATA, OR PROFITS; OR BUSINESS INTERRUPTION) HOWEVER CAUSED AND ON ANY THEORY OF LIABILITY, WHETHER IN CONTRACT, STRICT LIABILITY, OR TORT (INCLUDING NEGLIGENCE OR OTHERWISE) ARISING IN ANY WAY OUT OF THE USE OF THIS SOFTWARE, EVEN IF ADVISED OF THE POSSIBILITY OF SUCH DAMAGE.**

=====  
**Editorial note: this license is an instance of the BSD license template as provided by the Open Source Initiative:**

**<http://www.opensource.org/licenses/bsd-license.php>**

**Details on EUROCONTROL: <http://www.eurocontrol.int/>**

## Table of Contents

<b>Conceptual Model</b> .....	<b>5</b>
A-CDM Introduction .....	5
A-CDM Overview .....	6
A-CDM DateTimes Overview .....	7
A-CDM Durations Overview .....	10
AirTrafficOperations .....	11
AirportOperations .....	11
A-CDMAAlerts .....	11
AirportTransitView.....	12
Deicing .....	13
Deicing .....	13
DeicingTimes.....	14
Turnaround .....	15
Turnaround .....	15
Boarding.....	16
GroundHandling .....	17
OffBlockReady .....	18
StartupApproval .....	19
TurnaroundTime .....	20
ArrivalOperations .....	21
Arrival.....	21
InBlock.....	22
DepartureOperations .....	23
Departure.....	23
OffBlock.....	24
Aircraft.....	25
BaseInfrastructure .....	26
Aerodrome .....	26
Aerodrome.....	26
Aerodrome Overview.....	27
AircraftStand .....	28
Apron .....	29
Designators .....	30
AerodromeDesignator .....	30
Runway .....	31
TerminalAndGate.....	32
Flight .....	33
FlightIdentifier.....	33
Flight Identifiers .....	33
IATAUniqueFlightIdentifier .....	34
ICAOFlightID.....	35
IFPLIdentifier.....	36
FlightPhases.....	37
FlightPhases .....	37
Landing.....	38

TakeOff.....	39
TaxiIn.....	40
TaxiOut.....	41
StakeholderAndActivities .....	42
Organisation.....	42
Airline.....	42
<b>References.....</b>	<b>43</b>

## Document History

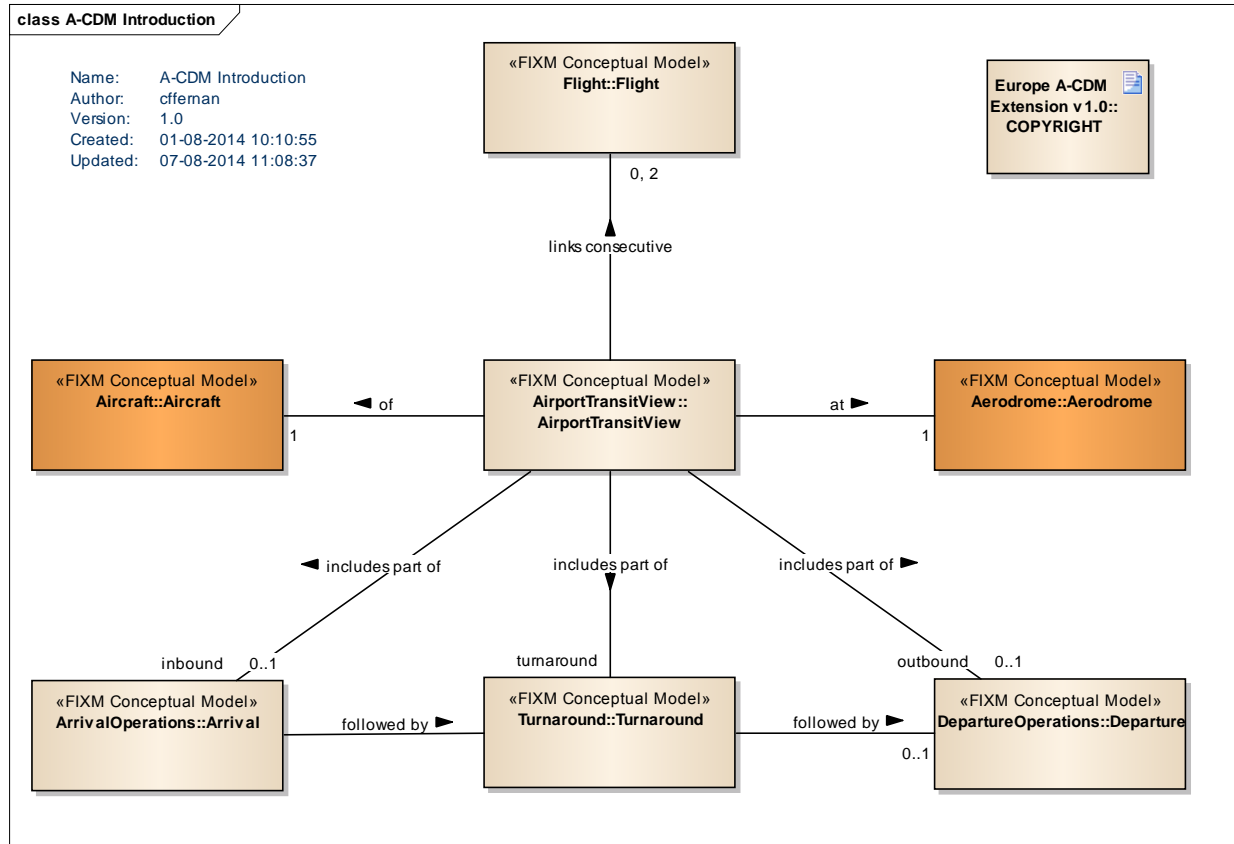
Version	Version Type	Author	Description of Changes
1.0	Final	Carlos Fornas, EUROCONTROL	First version of the document

## Intellectual Property Rights (foreground)

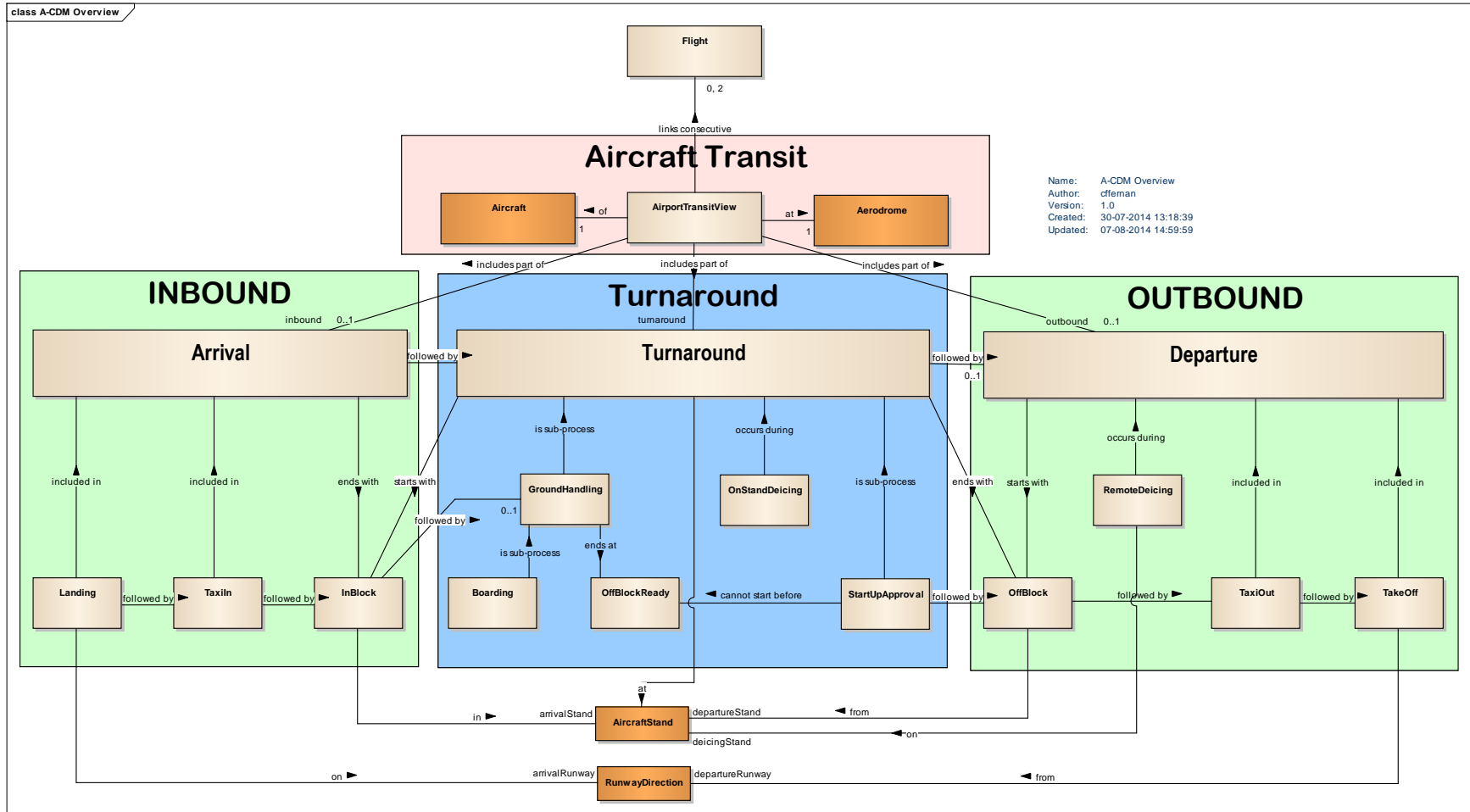
This document consists of EUROCONTROL foreground. It is made available subject to the BSD license found on the front page of the document.

# Conceptual Model

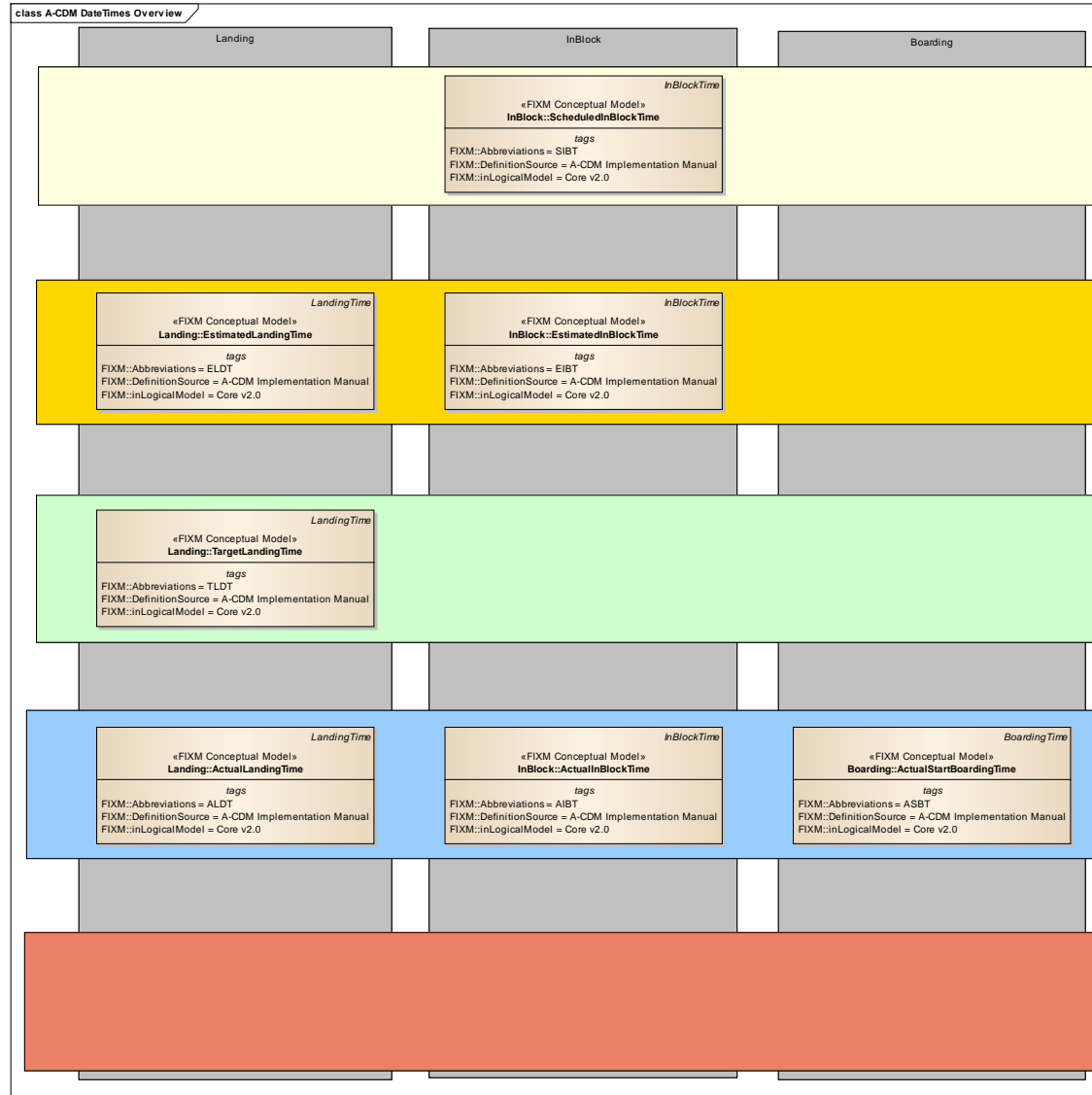
## A-CDM Introduction

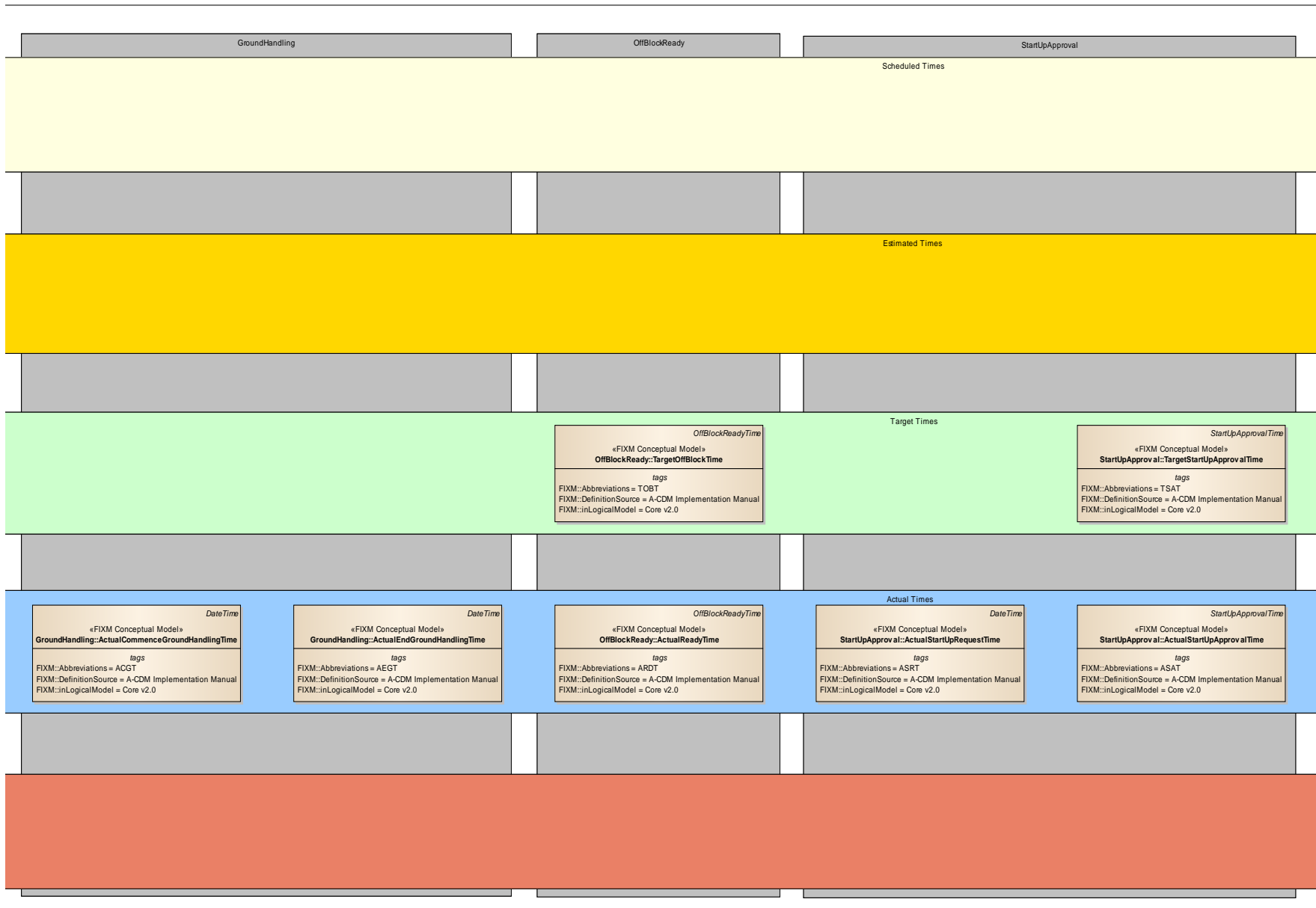


# A-CDM Overview

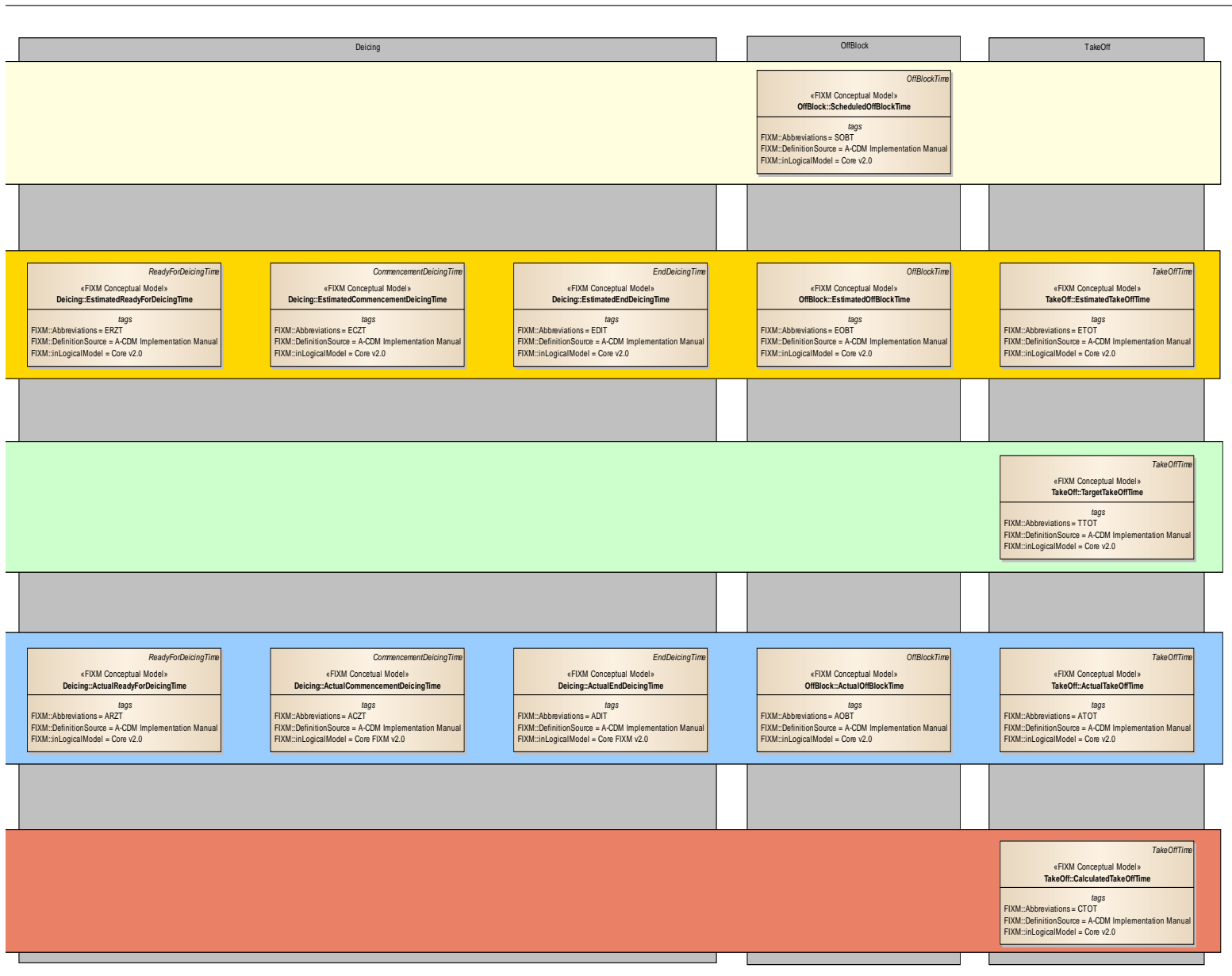


# A-CDM DateTimes Overview

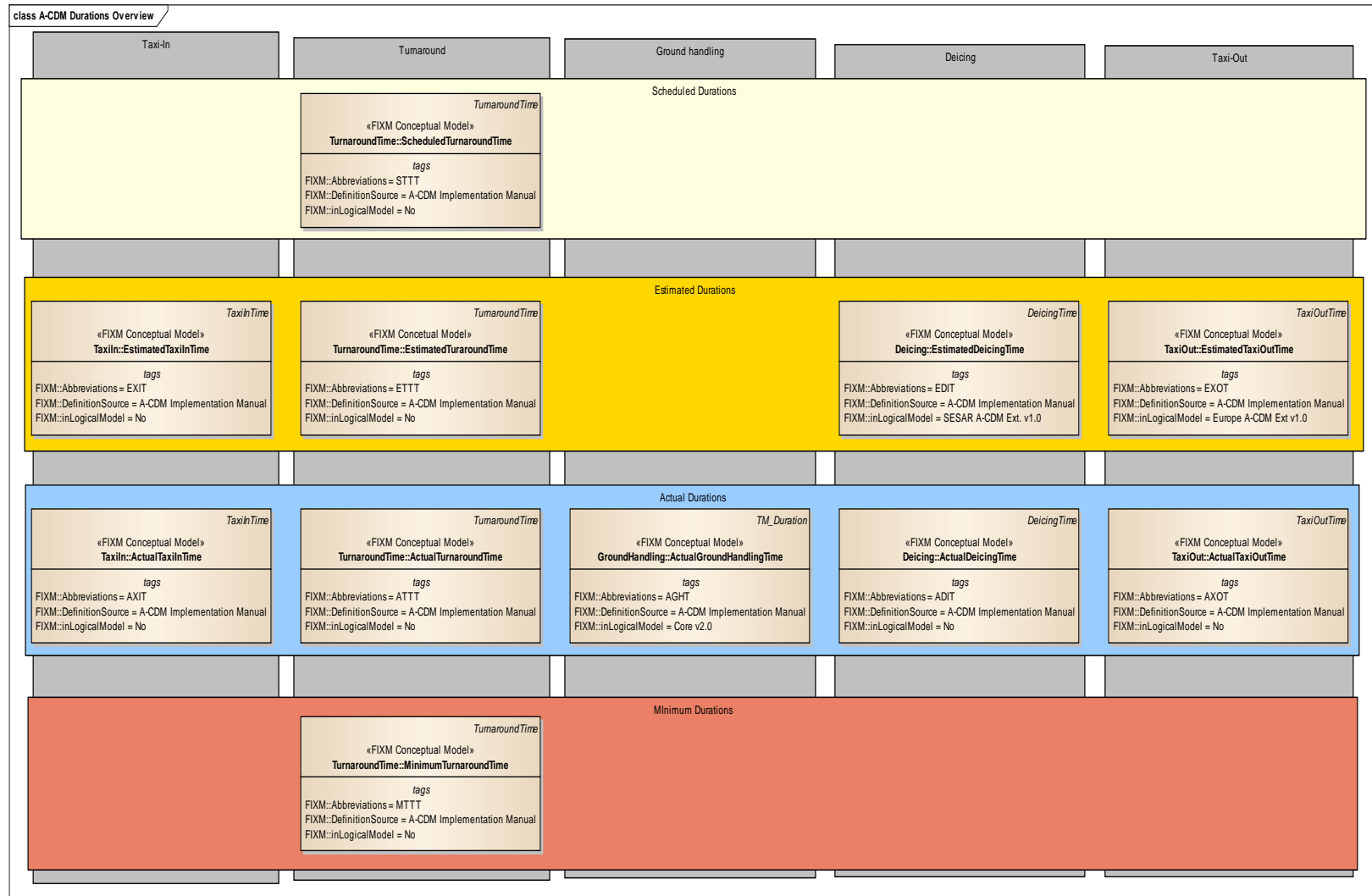






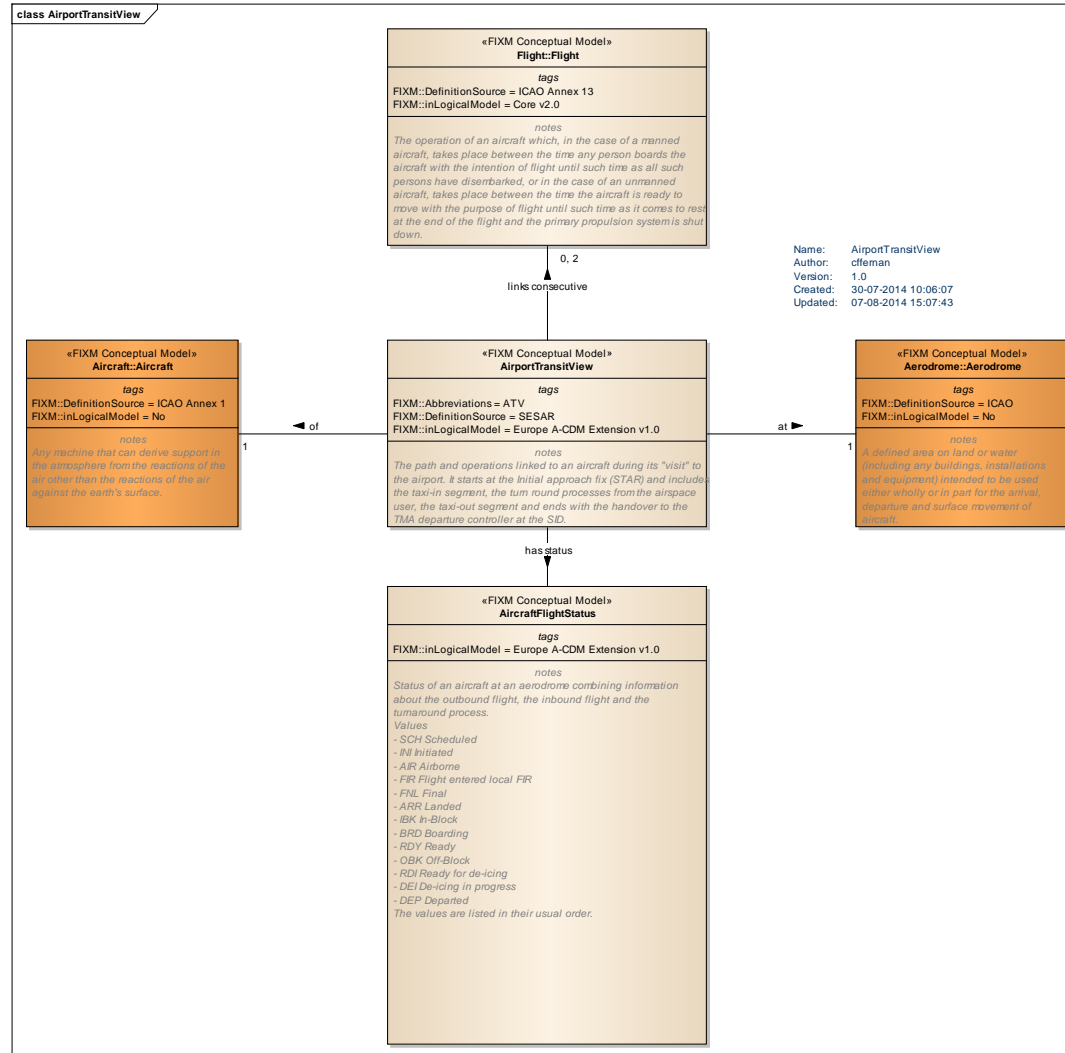


## A-CDM Durations Overview



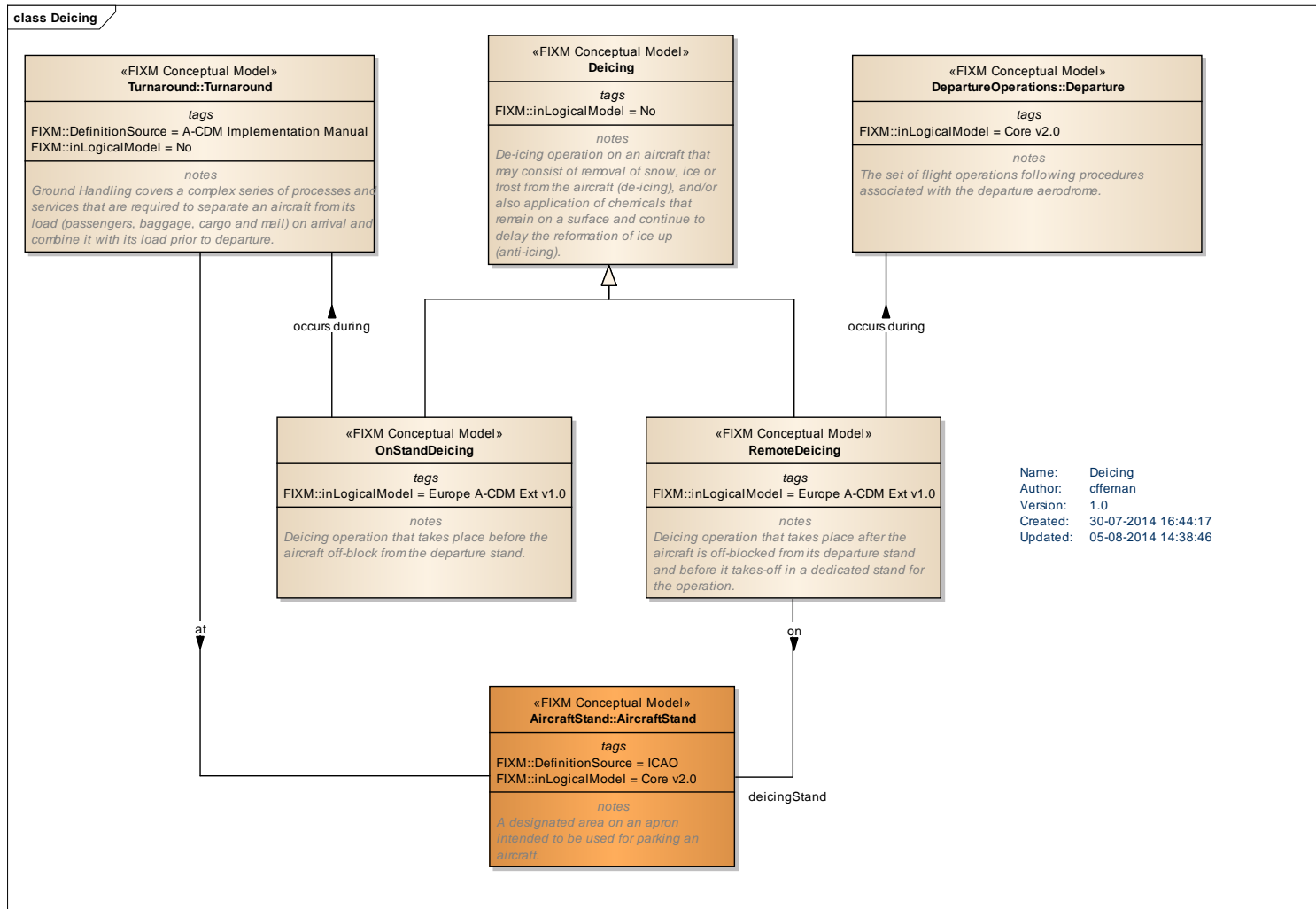


# AirportTransitView

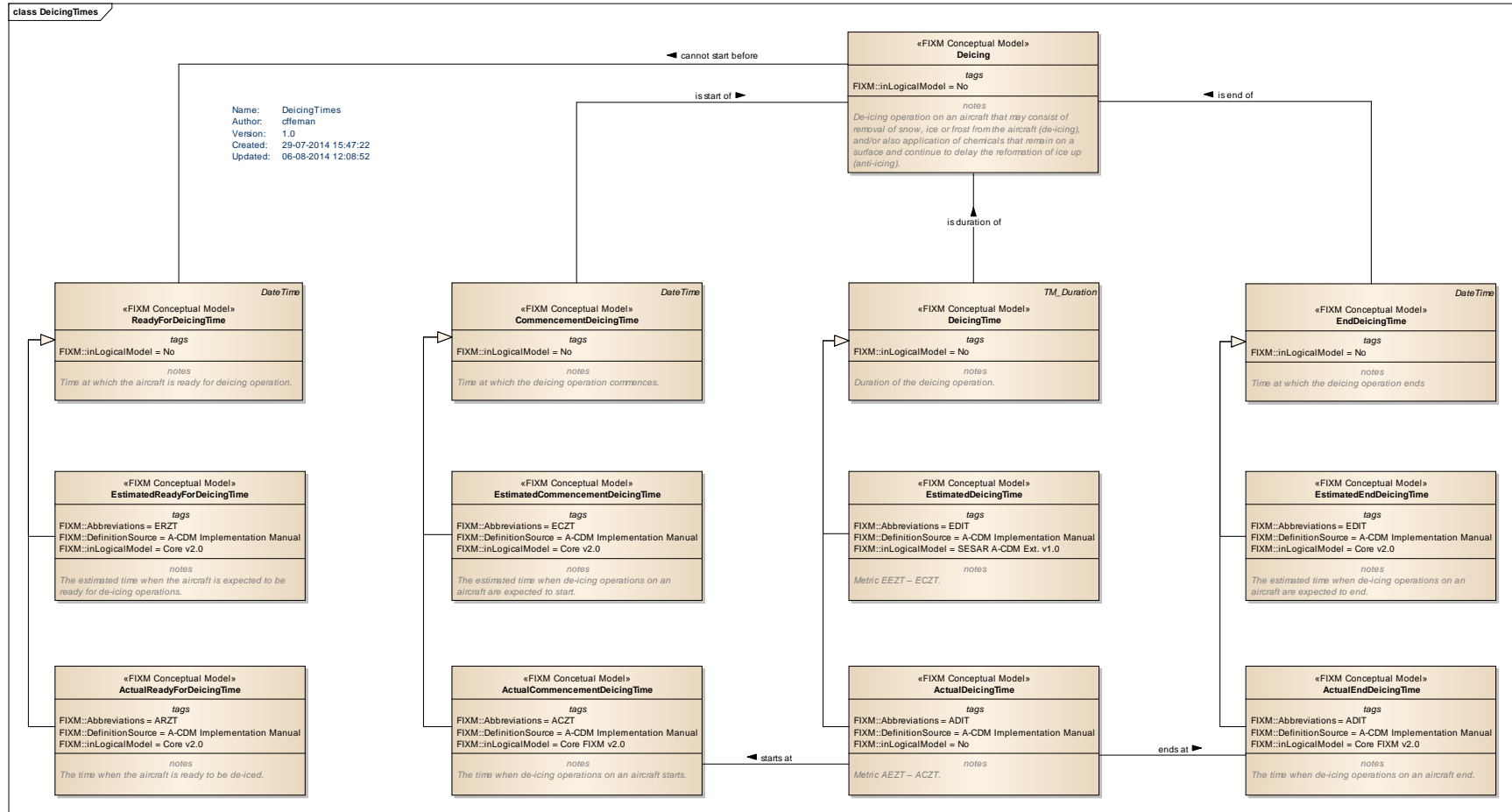


# Deicing

## Deicing

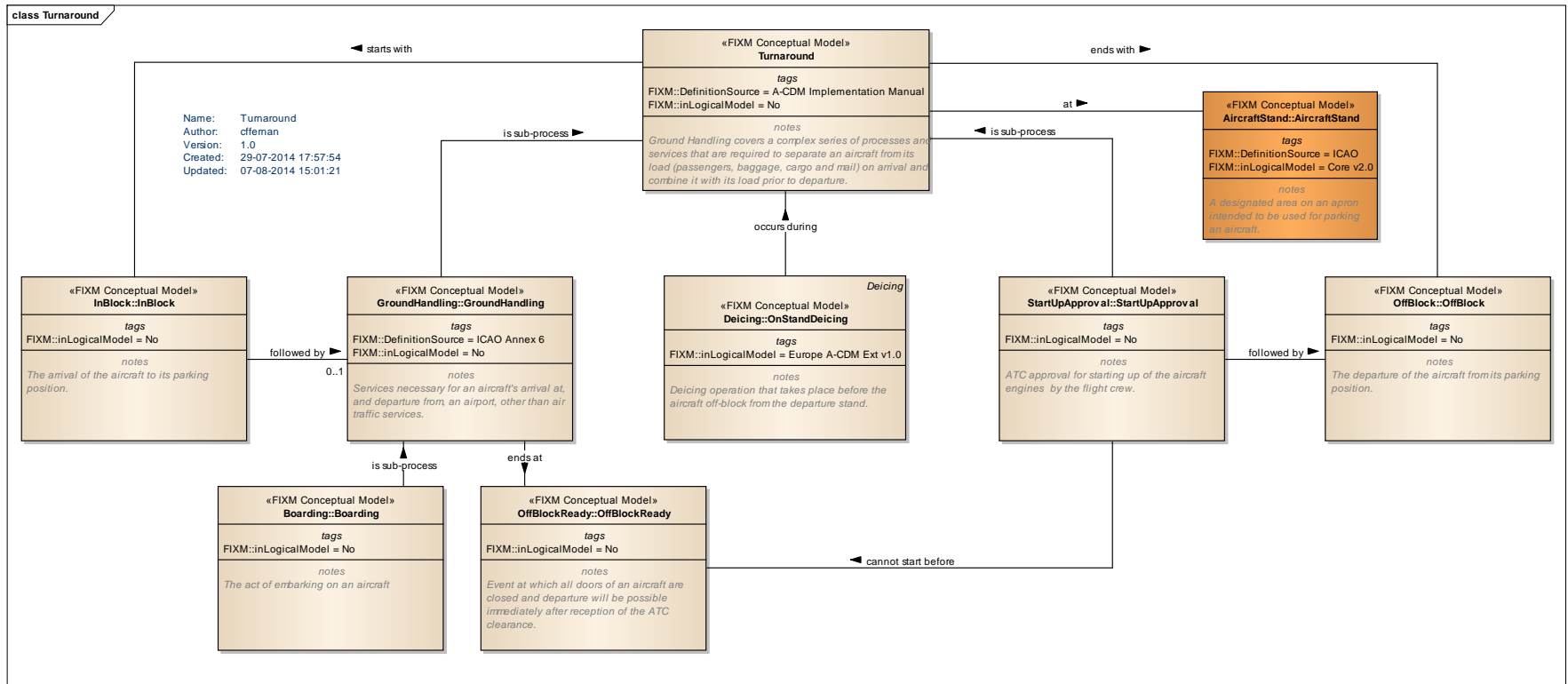


# DeicingTimes

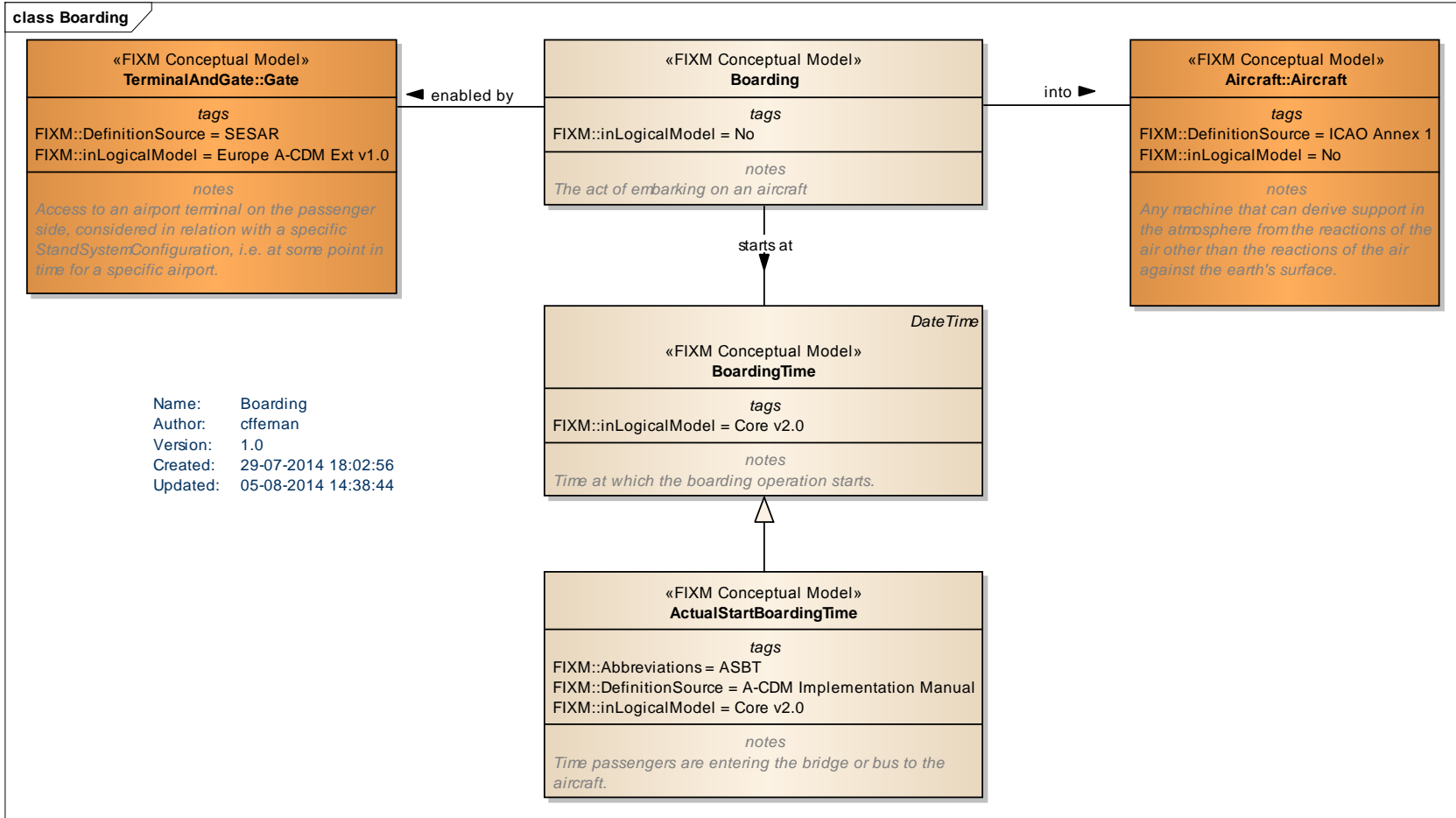


# Turnaround

# Turnaround

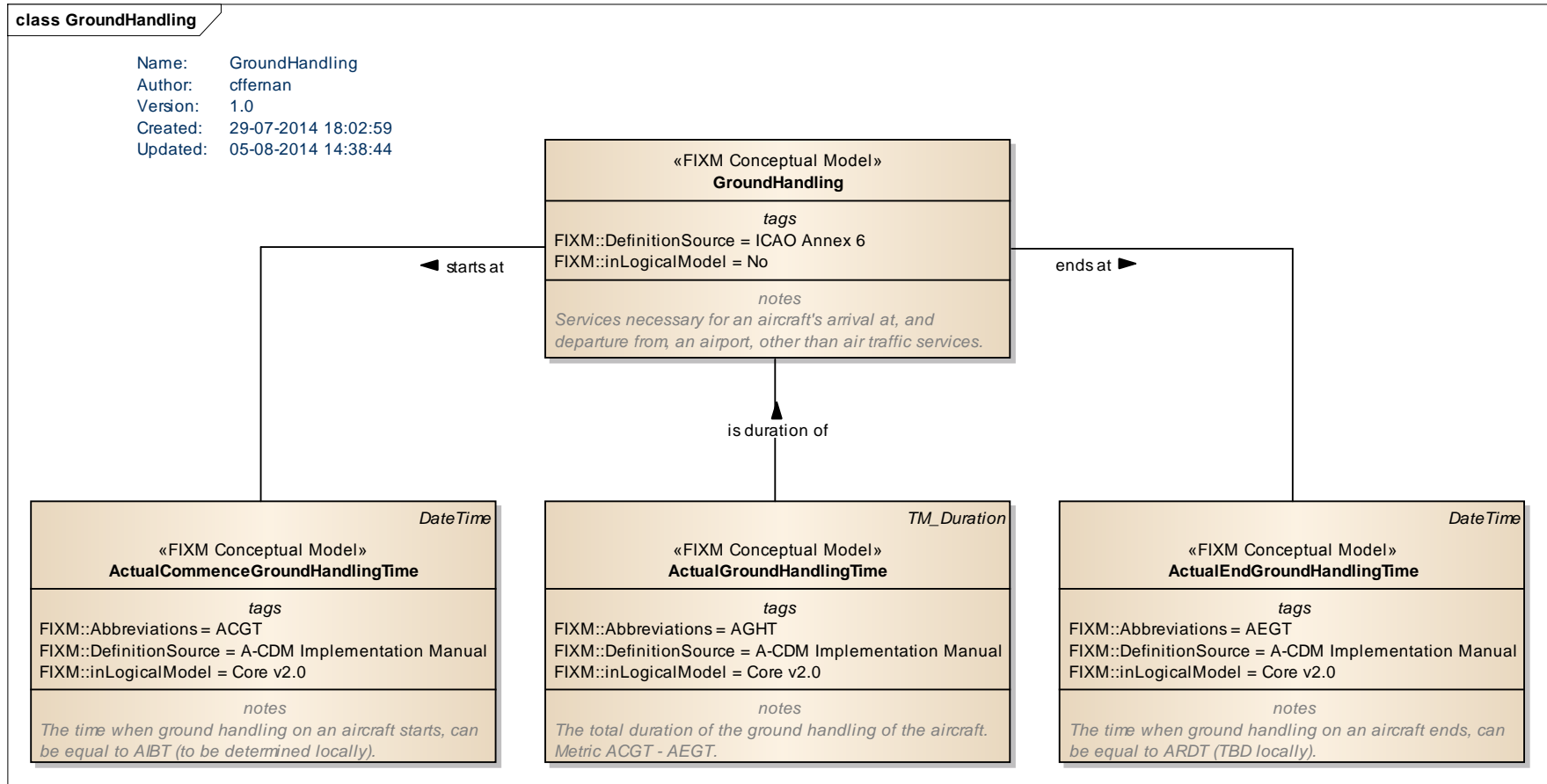


# Boarding

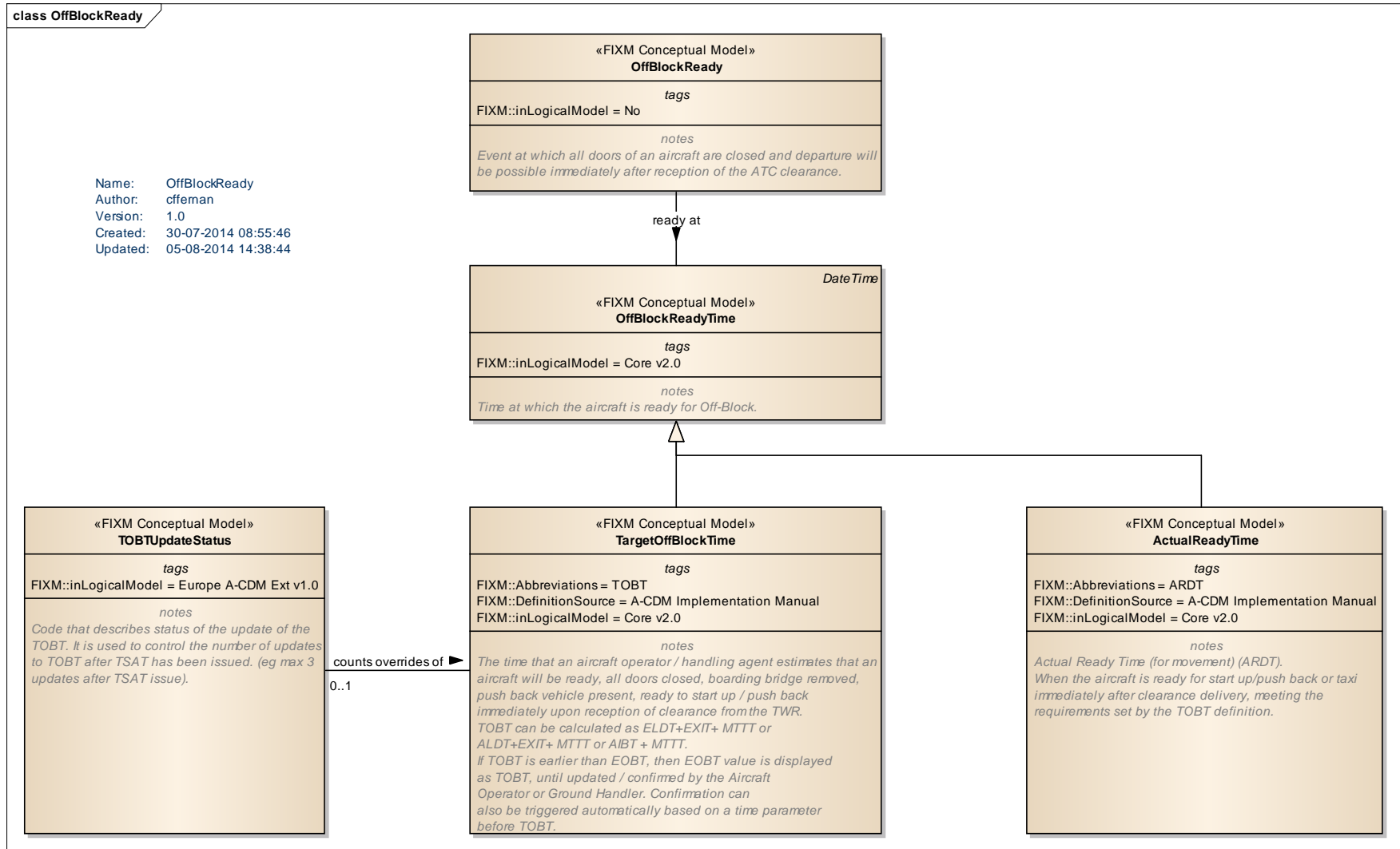




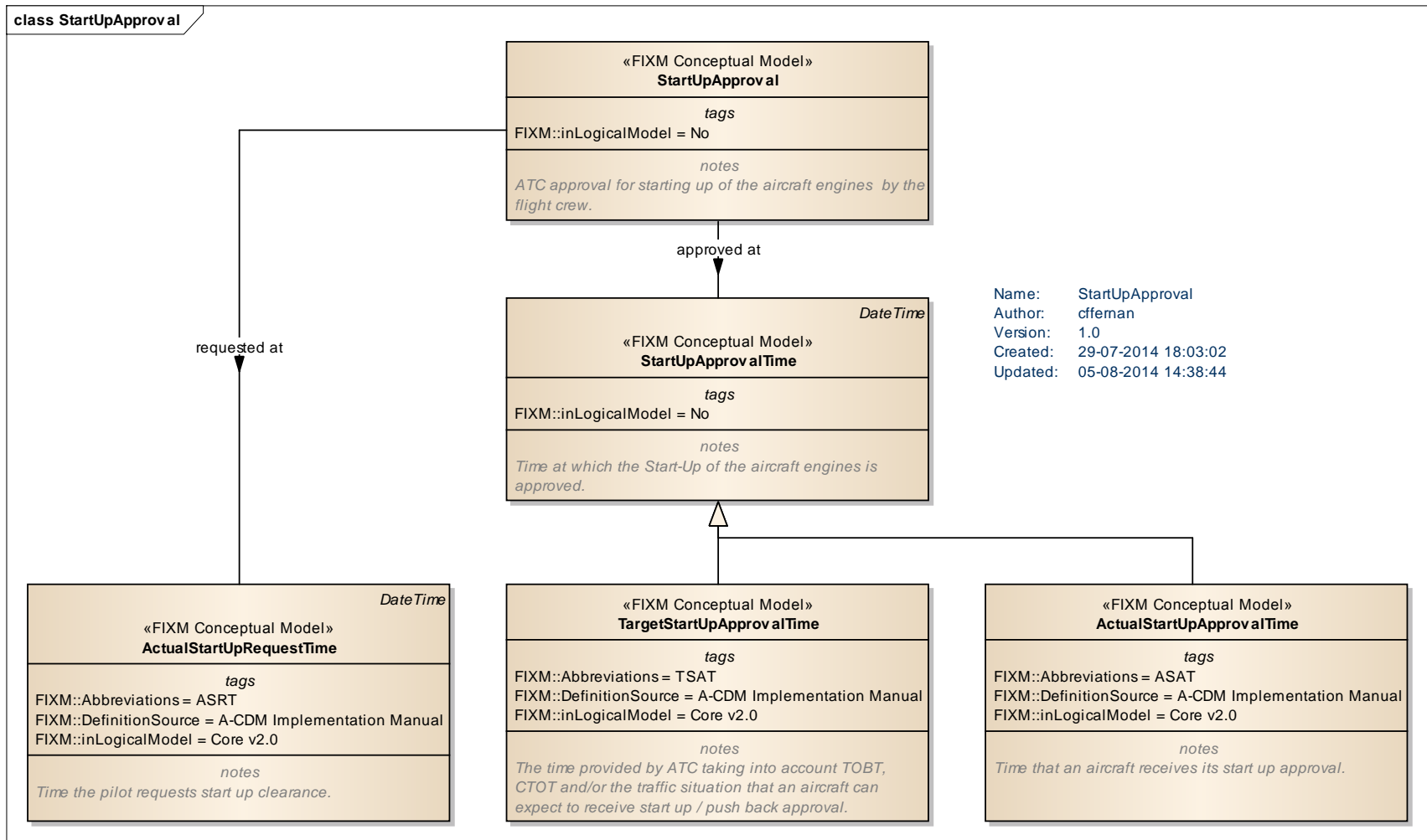
# GroundHandling



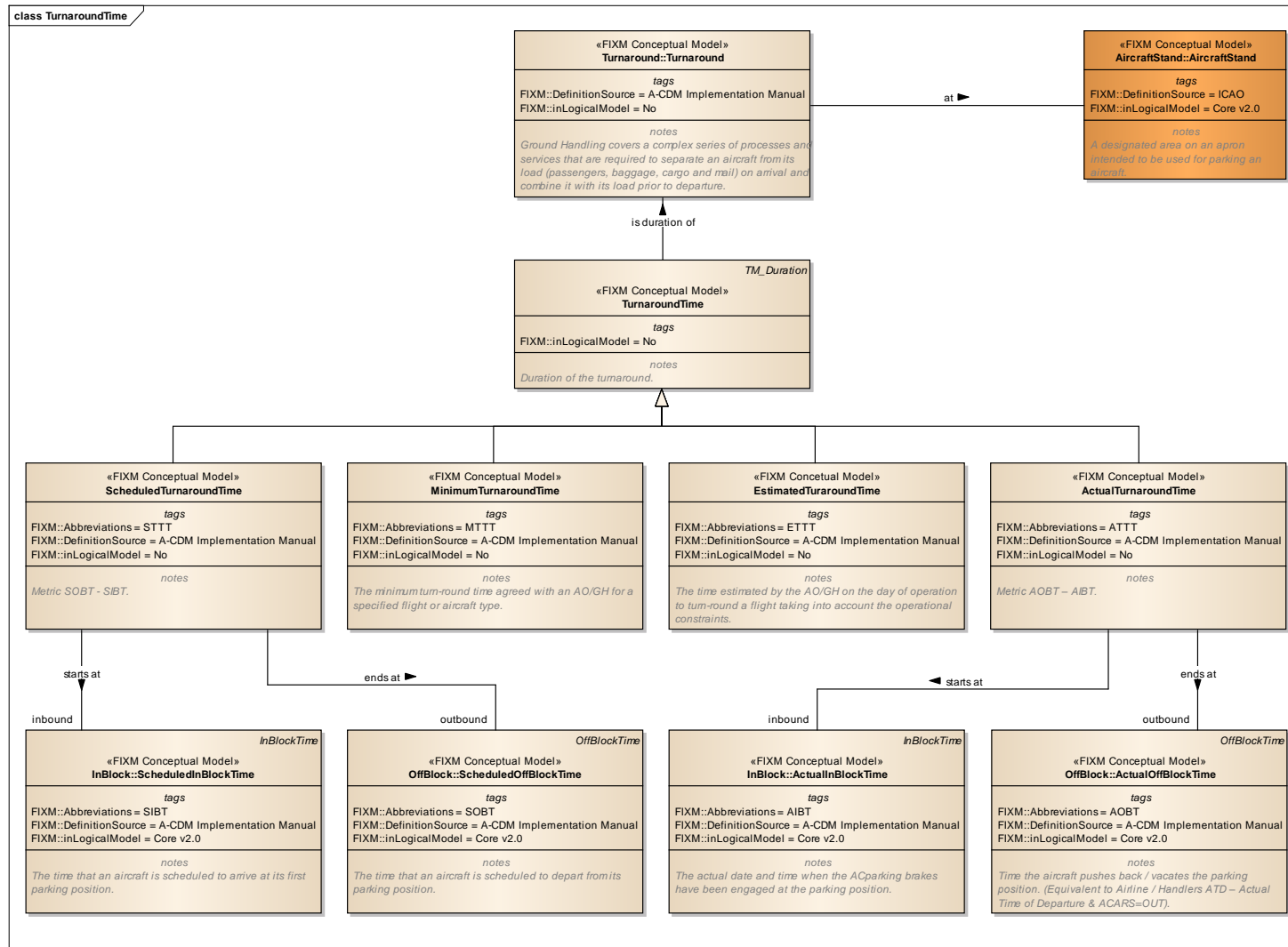
# OffBlockReady



# StartupApproval

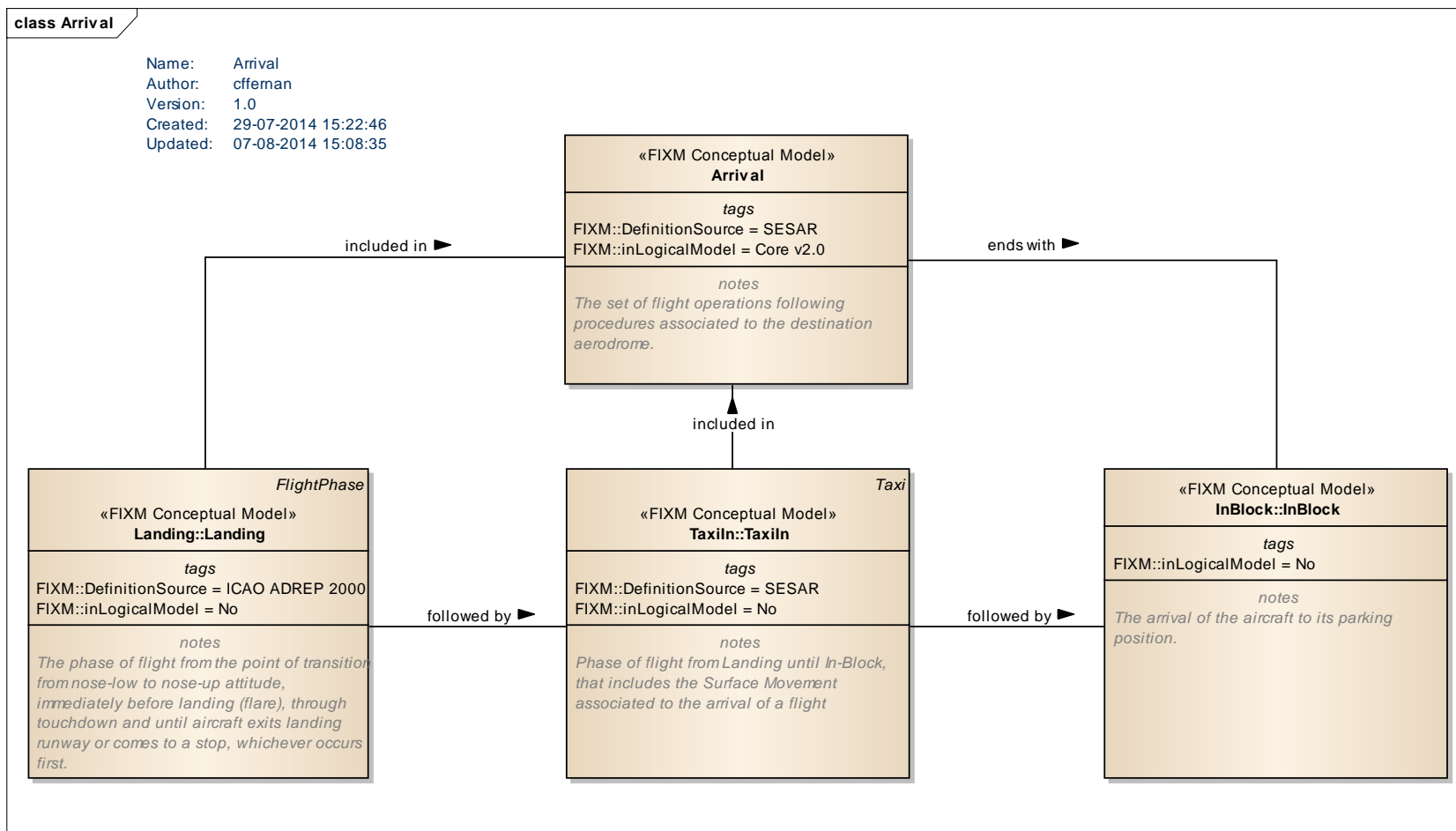


# TurnaroundTime

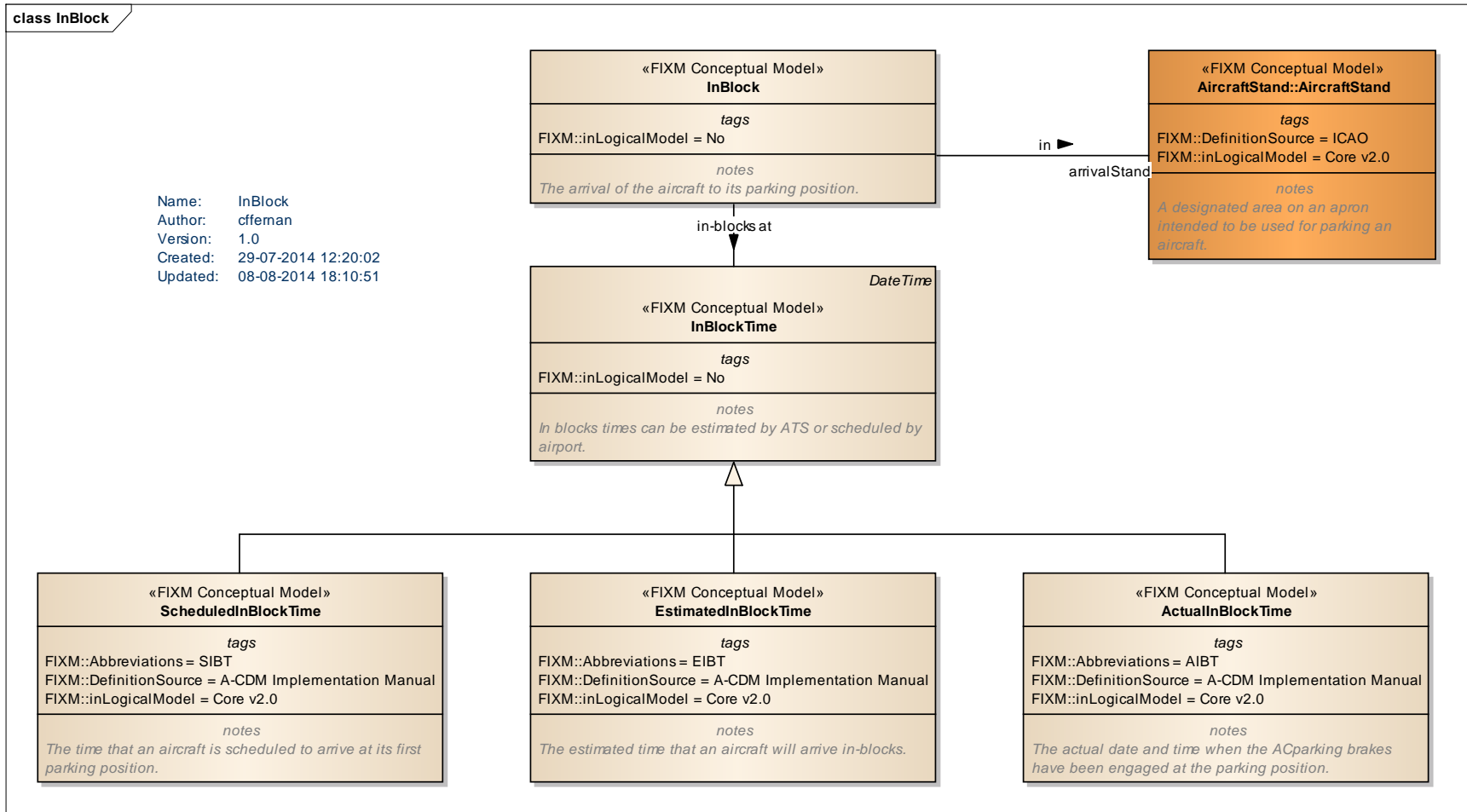


# ArrivalOperations

## Arrival

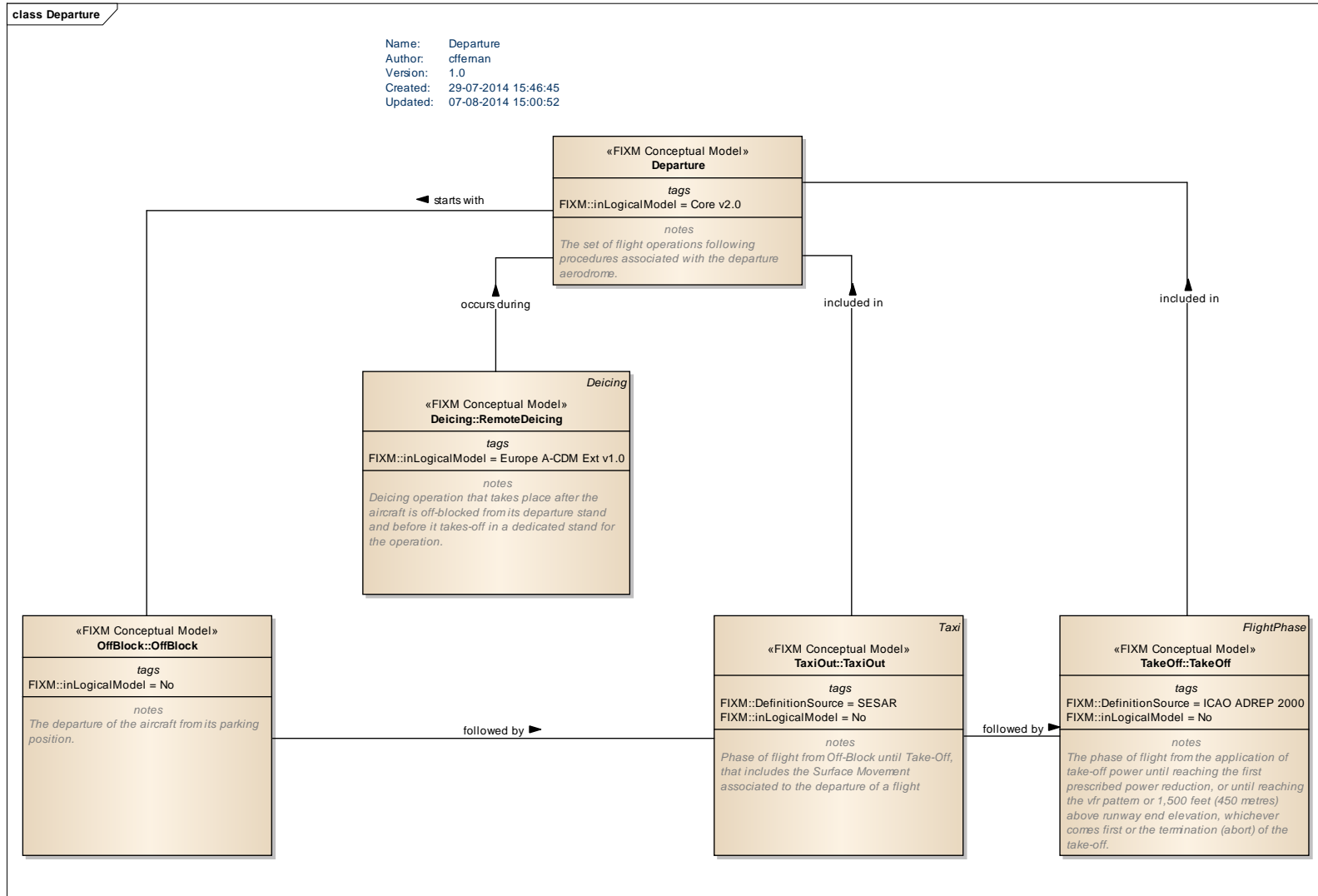


# InBlock

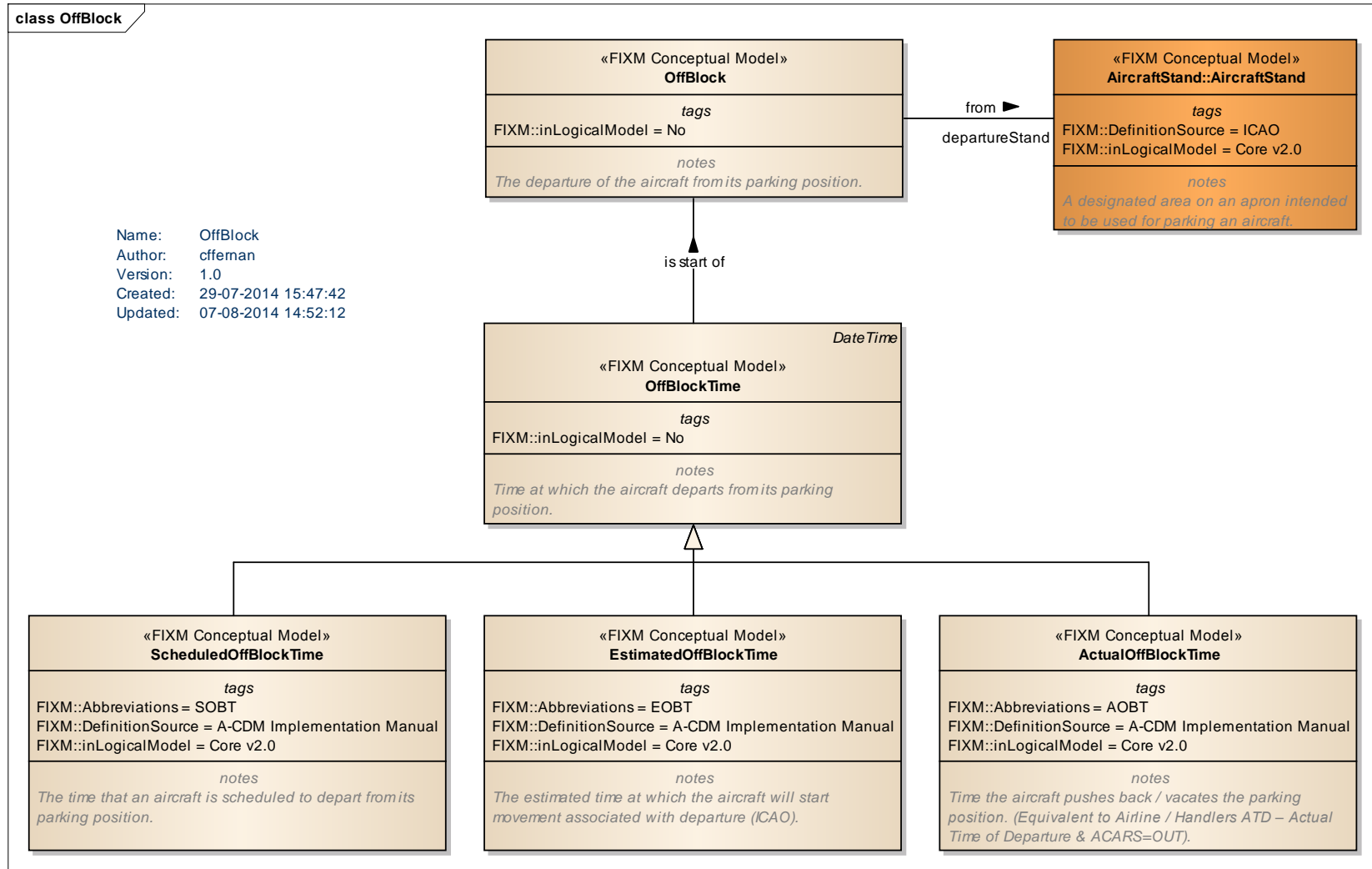


# DepartureOperations

## Departure

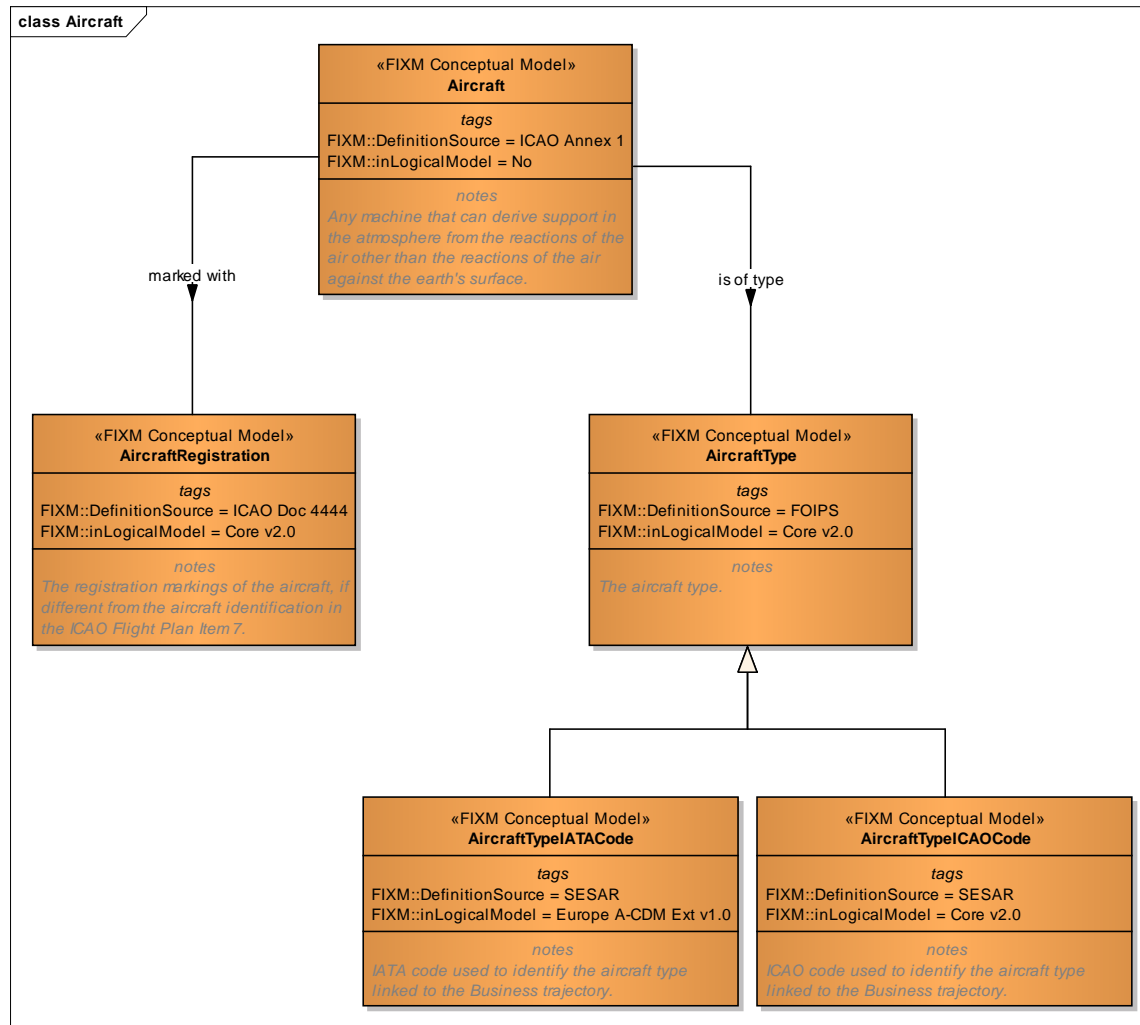


# OffBlock





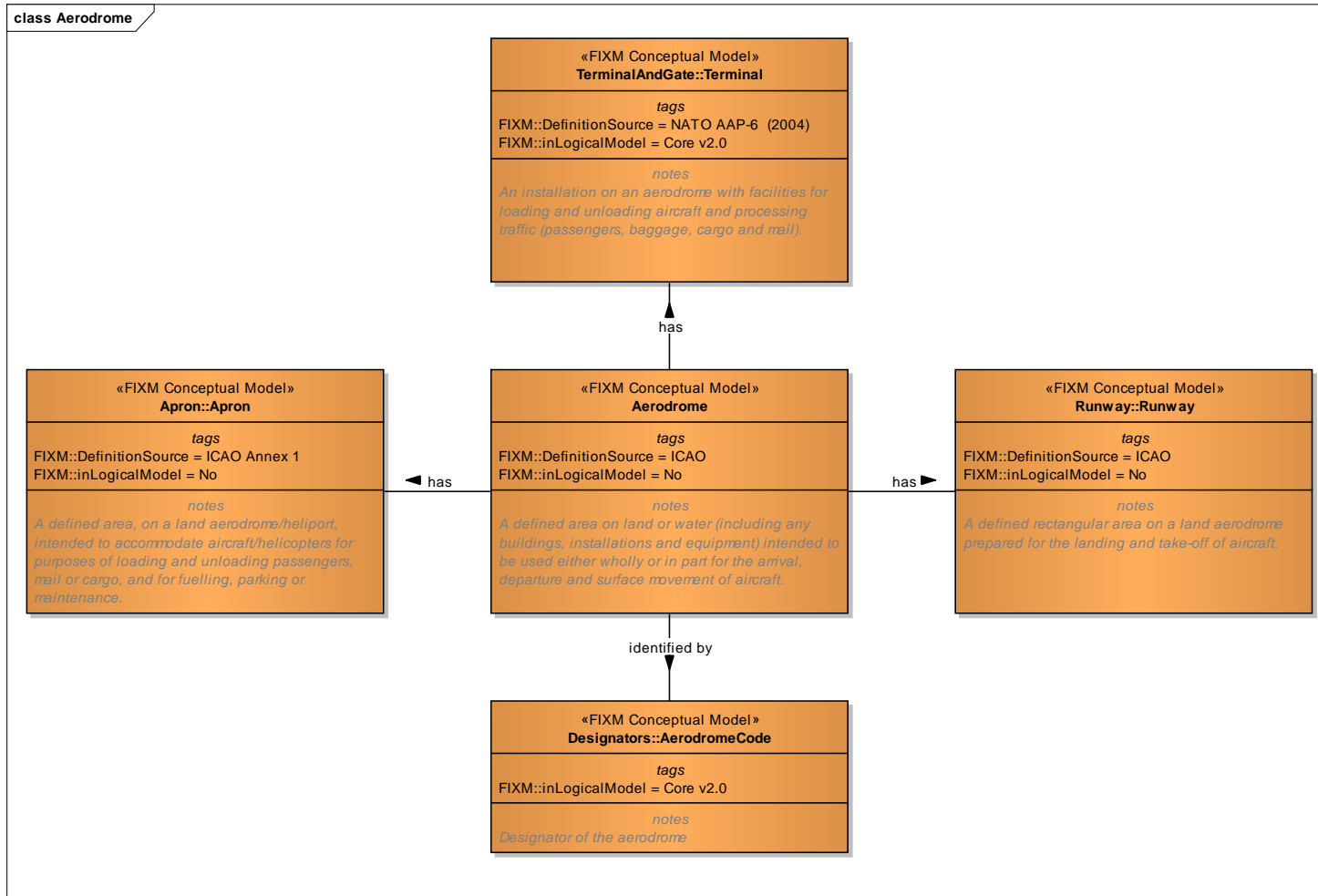
# Aircraft



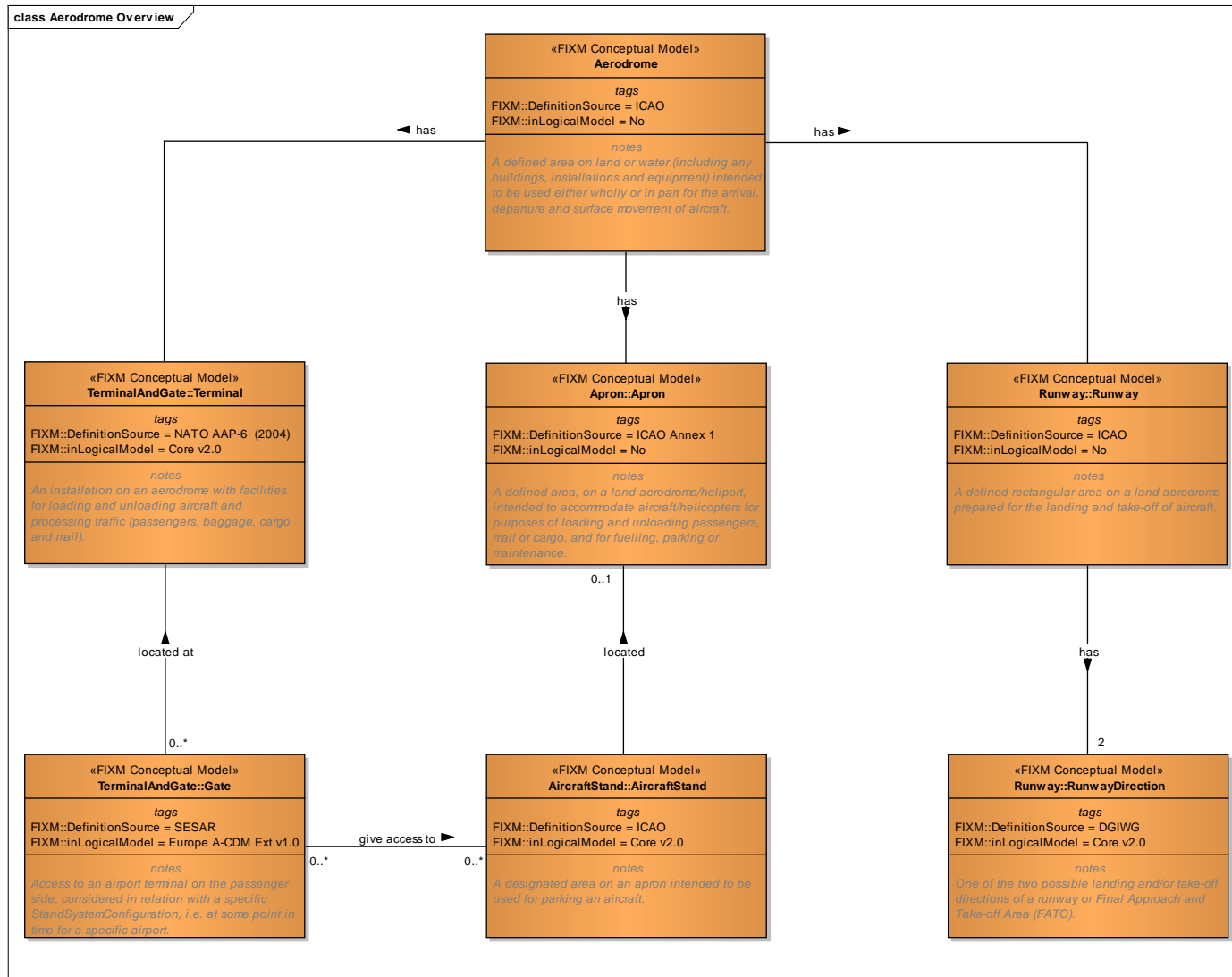
# BaseInfrastructure

## Aerodrome

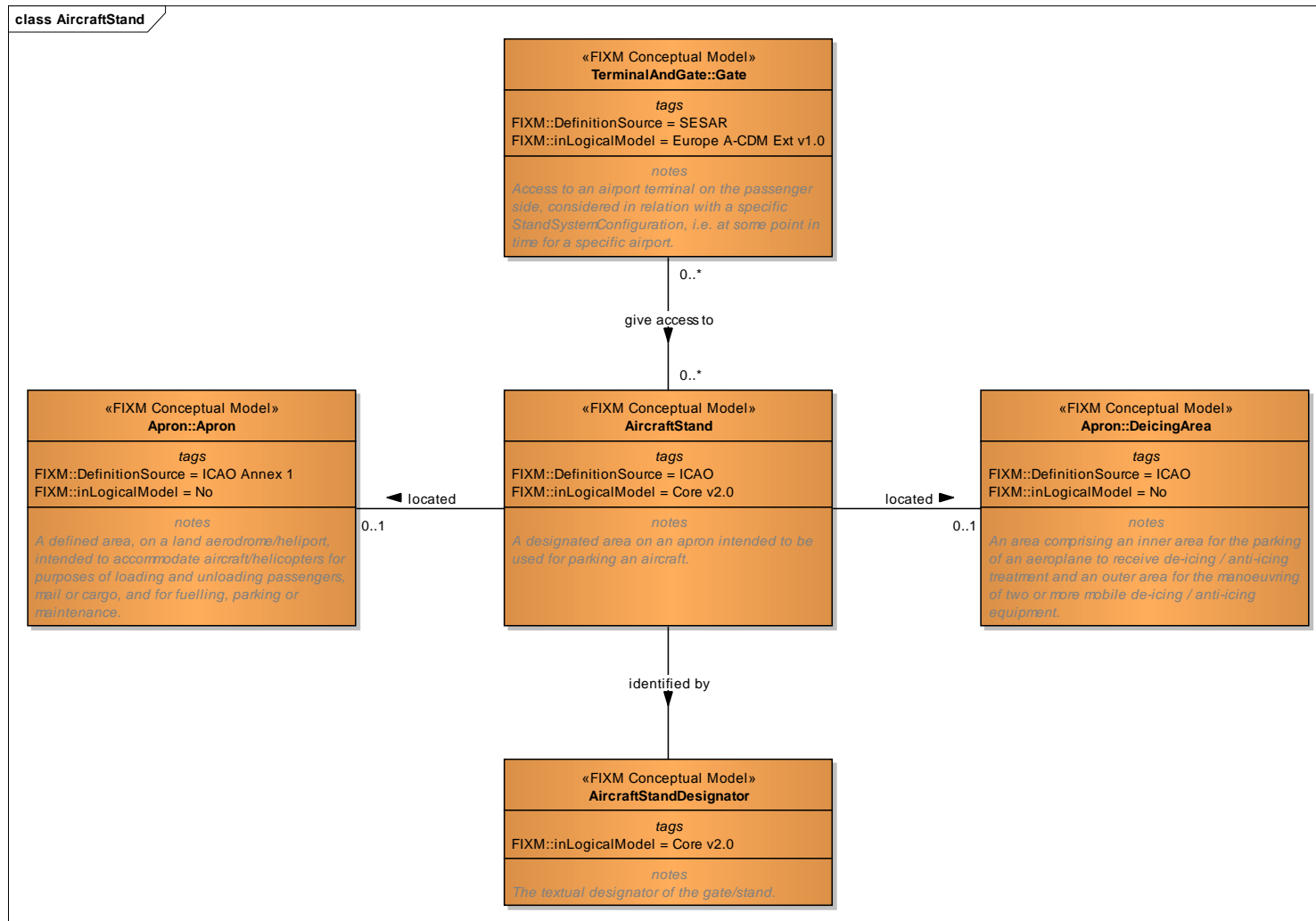
## Aerodrome



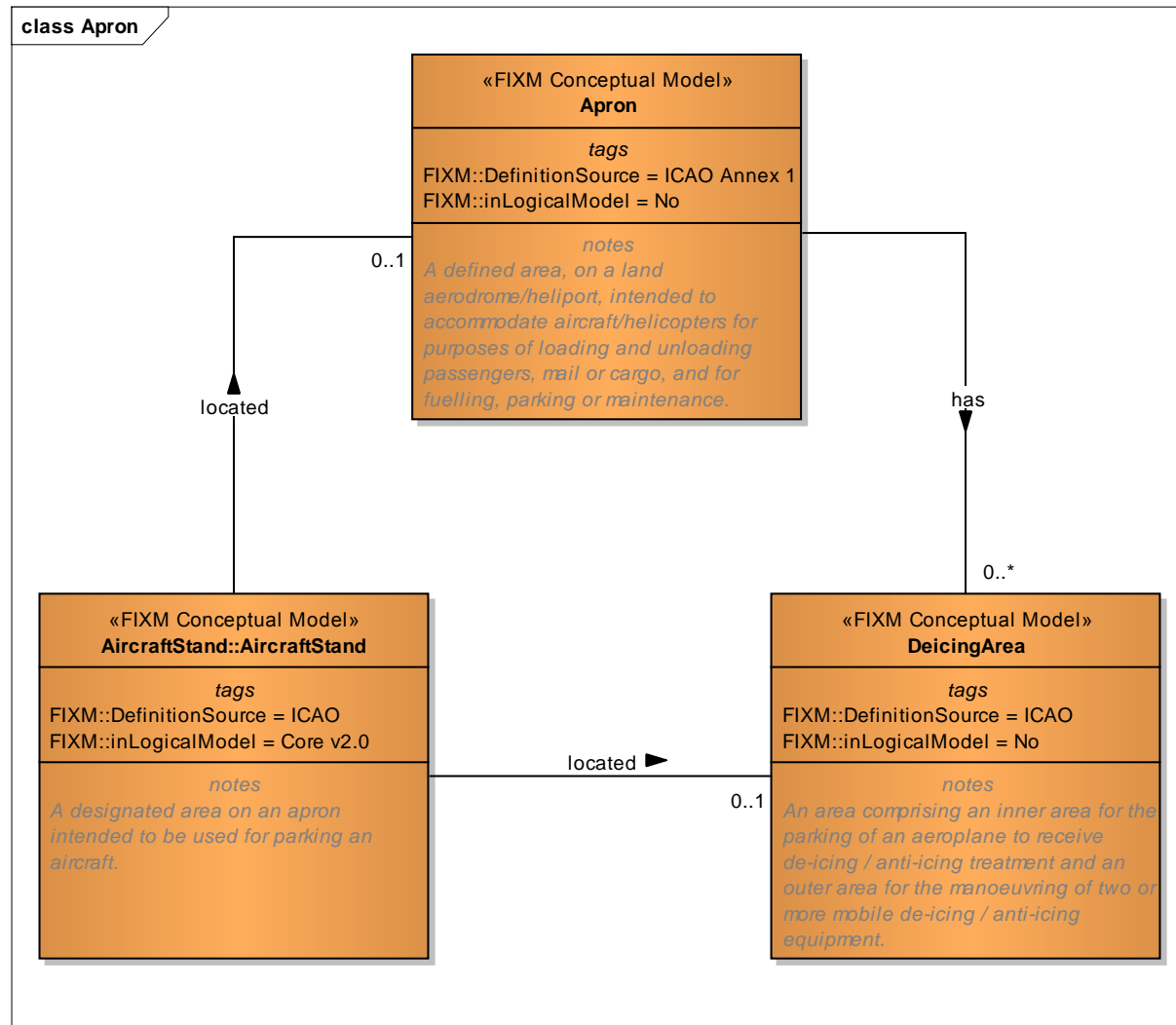
# Aerodrome Overview



# AircraftStand

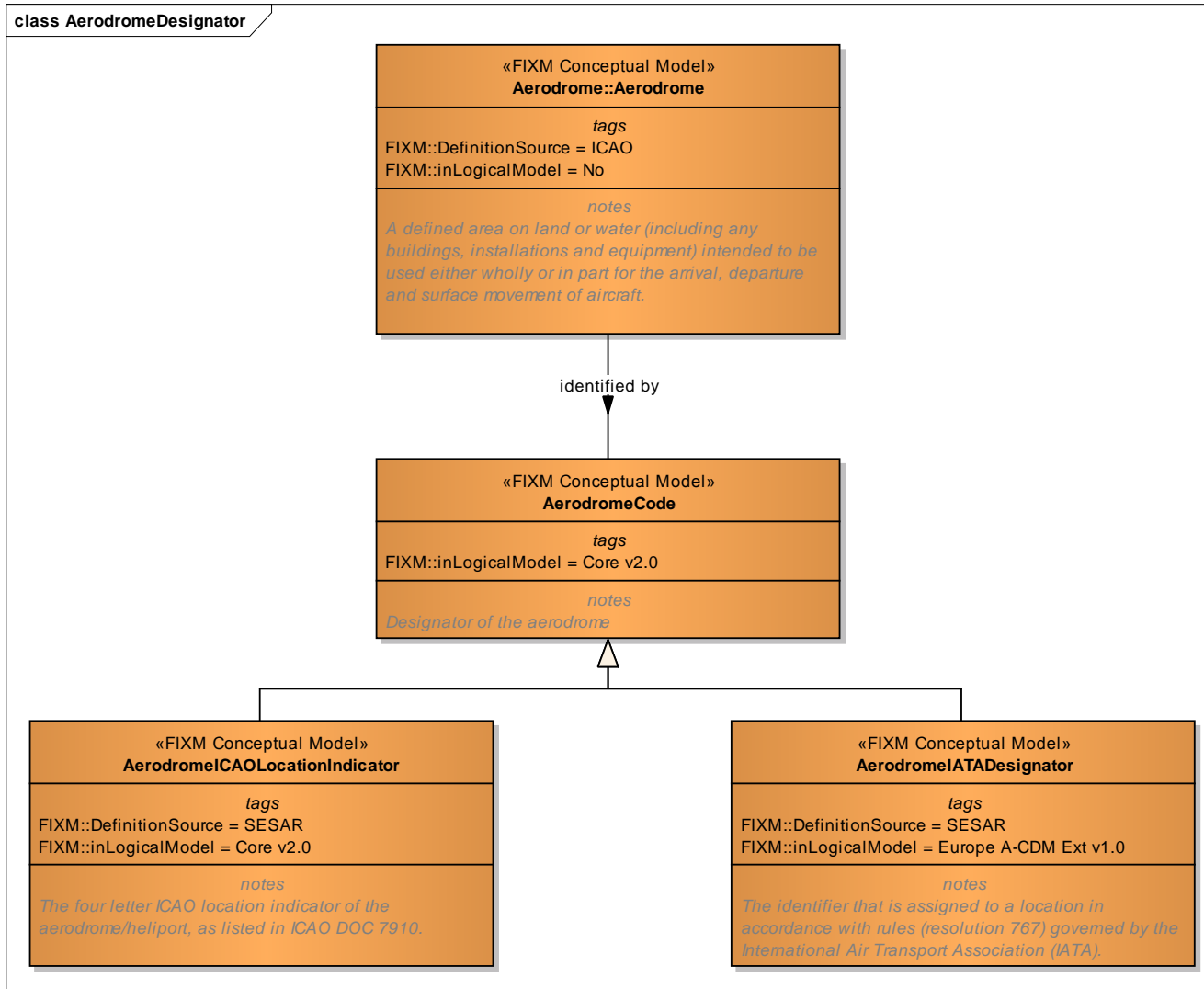


# Apron

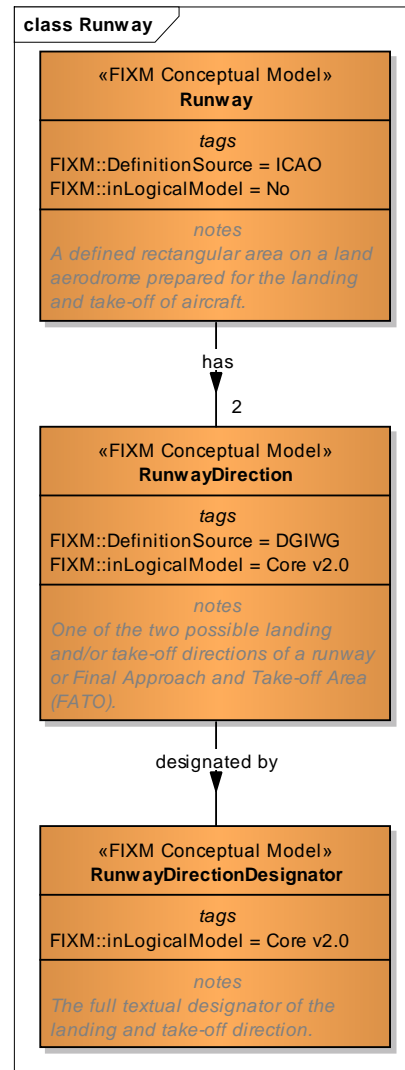


# Designators

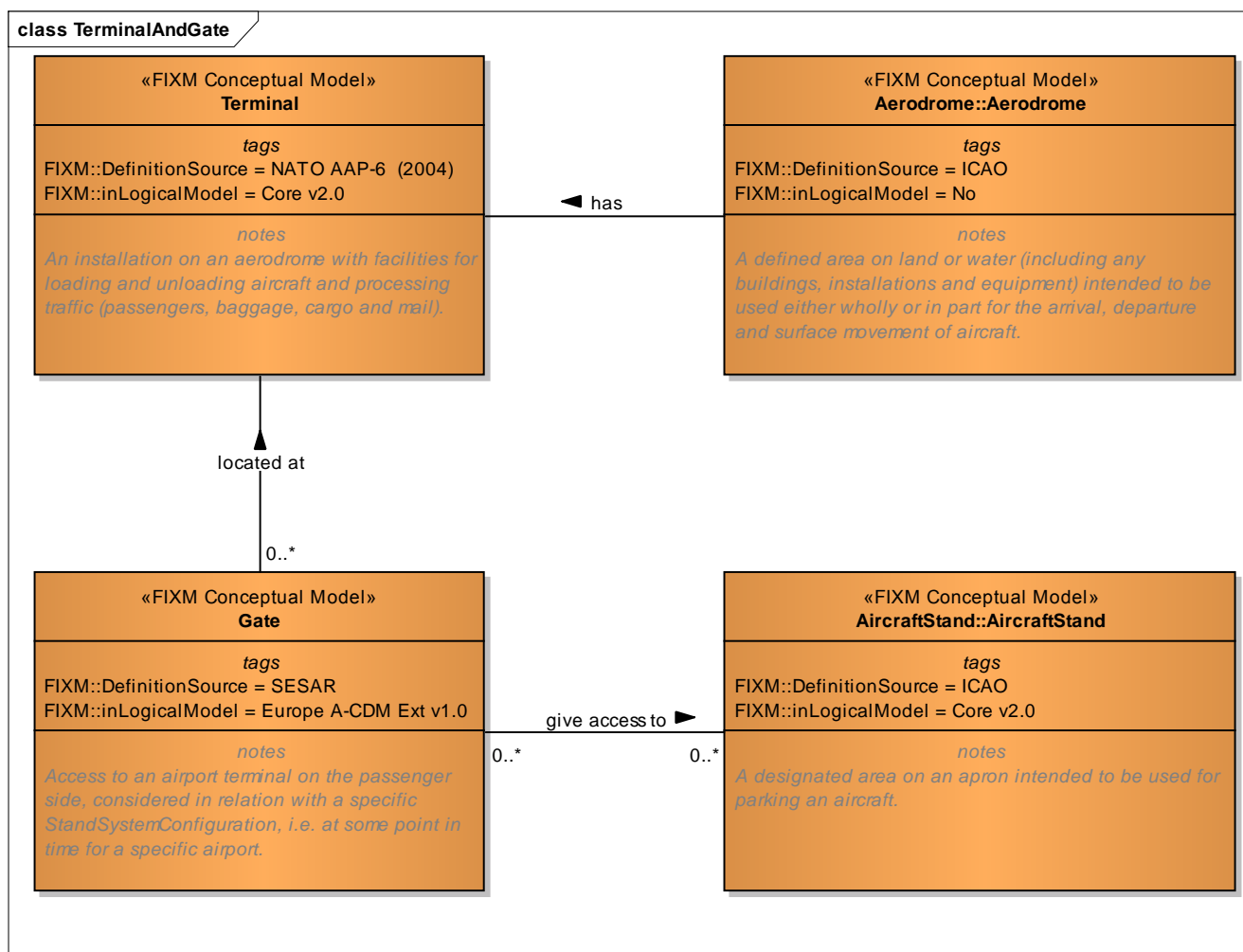
## AerodromeDesignator



# Runway



## TerminalAndGate

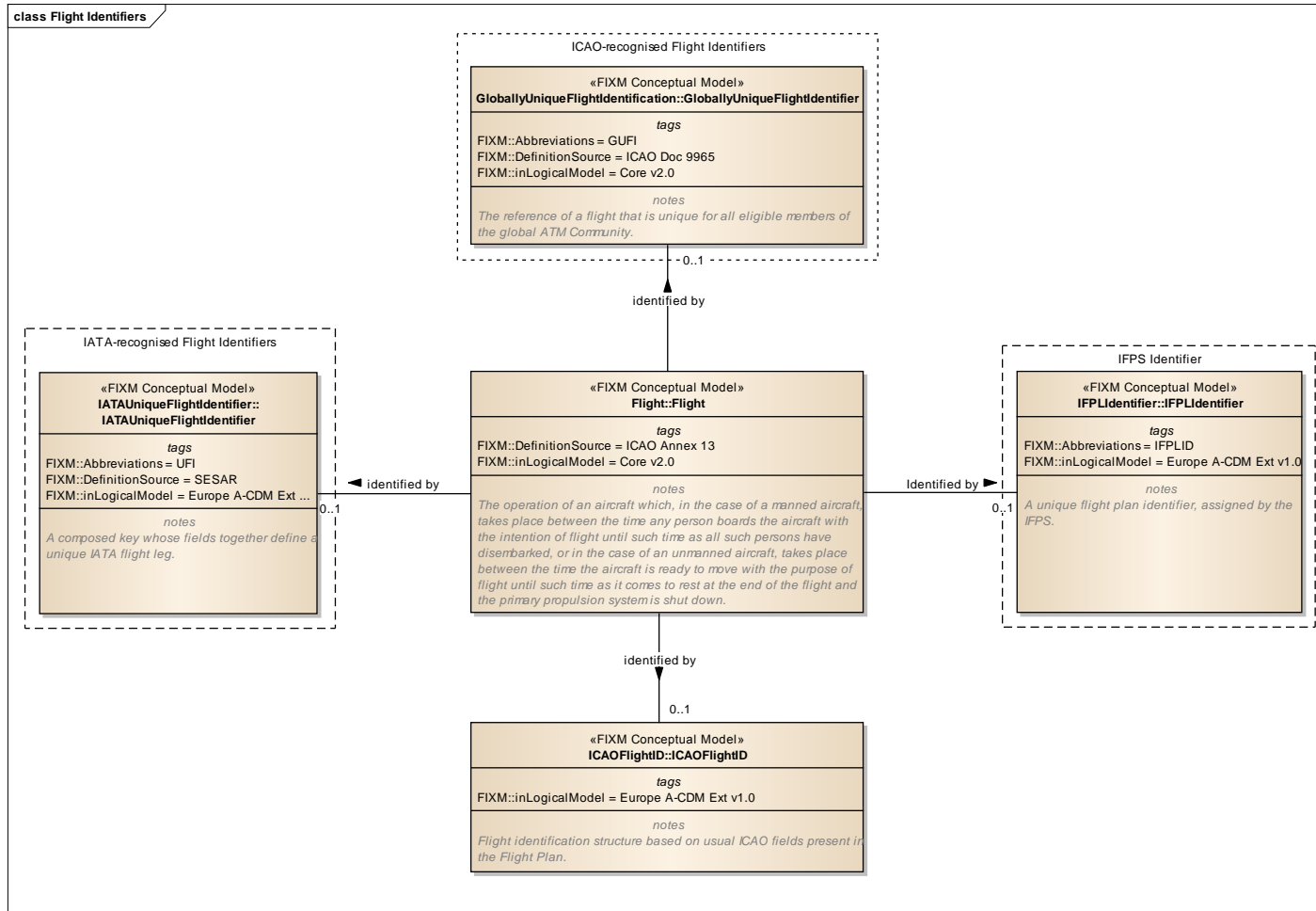




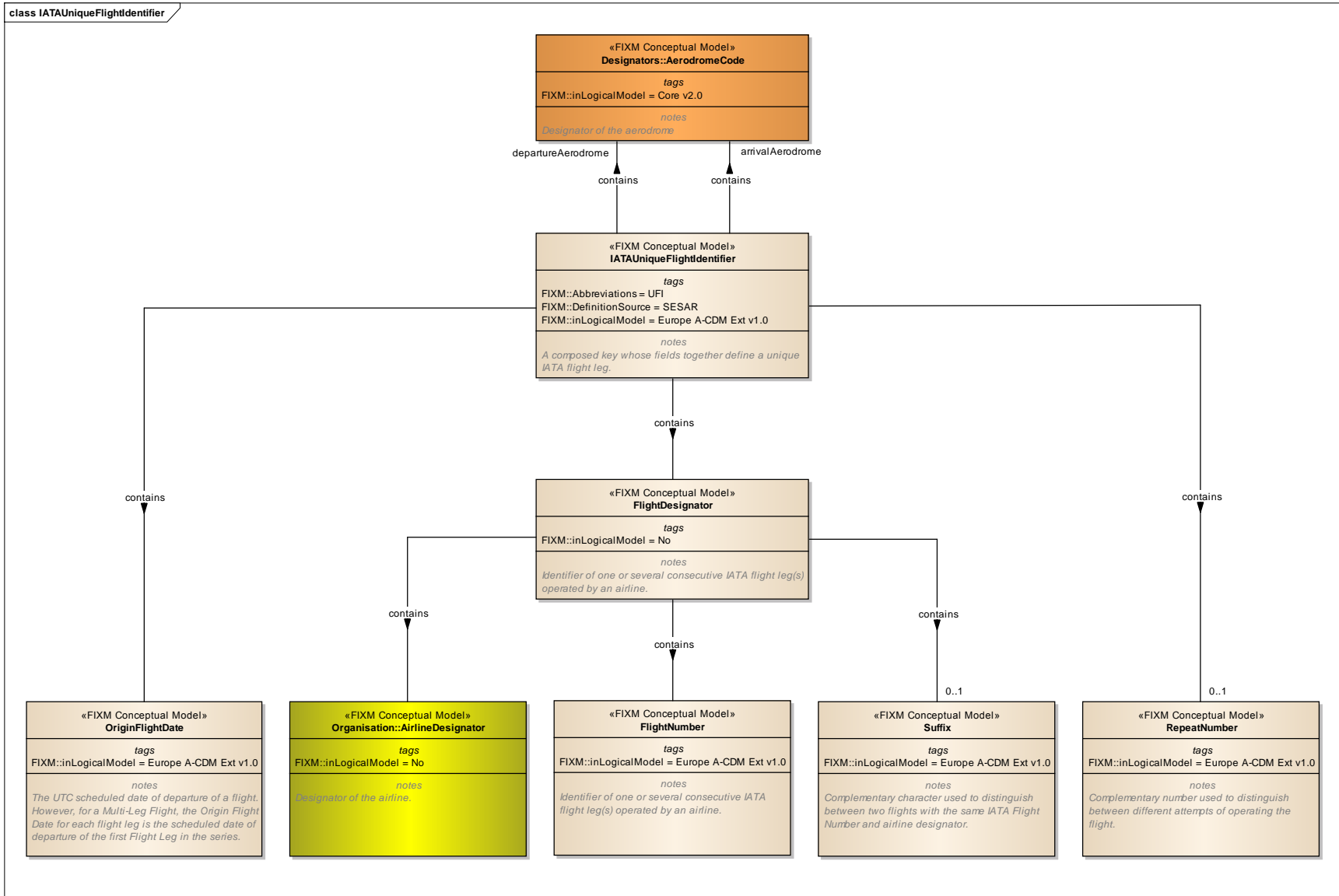
# Flight

## FlightIdentifier

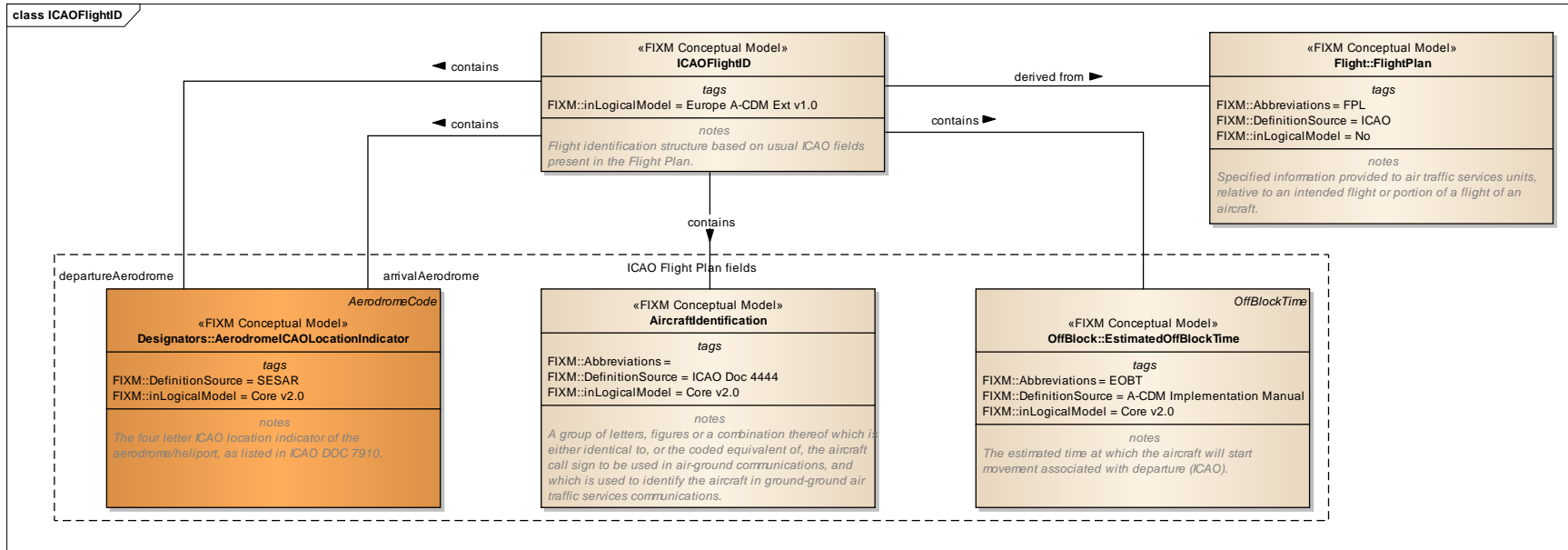
### Flight Identifiers



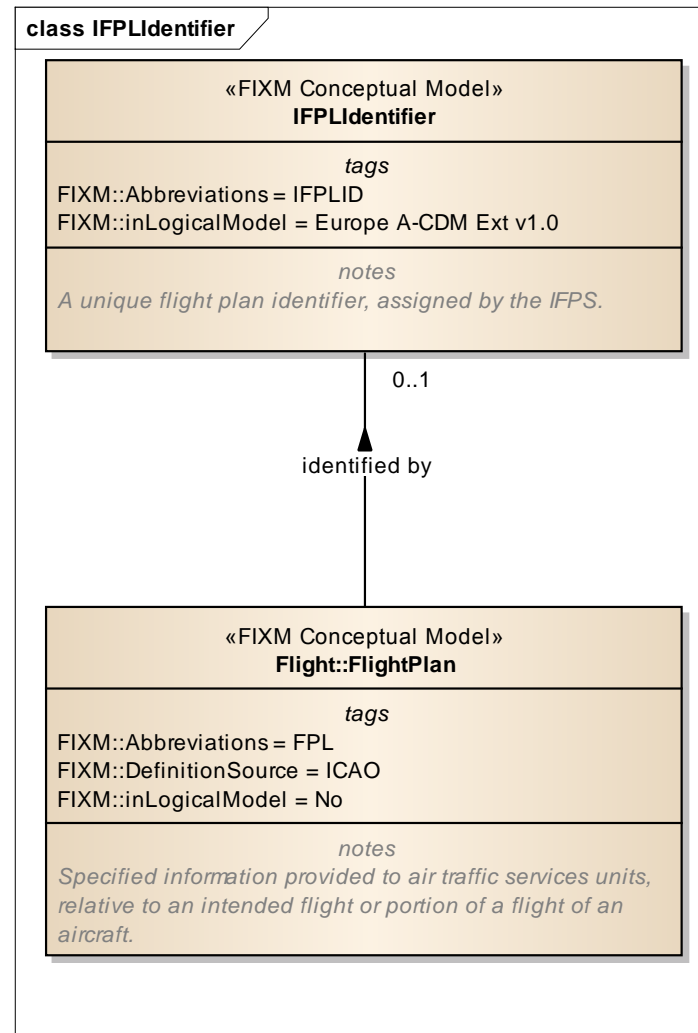
# IATAUniqueFlightIdentifier



# ICAOFlightID

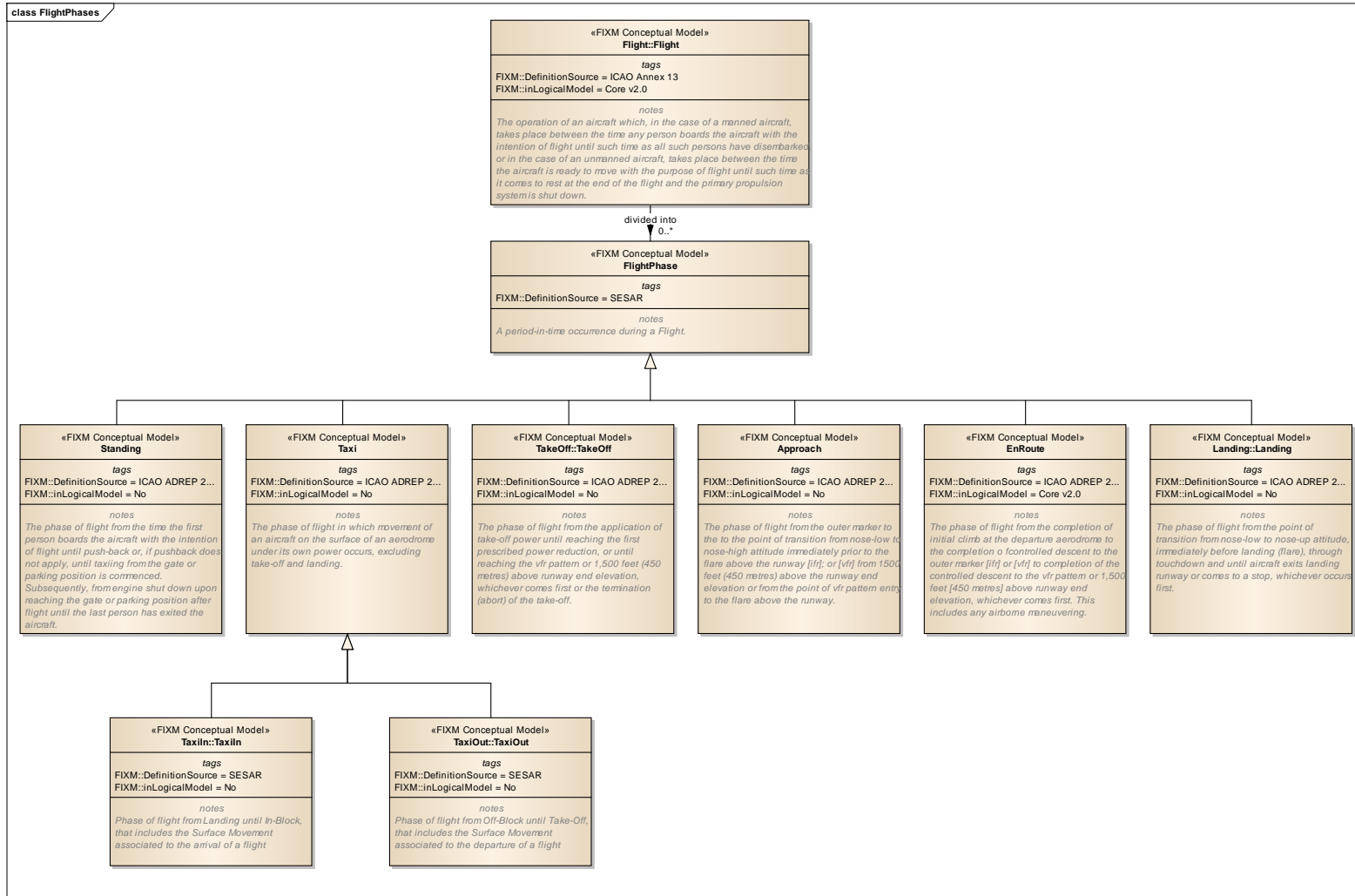


## IFPLIdentifier

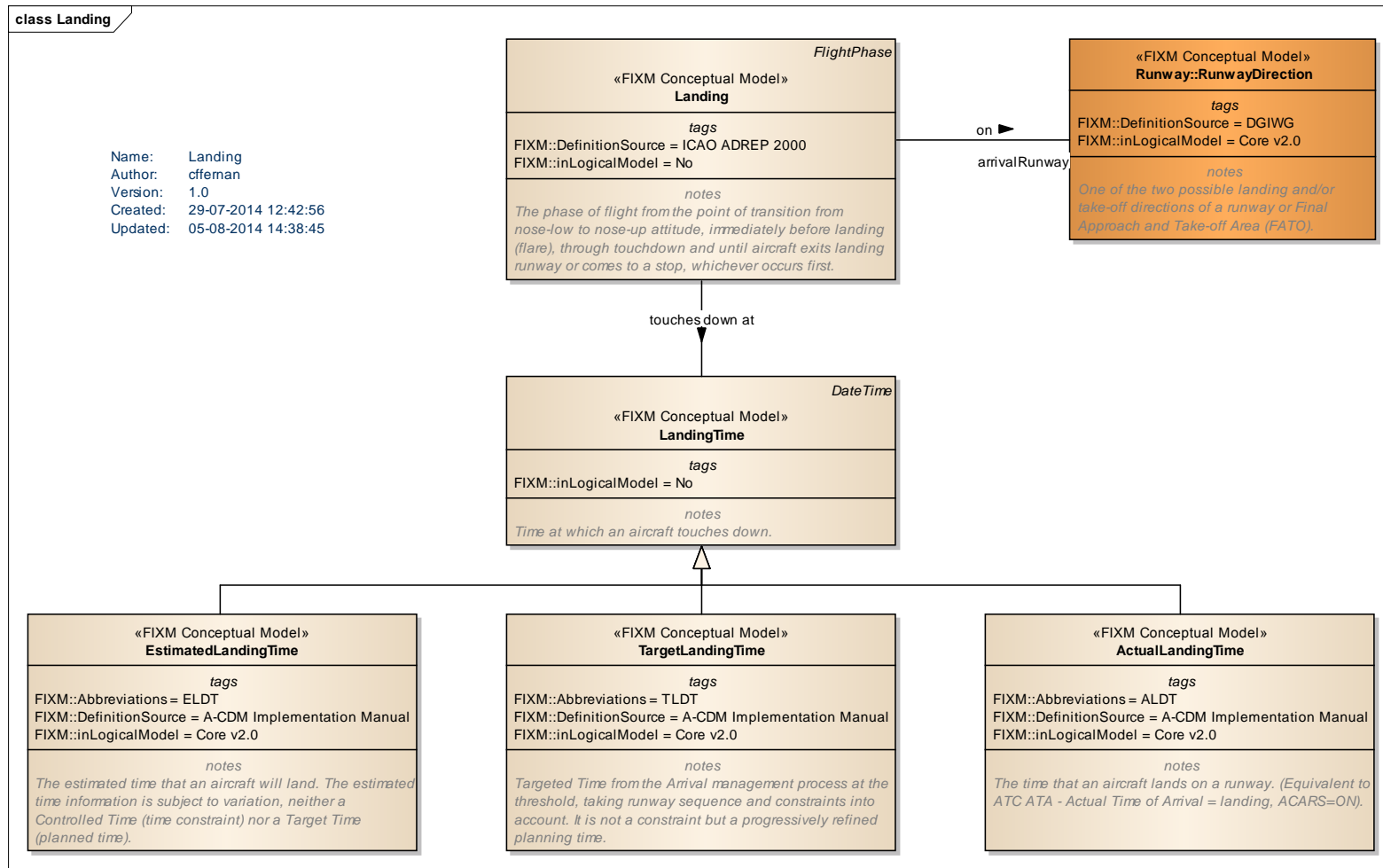


# FlightPhases

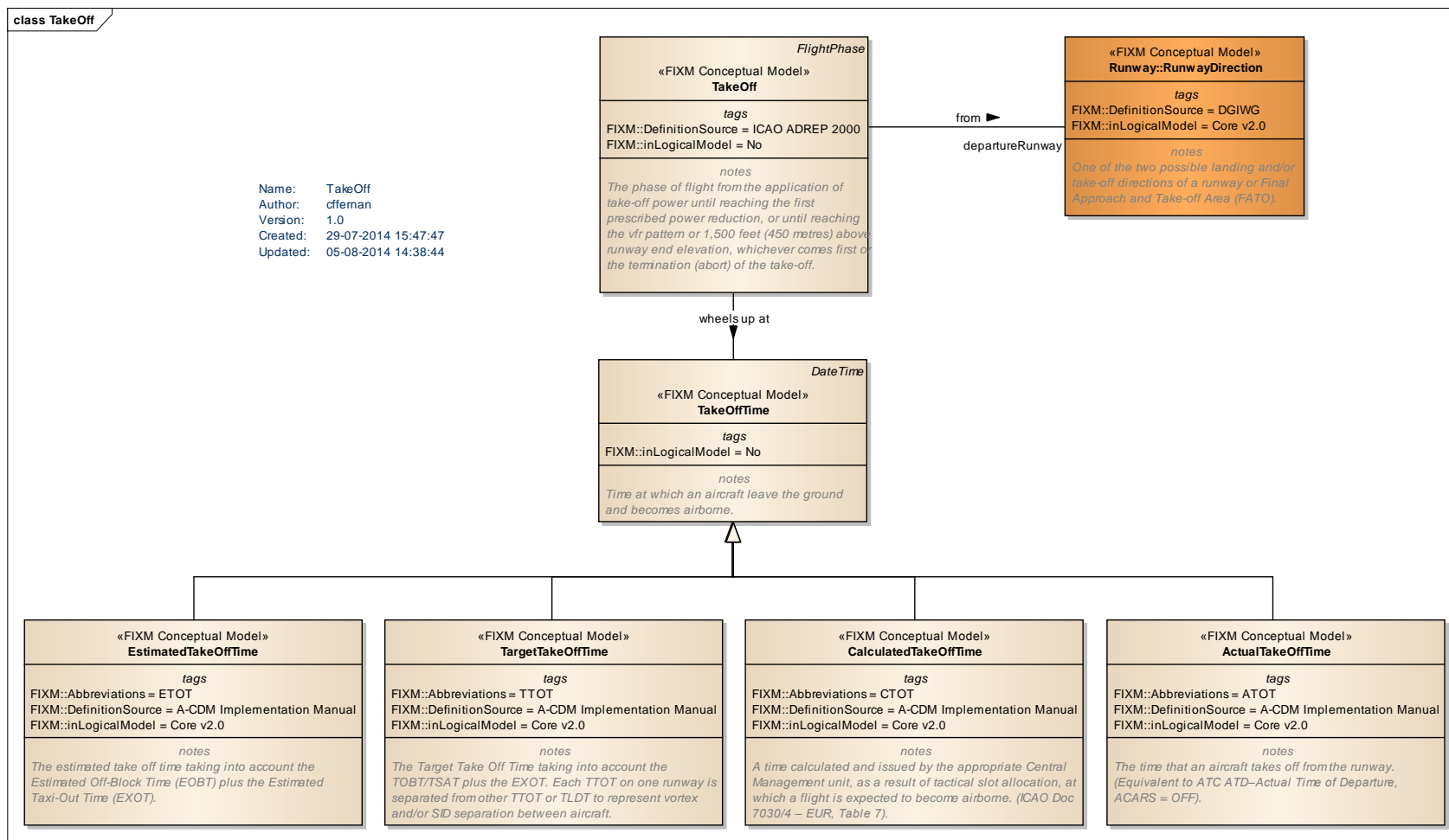
# FlightPhases



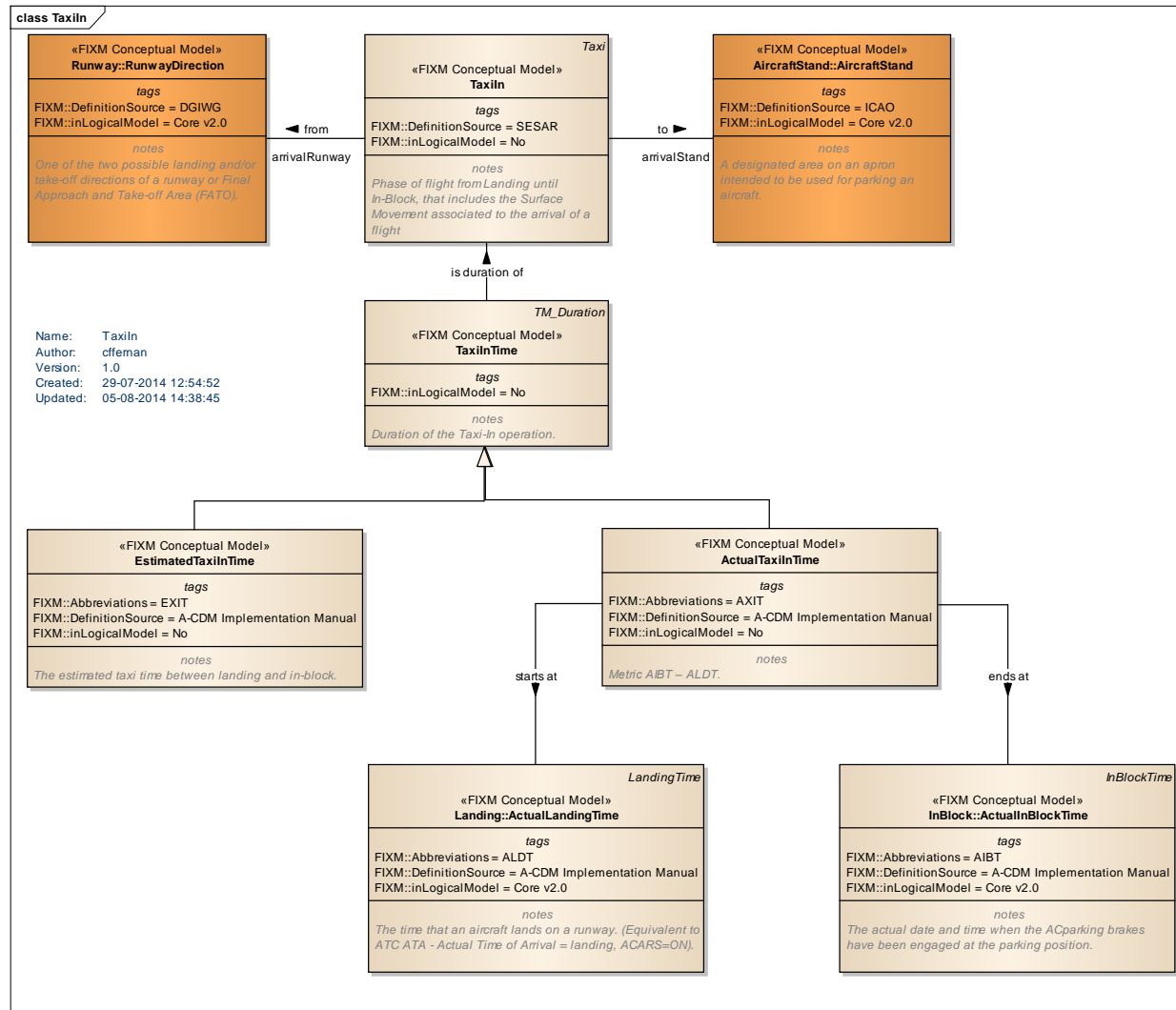
# Landing



# TakeOff

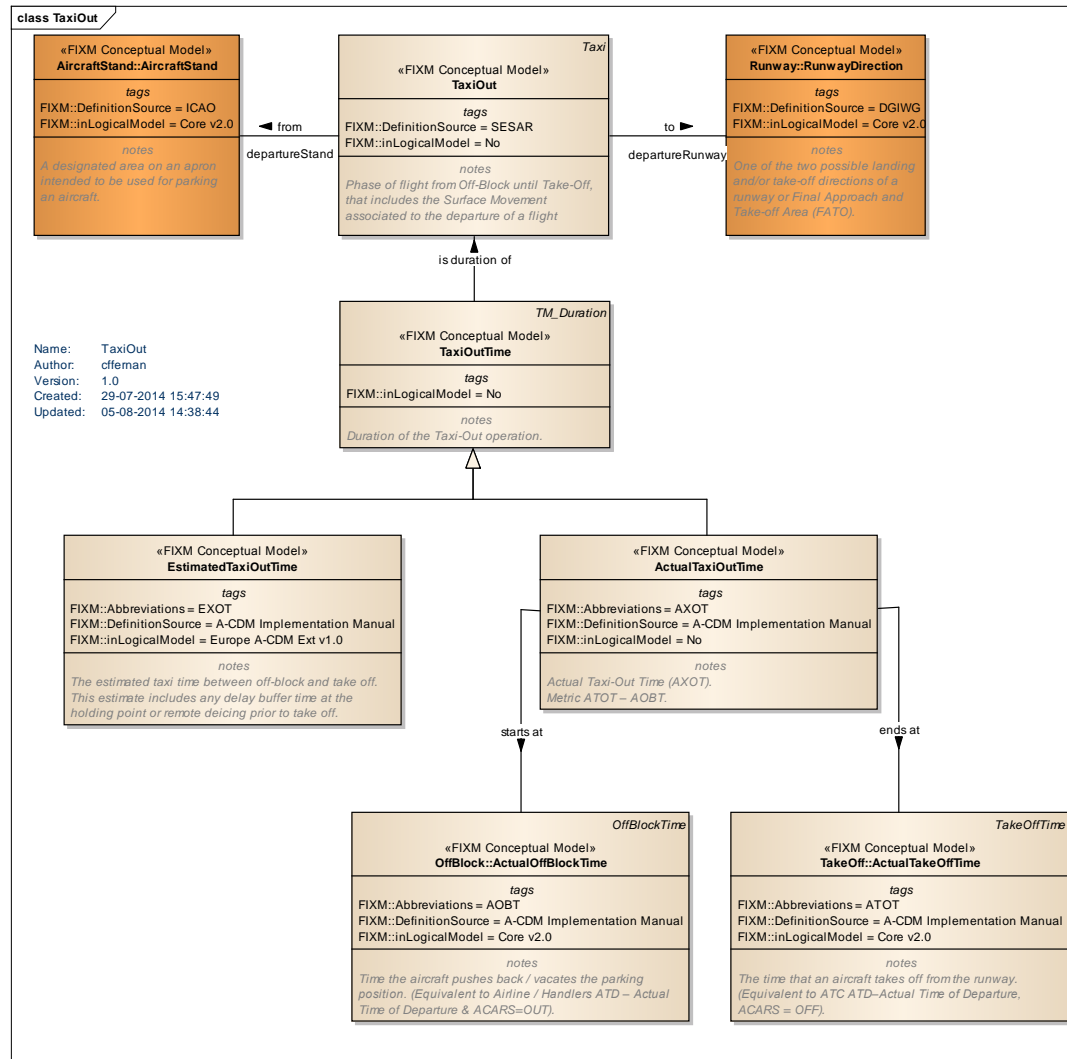


# TaxiIn





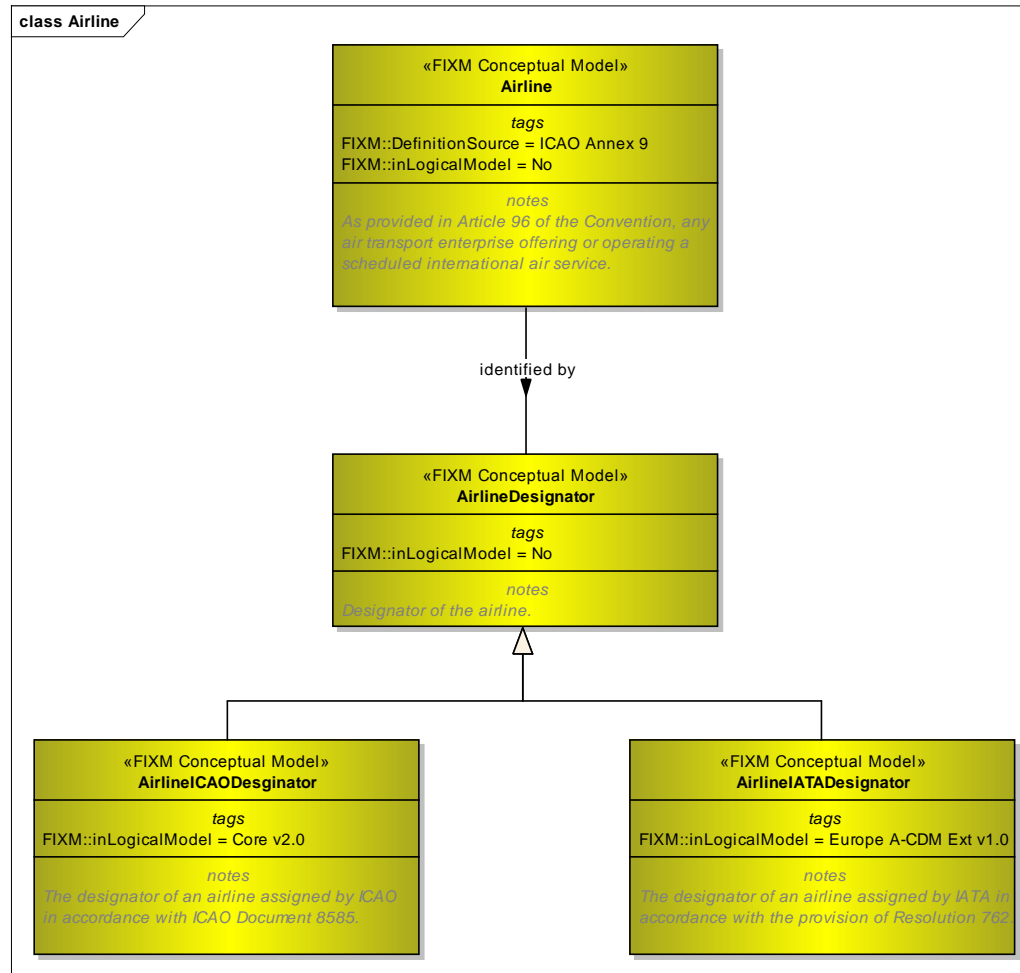
# TaxiOut



## StakeholderAndActivities

### Organisation

#### Airline



## References

- [1] [A-CDM Implementation Manual](#), EUROCONTROL, IATA and ACI
- [2] [FIXM Strategy v1.0](#), FIXM Change Control Board